



**Grosvenor Road  
Westcliff-on-Sea  
Essex  
SS0 8EN**

**Offers In Excess Of  
£1,060,000**

**bettermove**

# Grosvenor Road

## Westcliff-on-Sea

Bettermove are proud to present this 17 bedroom detached house in Westcliffe-on-Sea available with no forward chain.

The property benefits from double glazing, gas central heating throughout and has off street parking available for up to 6 cars.

The interior of this property comprises 17 bedrooms all with en-suites. The ground floor consists of 4 bedrooms, a kitchen and reception room. The first floor has a further 9 bedrooms and the second floor holds another 4 bedrooms. The exterior boasts a private rear garden, perfect for enjoying the summer months.

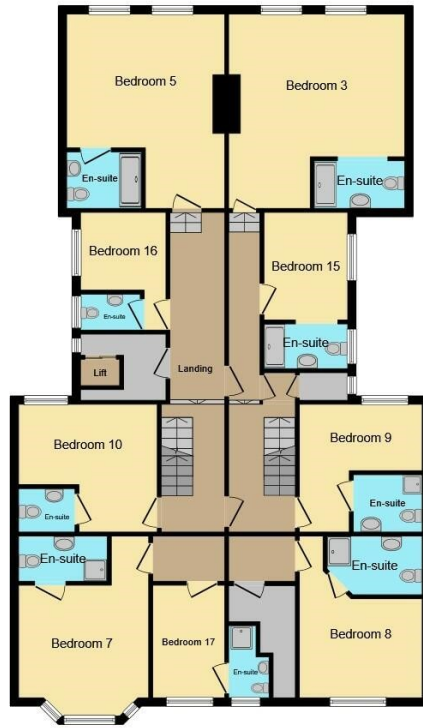
Located in the popular area of Westcliffe-on-Sea, the property is close to a range of amenities, including shops, supermarkets, restaurants and pubs. Excellent transport connections can be found from the A127, Southend Central train station and many local bus routes.

This exciting opportunity should not be missed! All enquiries can be made through Bettermove on 0330 004 0050.





**Ground Floor**



**First Floor**



**Second Floor**





20-22 Bridge End, Leeds, LS1 4DJ  
t: 0330 004 0050 e: hello@bettermove.co.uk  
[www.bettermove.co.uk](http://www.bettermove.co.uk)