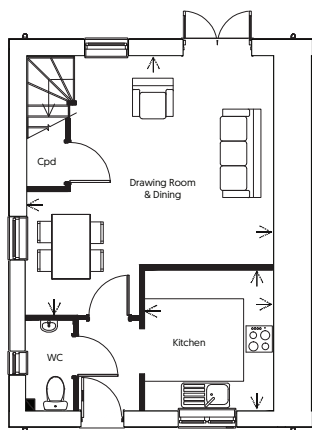


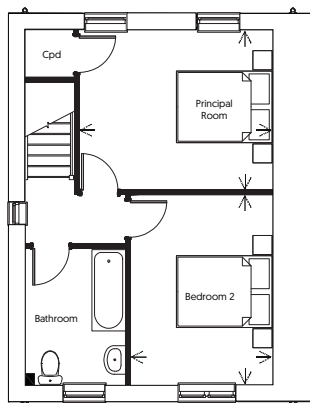
PLOTS 34 & 35

Tetbury

IG



GROUND FLOOR



FIRST FLOOR

DIMENSIONS

Drawing Room & Dining

16' 11" x 17' 10" 5.2m x 5.4m

Kitchen

9' 7" x 8' 9" 2.9m x 2.7m

Principal Room

10' 11" x 13' 3" 3.3m x 4.0m

Bedroom 2

13' 0" x 9' 9" 4.0m x 3.0m

29.09.2023 Please note plot 35 is a handed version of the floor plan shown above.

**Cotswold
Homes**

The information and images we provide are issued in good faith and designed to give a flavour of our development and house types. This may not reflect a specific plot and does not form part of any contract. Details such as final finishes, landscaping, PV panel locations, handing and windows will vary. Layouts including bathroom and kitchen layouts are indicative only and designs may change due to our process of continuous product development. Some house types include areas of reduced headroom. All dimensions are approximate only. Images used in marketing materials may be computer generated or photography of previous developments. Stone and Render colours can vary when viewing on screen/in print. Some areas may be subject to minor Planning changes. Our sales consultant will be delighted to discuss plot specific details prior to any formal reservation.

Call 07917 376854 or Visit www.cotswoldhomes.co.uk



**CONSUMER
CODE
FOR
HOME BUILDERS**
www.consumercode.co.uk

