

FOR SALE
£159,995



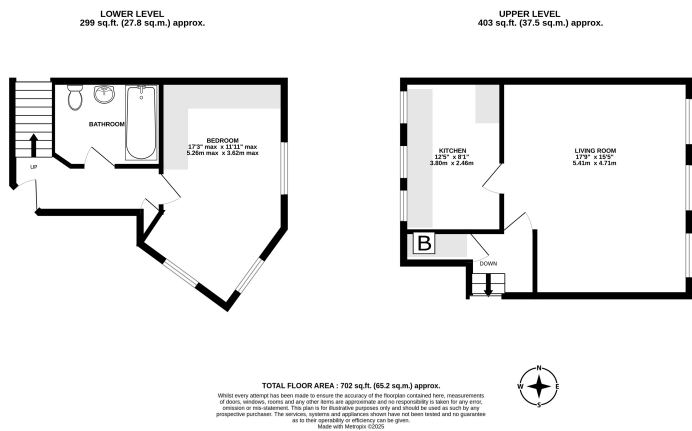
DESCRIPTION

Ideally located in the heart of the town centre, this well-presented one-bedroom split-level apartment occupies the top floor of a character building and offers light-filled, spacious accommodation throughout.

Accessed via a communal entrance hall with stairs rising to the first floor, the apartment opens into a welcoming entrance hall leading to the double bedroom with built in wardrobes and a modern bathroom. Upstairs, you'll find a bright and airy lounge/diner and a separate kitchen, both featuring multiple windows that flood the space with natural light.

Further benefits include gas fired central heating, parking area and easy access to local shops, restaurants, and transport links—making it an ideal home for first-time buyers, professionals, or investors. Early viewing is highly recommended.

FLOOR PLAN



- Large lounge/ diner
- Double bedroom with built in wardrobes
- Bathroom
- Spacious kitchen
- Town centre location
- Parking
- Leasehold
- Double glazing windows
- Gas fired central heating
- Approx £152.62 per month

ENERGY EFFICIENCY RATING

Energy Efficiency Rating		
	Current	Potential
Very energy efficient - lower running costs		
(92+) A		
(81-91) B		
(69-80) C	75	75
(55-68) D		
(39-54) E		
(21-38) F		
(1-20) G		
Not energy efficient - higher running costs		
England, Scotland & Wales		EU Directive 2002/91/EC

