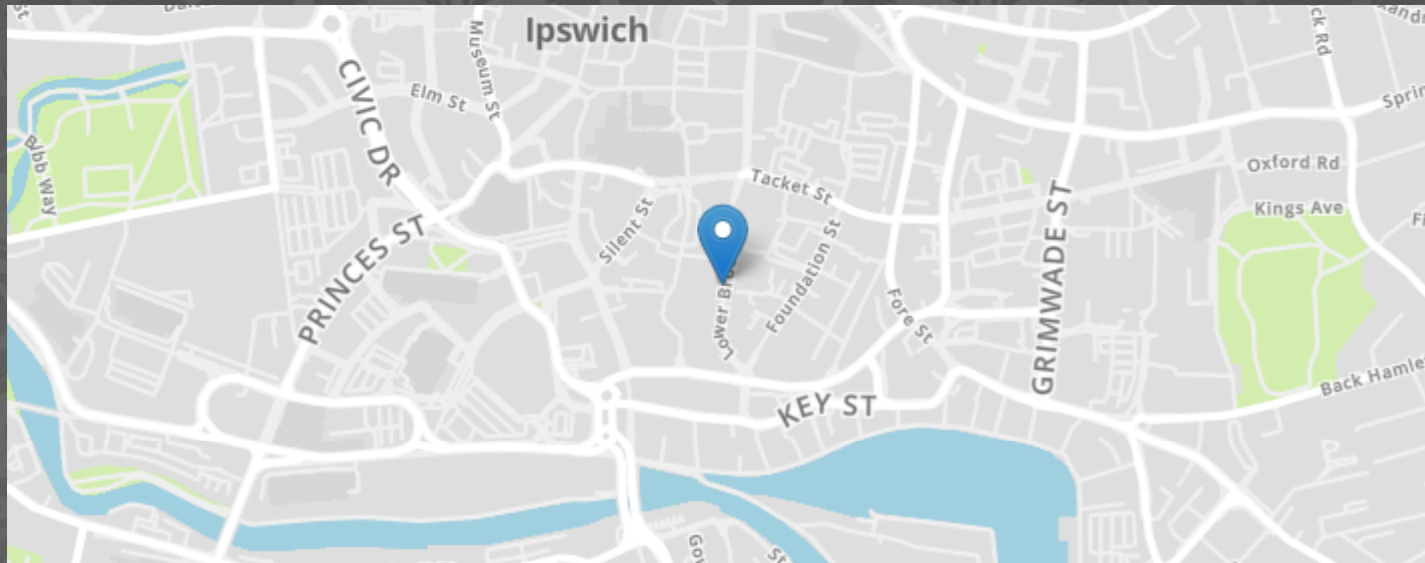


Lower Brook Street, Ipswich



- IDEALLY LOCATED
- EXCELLENT TRANSPORT LINKS WITH EASY ACCESS TO SURROUNDING TOWNS, VILLAGES AND THE COAST
- DEDICATED HOUSE MANAGER TO RUN THE DEVELOPMENT DAY -TO-DAY
- ARTS AND CFATS ROOM
- EXCLUSIVE GATED COMMUNITY
- ELEGANT COMMUNAL LOUNGE TO SOCIALISE IN WITH FRIENDS AND NEIGHBOURS
- EXPERTLY DESIGNED APARTMENTS WITH EASE OF LIVING IN MIND
- 10 YEAR NHBC GUARANTEE
- PARKING

MARKS & MANN

99-101 Penshurst Rd, Ipswich, Suffolk, IP3 8QB.

01473 396 296

contactipswich@marksandmann.co.uk

Website www.marksandmann.co.uk

MARKS & MANN



Lower Brook Street, Ipswich

Retirement Living properties are available to the over 60s

Discover Apartment 28 at McCarthy Stone's captivating Thomas Wolsey Place —a remarkable one-bedroom home. This apartment presents a generously proportioned, modern open-plan living area that seamlessly merges the living and dining spaces, flowing effortlessly into the well-appointed kitchen. The bedroom is a haven of comfort, boasting a luxurious walk-in wardrobe for your convenience. Adjacent to the bedroom lies a well-equipped shower room featuring an indulgent double-length shower. In the hallway, you'll find a convenient storage cupboard housing a washer dryer, enhancing the practicality of this exceptional apartment.

£249,950

Lower Brook Street, Ipswich

Entrance Hall

Built in cupboard.

Living Room

4.177m x 6.20m (13' 8" x 20' 4") Two double glazed panel's to rear with that opens onto a charming Juliette balcony. Spacious living rooms are both light and neutral décor, making it is easy to add your own personal touches to your living area.

Kitchen

2.200m x 2.400m (7' 3" x 7' 11") Double glazed window to rear, McCarthy Stone provide a range of quality appliances, including waist height oven, ceramic hob and integral fridge/freezer. Everything is laid out to make cooking and cleaning as effortless as possible.

Shower Room

2.220m x 2.051m (7' 3" x 6' 9") Well-equipped shower room featuring an indulgent double-length shower.

Bedroom

4.072m x 3.665m (13' 4" x 12' 0") Luxury and comfort are at the core of McCarthy Stone bedrooms. The bedroom provides generous storage with either a walk-in wardrobe or fitted wardrobe to the main bedroom.

Landscaped gardens

Stylish communal areas and outdoor spaces

Agent Notes

Camera entry system

House Manager

24/7 call system

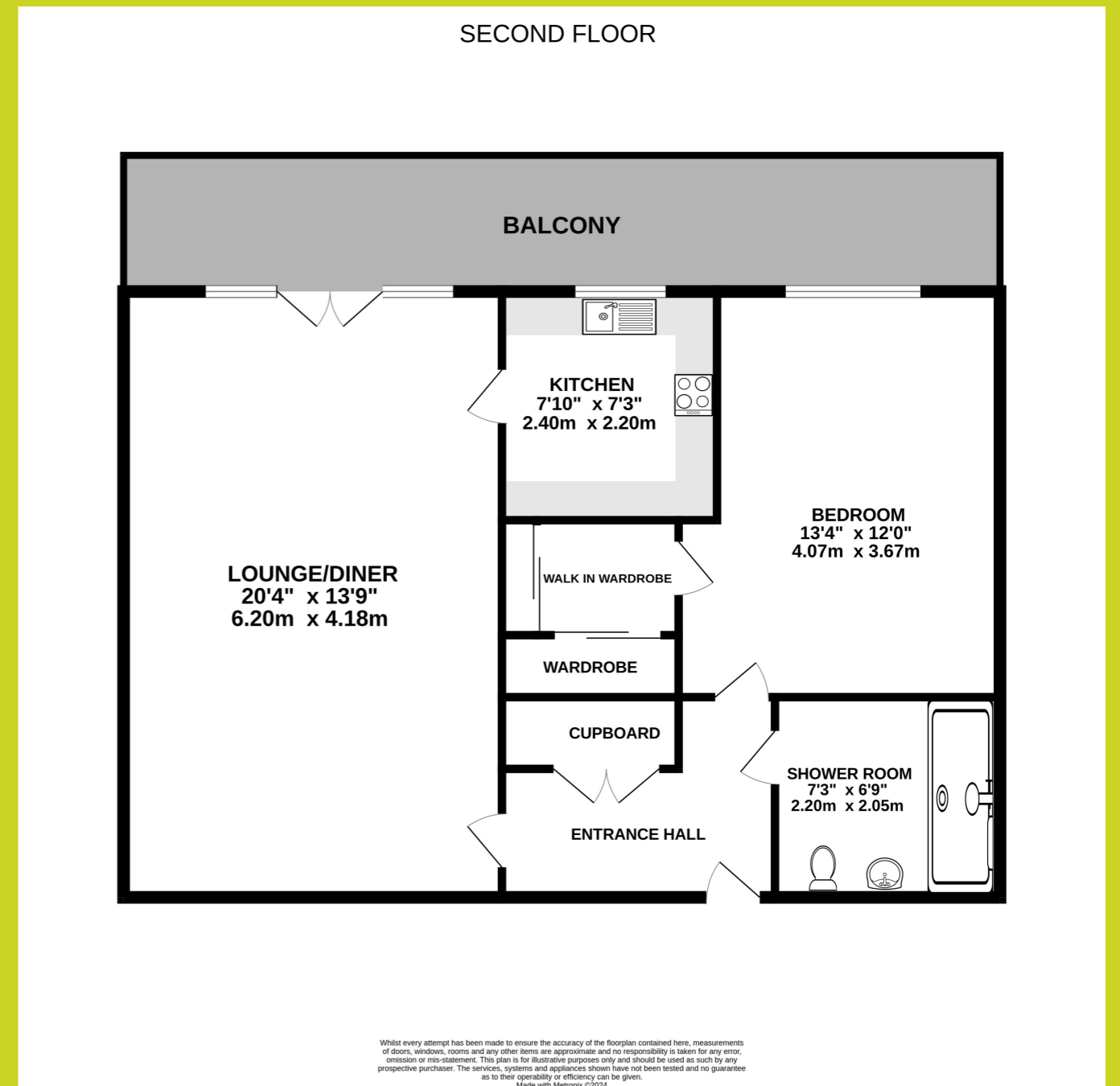
Guest suite

Wheelchair access

Second floor

Service and charges £291.54pm

Lower Brook Street, Ipswich



The above floor plans are not to scale and are shown for indication purposes only.

