



ST. JOHN'S ROAD, EARLSWOOD, SURREY RH1

HOUND & PORTER
FIND A HOUSE . MAKE IT HOME

ST. JOHN'S ROAD, EARLSWOOD, SURREY RH1



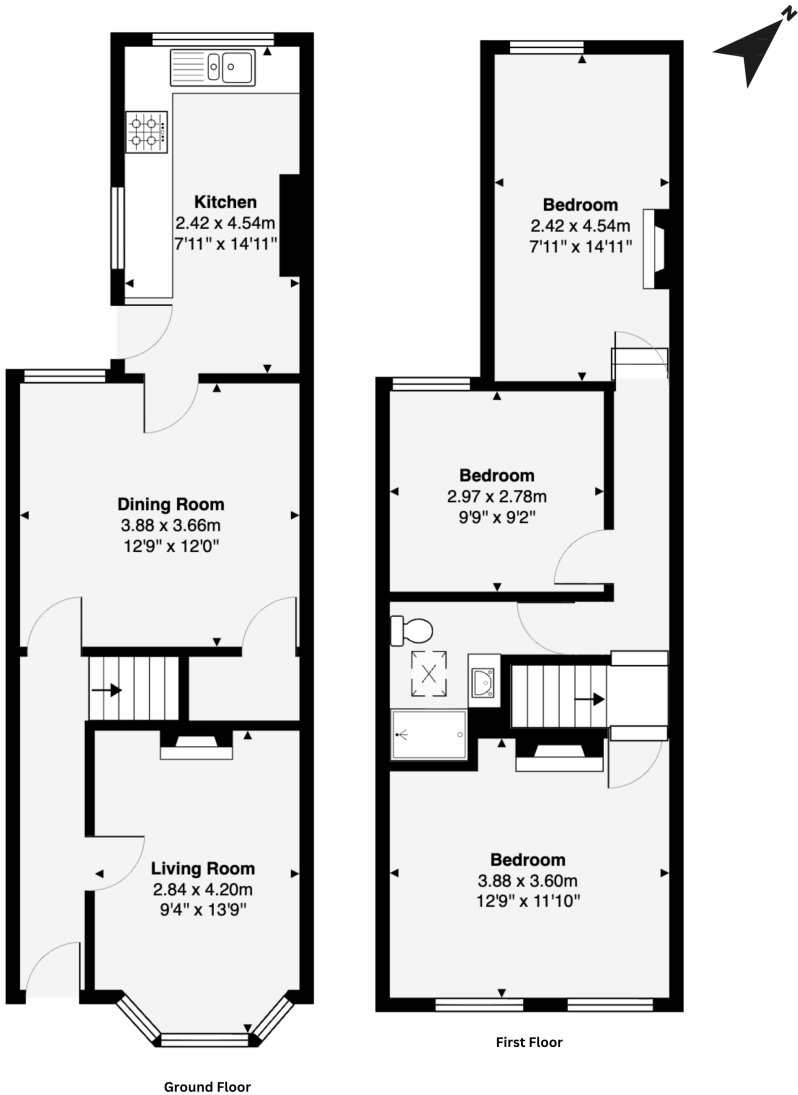
- Charming 3 bedroom Victorian home
- Gorgeous lounge with bay window
- Central dining room, with understair storage
- Light and bright kitchen to rear
- Stunning master bedroom with feature fireplace
- Two further bedrooms
- Recently renovated shower room with skylight
- Pretty cottage garden with rear access

ST. JOHN'S ROAD, EARLSWOOD, SURREY RH1



St Johns Road, RH1

Total Area: 979 sqft / 91 m2



We, at Hound and Porter, are excited to be able to share with you this charming Victorian cottage in the heart of Earlswood. From the moment you walk through the front door, it is clear to see the love and attention that has gone into creating a beautiful home at the same time as retaining many original features.

The cosy lounge, with bay window to the front, complete with plantation shutters, is just the perfect place to relax and wind down. The central dining room, with wooden floorboards, provides a wonderful space to come together at meal times at the end of the day or entertain friends and family.

The light and bright kitchen overlooks the pretty cottage garden, Unlike most terraced homes, here you have rear access - a true bonus!

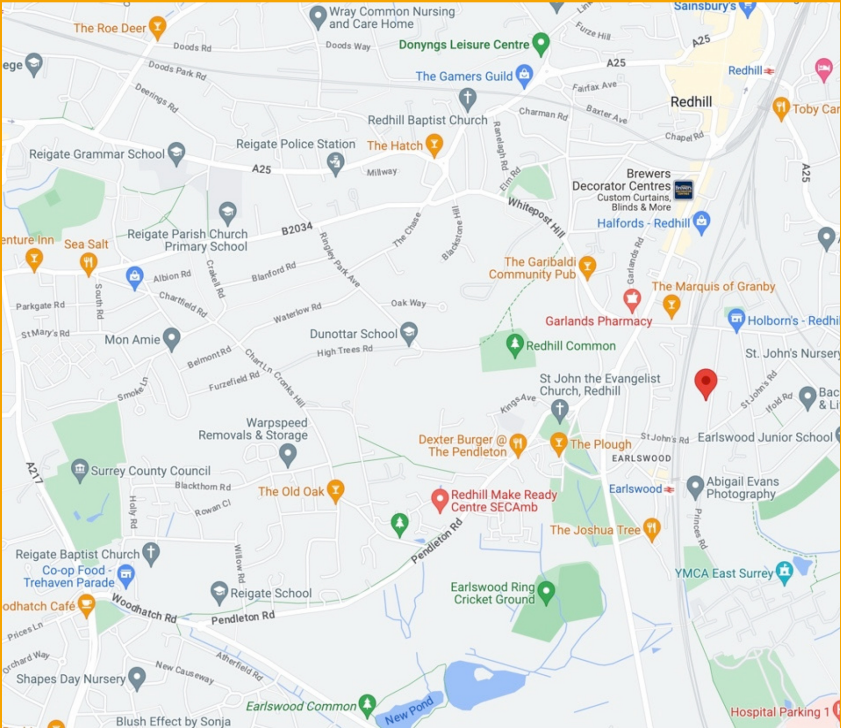
Head on up where you have three great sized bedrooms. The master spans the whole width of the house, with two impressive windows and a feature fireplace.

The recently renovated shower room is the piece-de-resistance here. Showcasing an enviable range of both characterful and modern features. Complete with remote control skylight!

Disclaimer: This floor plan has been produced by Lock and Key Media. All measurements are approximate and no responsibility is taken for any errors. For illustration purposes only.



ST. JOHN'S ROAD, EARLSWOOD, SURREY RH1



LOCATION

This lovely home is set within the village of Earlswood, just outside Redhill, with its excellent train links to London. Tiddly Winks Nursery is just down the road, and Holborns convenience store is close by on Hoooley Lane. If you love walking, then Earlswood Lakes is a short walk away and there are plenty of outdoor facilities locally. Earlswood Infant School is just around the corner. A short drive away is the market town of Reigate with an array of boutique shops, cafés and restaurants, as well as a cinema and Priory Park with its central children's play area and café.

TRANSPORT

Within easy reach of the A217, M23, M25 and Gatwick Airport, with a bus service providing access to Reigate, Redhill, Hatfield, Crawley, Horley and beyond.

DISTANCE TO STATIONS FROM PROPERTY BY ROAD
0.4 miles to Earlswood Station
1.3 miles to Redhill Station

DID YOU LIKE WHAT YOU'VE JUST SEEN?

Get in touch. We are more than happy to arrange a viewing, assist you with the complicated paperwork and find you the best local businesses to help during and after your move. We look forward to hearing from you.

58 Castle Walk
Reigate, Surrey
RH2 9PX

01737 317880
hello@houndandporter.co.uk