

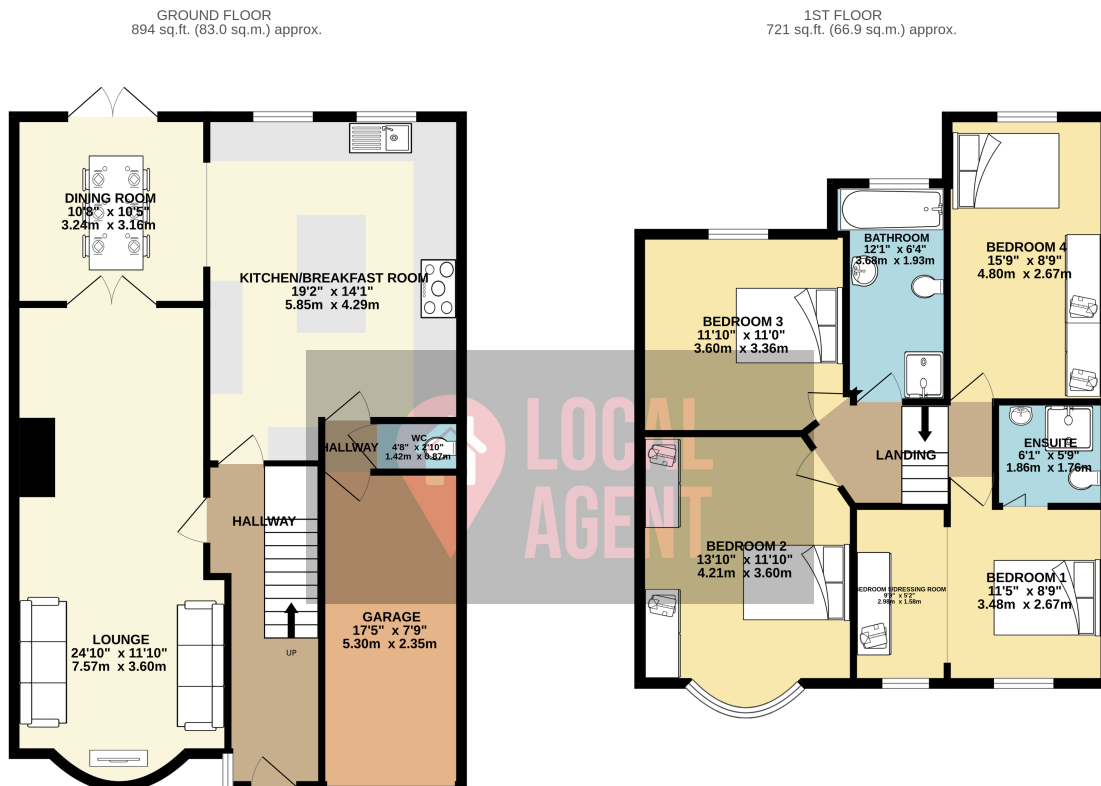
80 Wren Road, Sidcup, Kent, DA14 4NF
£775,000 Freehold

Description

New to the market, this beautifully extended four/five bedroom semi detached family home offers an excellent modern kitchen breakfast room. There is separate diner room with double doors leading to the spacious through lounge. All the rooms are excellent sizes. The garden has a raised patio which is ideal for relaxing and BBQs and the garden is mainly laid to lawn with flowers and mature shrubs in established flower beds. The front driveway can hold several vehicles, and a large integral garage. The vendor has found a property with no forward chain so a quick transaction is possible. Use our online diary to request your viewing.

Situated in a sought after road this extended home has the fifth bedroom as a dressing room to the main bedroom and could be easily converted back if required. The home is ideally positioned for access to some of the best schools in the borough with Chislehurst & Sidcup Grammar and Birkbeck Primary with good Ofsted ratings within walking distance. Locally there is Sidcup Golf Club, the famous Danson Park with historic buildings and lake. Sidcup High Street is approximately 0.7 miles away with boutique shops and cafes and Bexley Village 1 mile away the prestigious Hall Place a fine Grade I listed country house built in 1537 a popular wedding and events destination. Locally there are many restaurants, retail shops and pubs, large supermarket, gyms and recreational grounds with Fooks Cray Meadows just a short walk away with 240 acres of woodlands and fields with the river Cray flowing through. The property also benefits from Albany Park Station approximately 0.7 miles away with a parade of local amenities. Sidcup Station is approximately 0.9 mile away. The location also benefits from easy access to the A2 and A20 which make this location ideal for the London commuter.

Connected Interest: We would like to inform you the vendor has a connected interest with Local Agent Group; whether they are employed, a contractor, family member or providing services to us.



TOTAL FLOOR AREA: 1614 sq.ft. (150.0 sq.m.) approx.

Whilst every attempt has been made to ensure the accuracy of the floorplan contained here, measurements of doors, windows, rooms and any other items are approximate and no responsibility is taken for any error.