



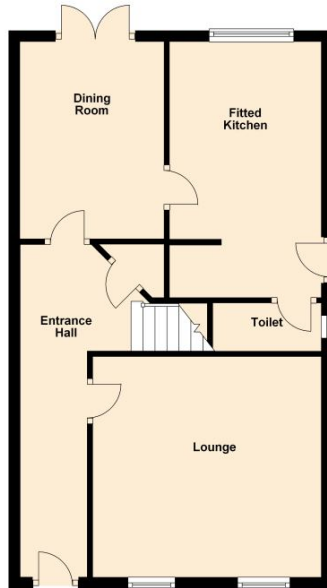
8 Bishops Gate, Lytham St Annes, Lancashire, FY8 4FR
£925 pcm Not Applicable

Energy Efficiency Rating		Current	Potential	Environmental Impact (CO ₂) Rating		Current	Potential
Most energy efficient - lower running costs				Most environmentally friendly - lower CO ₂ emissions			
102-110	A			102-108	A		
83-101	B			83-99	B		
69-81	C			69-83	C		
55-68	D			55-68	D		
39-54	E			39-54	E		
21-38	F			21-38	F		
1-20	G			1-20	G		
Not energy efficient - higher running costs				Not environmentally friendly - higher CO ₂ emissions			
England, Scotland & Wales		74	80	England, Scotland & Wales		72	78

Description

Unfurnished Semi Detached House on the popular Cypress Point development. The accommodation comprises two receptions, a fitted kitchen, a ground floor wc, three bedrooms, an en-suite, and a family bathroom. There is a private rear garden, single detached garage and a driveway. Council Tax: Band D

Ground Floor
Approx. 48.5 sq. metres (521.9 sq. feet)



First Floor
Approx. 48.3 sq. metres (519.5 sq. feet)

