





An exceptional, two bedroom, fully renovated second floor apartment, located close to the village centre.

- Secure intercom Entrance
- Private Entrance Hall
- Open Plan Living Room
- Lounge & Dining Area
- Fitted Kitchen
- Two Bedrooms
- Bathroom

Description

A well presented and well proportioned two bedroom, fully furnished, second floor apartment, located close to the village centre. The property has the benefit of gas central heating and PVCu double glazed windows and is offered on an unfurnished basis, however some kitchen white goods are available. The accommodation comprises: Secure intercom controlled entrance , private entrance hall with three built-in cupboards, open plan living room with lounge and dining areas, fitted kitchen, two bedrooms and bathroom. Outside there is ample parking and there are communal gardens, which are looked after by the management company. Immediately available.



Location
REDUCED

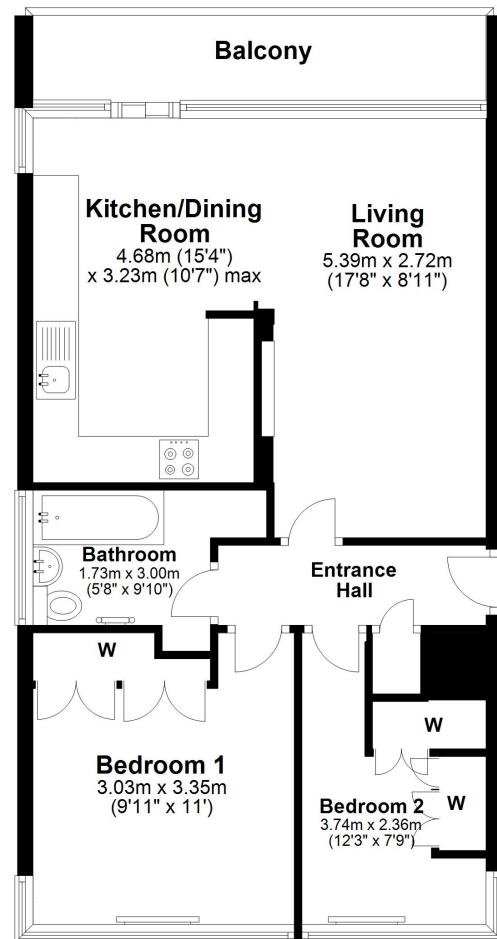
Tenure
using HIP from previous purchase

EPC Rating:



Second Floor

Approx. 60.2 sq. metres (647.8 sq. feet)



Total area: approx. 60.2 sq. metres (647.8 sq. feet)



Williams Estates is the trading name of Williams Estates (Ltd). Registered address 33, The Green, Hartford, Northwich, Cheshire, CW8 1QA.

Reg number 07682683. Director Andrew P Williams