



# Westbury Farm Close

Offley, Hitchin,  
Hertfordshire, SG5 3FL  
£625,000

COUNTRY PROPERTIES  
PART OF HUNTERS

www.country-properties.co.uk

A superb four bedroom semi-detached barn style home located in the much sought after village of Offley.

This fine family home is presented in great order throughout and offers modern, well balanced and versatile accommodation spaciouly arranged over two floors. The ground floor features a delightful dual aspect living room with log burner, separate dining room which opens into a fitted kitchen and a separate study/playroom. Upstairs are four bedrooms and the family bathroom, with the principle enjoying its own en-suite and fitted wardrobes.

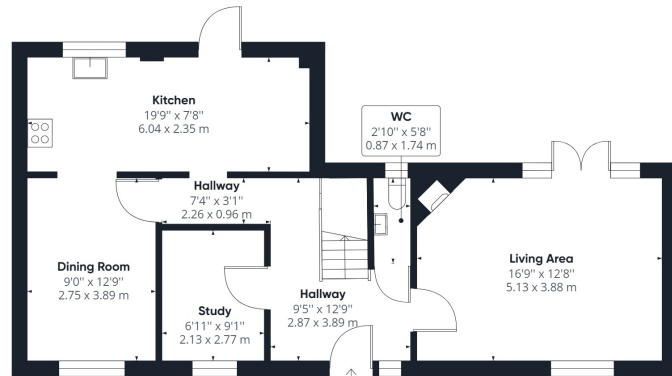
To the rear of the property is a private and enclosed rear garden with gate opening up to the double garage and off road parking.

Offley Village is a sought-after village in rolling countryside. It has a primary school, general store, hairdressers, several public houses/restaurants, and a bus service. There is easy access to A505, A1(M), M1 and to mainline stations at Hitchin and Luton.

- Stunning family home
- Four bedrooms
- Two bathrooms
- Three reception rooms
- Double garage
- Village location
- 3.4 miles, 7 mins to Hitchin town centre (as per Google maps)
- 4.4 miles, 11 mins drive to Hitchin train station (as per Google maps)



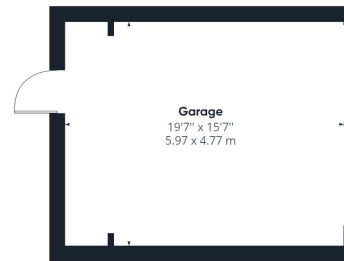




Floor 0 Building 1



Floor 1 Building 1



Floor 0 Building 2

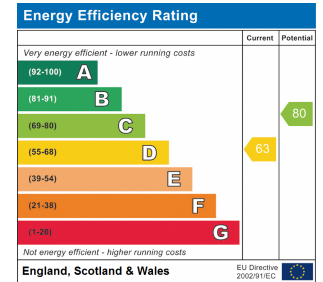
Approximate total area<sup>(1)</sup>

1595.75 ft<sup>2</sup>  
148.25 m<sup>2</sup>

(1) Excluding balconies and terraces

While every attempt has been made to ensure accuracy, all measurements are approximate, not to scale. This floor plan is for illustrative purposes only.

GIRAFFE360



All measurements are approximate and quoted in metric with imperial equivalents and for general guidance only and whilst every attempt has been made to ensure accuracy, they must not be relied on. The fixtures, fittings and appliances referred to have not been tested and therefore no guarantee can be given and that they are in working order. Internal photographs are reproduced for general information and it must not be inferred that any item shown is included with the property. For a free valuation, contact the numbers listed on the brochure.

Viewing by appointment only

Country Properties | 6, Brand Street | SG5 1HX

T: 01462 452951 | E: [hitchin@country-properties.co.uk](mailto:hitchin@country-properties.co.uk)

[www.country-properties.co.uk](http://www.country-properties.co.uk)

