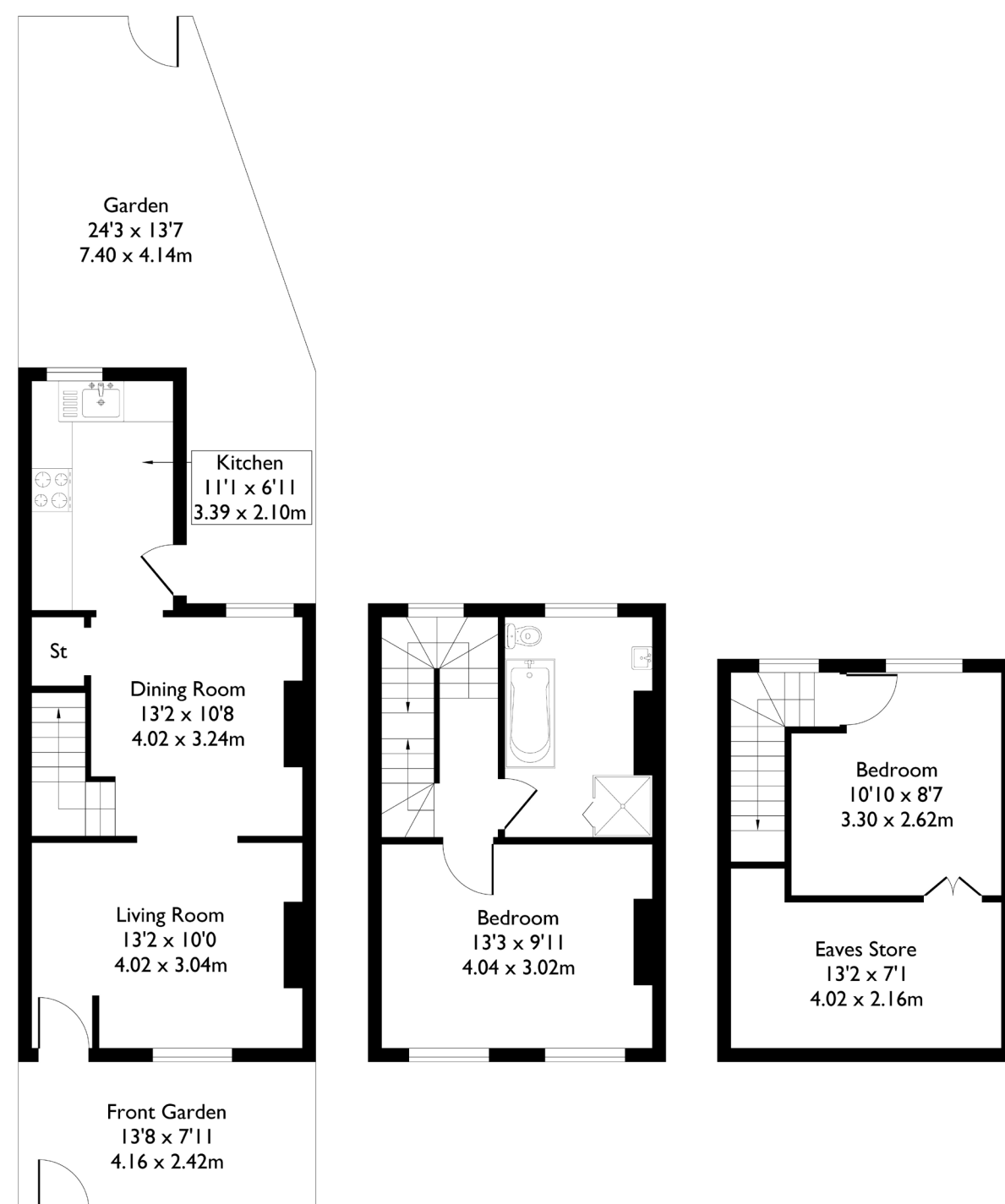


Felix Road, London, W13

Approximate Floor Area = 71.4 sq m / 769 sq ft



Ground Floor

First Floor

Second Floor



2 BEDROOM HOUSE

Felix Road, W13

£629,950

Tucked away in the heart of West Ealing, this charming two bedroom period home, built in the early 1900s, combines character features with a sense of privacy and space.

With a secluded garden and easy access to West Ealing Station (Elizabeth Line), it's perfectly positioned for young families — within walking distance of sought-after schools, local parks, and vibrant amenities.

FEATURES

- Two Bedrooms
- Three Piece Family Bathroom
- Two Reception Rooms
- West Ealing Station (Elizabeth Line)
- St John's Primary School
- Potential To Extend (STPP)
- EPC Rating D



2 BEDROOM HOUSE

Felix Road, W13

The welcoming front door opens into a bright and airy living room, where stripped wooden floorboards and a feature fireplace create a warm and inviting atmosphere.

Double doors lead through to the dining room, an ideal space for entertaining and family gatherings. The kitchen, arranged in a practical horseshoe layout, keeps all appliances within easy reach. A door to the right opens out to a sunny, private garden — perfect for outdoor dining or quiet relaxation. Upstairs, the first floor offers a generous double bedroom spanning the width of the house, alongside a large family bathroom.

A few steps lead up to the second floor, where you'll find the second bedroom, with ample storage. The property presents an excellent opportunity to create a wonderful family home in a highly desirable location.

EPC Rating D.

