



Stuart Road, London, W3 6DG

Cow & Co
LONDON



A stunning and rarely available 4 bedroom end of terrace semi detached period property. Situated on a quiet corner of a popular residential road and ideal for a growing family, this property is beautifully presented and comprises of a double reception room, a downstairs cloakroom/shower room, a large kitchen with an adjoining utility room. Further benefitting from four generous bedrooms, three bathrooms (one en-suite) and a mature south facing rear garden. This impressive property has space at the side of the house for storage and the potential for off street parking.

The property is within walking distance of good local primary schools including Derwentwater Primary.

Stuart Road is just off Churchfield Road with its independent shops and cafes. It is a short distance from Acton Central station and both the new Elizabeth line station (Acton Mainline) and Acton Town station are within half a mile of the property.



- Four bedroom semi detached house
- Three bathrooms (one ensuite)
- Downstairs shower room/wc
- Utility room
- Immaculately presented
- South facing garden
- Side and rear entrance
- Freehold

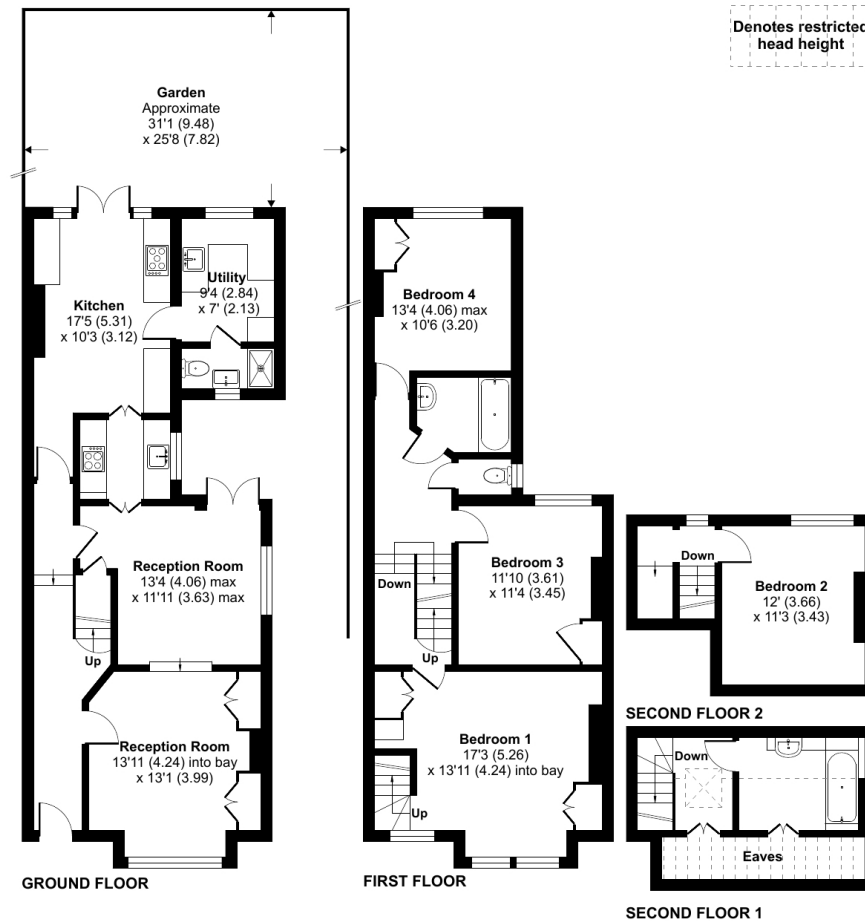
Stuart Road, London, W3

Approximate Area = 1660 sq ft / 154.2 sq m

Limited Use Area(s) = 109 sq ft / 10.1 sq m

Total = 1769 sq ft / 164.3 sq m

For identification only - Not to scale



Floor plan produced in accordance with RICS Property Measurement Standards incorporating International Property Measurement Standards (IPMS2 Residential). © nchecon 2024. Produced for Cow & Co Properties Ltd. REF: 1122333

Tel: 0208 065 0010
Email: thehub@cowandco-london.com
Web: cowandco-london.com

Agents note: All measurements are approximate and whilst every attempt has been made to ensure accuracy they are for general guidance only and must not be relied on. The fixture and fittings referred to have not been tested and therefore no guarantee can be given that they are in working order. Internal photographs are reproduced for general information and it must not be inferred that any item shown is included with the property.

Cow & Co

LONDON