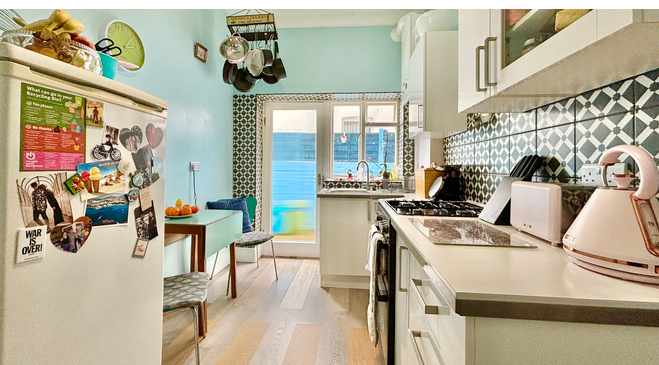




Flat 1, 53 Wilton Road, Bexhill-on-Sea, East
Sussex, TN40 1HX

£259,950

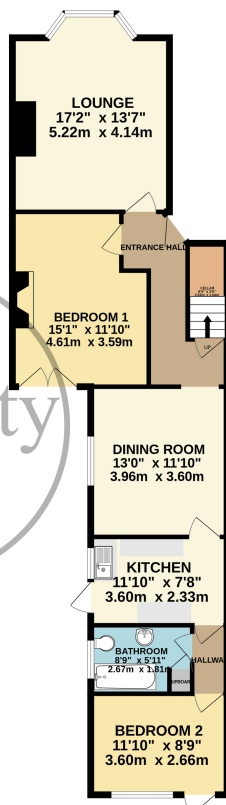


- Ground Floor Garden Flat For Sale
- Vast Westerly Aspect Lounge
- Separate Dining Room
- Modern Fitted Kitchen
- Two Spacious Double Bedrooms
- Family Bathroom
- Private Rear Garden.
- Period Features & Character
- Sought After Town Centre Location
- Share of Freehold
- Viewing Highly Recommended



BASEMENT
122 sq.ft. (11.2 sq.m.) approx.

GROUND FLOOR
886 sq.ft. (81.3 sq.m.) approx.



TOTAL FLOOR AREA : 1019 sq.ft. (94.6 sq.m.) approx.

Whilst every attempt has been made to ensure the accuracy of the floorplan contained here, measurements of doors, windows, rooms and any other items are approximate and no responsibility is taken for any error, omission or mis-statement. This plan is for illustrative purposes only and should be used as such by any prospective purchaser. The services, systems and appliances shown have not been tested and no guarantee as to their operability or efficiency can be given.
Made with Metropix 1/2024