



Keyworth Walk,
Eaton Park ST2 9PB

 **OneAgency**

01782 970222

hello@oneagencygroup.co.uk



£130,000

A stunning three bedroom town house in the popular location of Eaton Park. The property benefits from fantastic views to the front and a private rear garden. The property is immaculately presented throughout and is perfect for first time buyers!





Ground Floor

Hall

1.78m x 1.75m (5' 10" x 5' 9") Entered through a UPVC front door, radiator, storage cupboard and carpet flooring.

Lounge

4.62m x 4.58m (15' 2" x 15' 0") French doors to the rear, space for a fireplace, storage cupboard, radiator and carpet flooring.

Kitchen

2.64m x 1.87m (8' 8" x 6' 2") A range of wall and base units with worktops, sink basin with mixer tap, oven and gas hobs with hood over, space for a fridge, freezer, plumbing for a washing machine and dryer, double glazed window to the front elevation and laminate flooring.

First Floor

Bedroom One

3.77m x 2.71m (12' 4" x 8' 11") A double glazed window to the rear elevation, radiator and carpet flooring.

Bedroom Two

2.92m x 2.71m (9' 7" x 8' 11") A double glazed window to the front elevation, radiator and carpet flooring.

Bedroom Three

2.79m x 1.82m (9' 2" x 6' 0") A double glazed window to the rear elevation, radiator and carpet flooring.

Bathroom

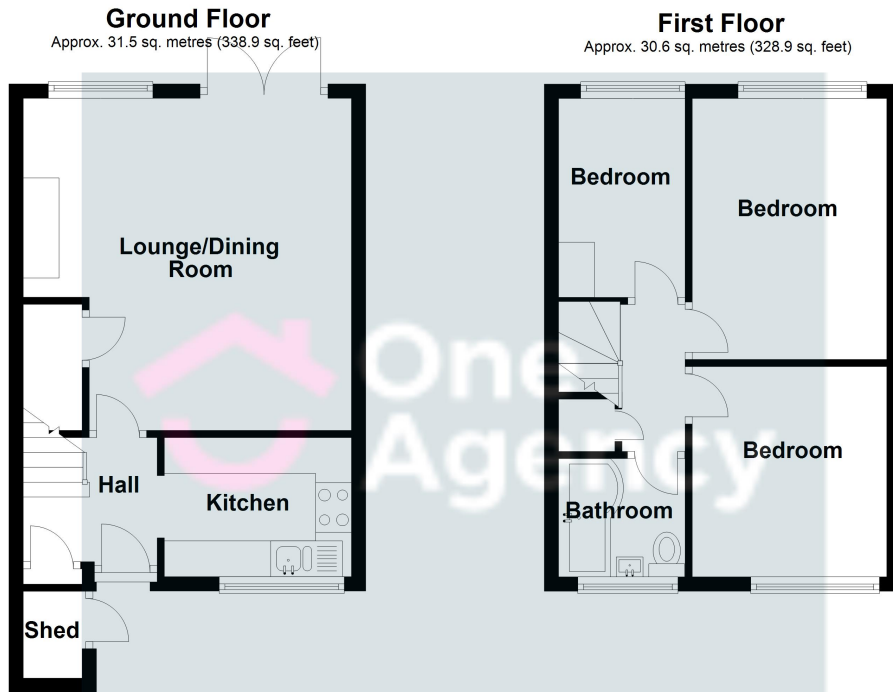
1.79m x 1.65m (5' 10" x 5' 5") A modern suite comprising of a bath with overhead rain fall shower, vanity hand wash basin, w/c, stylish grey radiator, double glazed window, tiled walls and flooring.

External

Front - A fore-courted front garden space with a paved footpath and rockery area, stunning views overlooking fields.

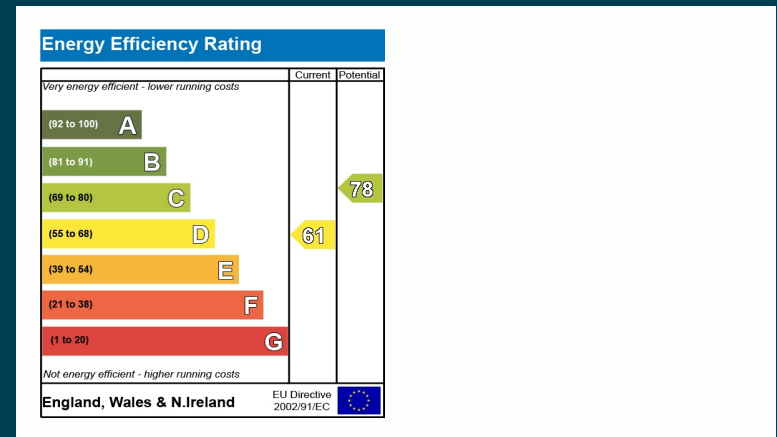
Rear - A paved area for seating, artificial turf and detached garage which has been converted to an extra living space with electric power, french doors overlooking the garden and gated access with parking to the rear.





Total area: approx. 62.0 sq. metres (667.8 sq. feet)

We accept no responsibility for any mistake or inaccuracy contained within the floorplan. The floorplan is provided as a guide only and should be taken as an illustration only. The measurements, contents and positioning are approximations only and provided as a guidance tool and not an exact replication of the property.
Plan produced using PlanUp.



OneAgency, 9 & 10 Ridge House Drive, Festival Park, Stoke-on-Trent, ST1 5SJ

01782 970222

hello@oneagencygroup.co.uk

Every attempt has been made to ensure accuracy, however, all measurements are approximate and for illustrative purposes only. **Not to scale.**

In accordance with The Consumer Protection from Unfair Trading Regulations 2008 the following particulars have been prepared in good faith and they are not intended to constitute part of an offer or contract. We have not carried out a structural survey and the services, appliances and specific fittings have not been tested. All photographs, measurements, floor plans and distances referred to are given as a guide only and should not be relied upon for the purchase of carpets or any other fixtures and fittings. Lease details, service charges and ground rent (where applicable) are given as a guide only and should be checked and confirmed by your Solicitor prior to exchange of contracts.