



GREGORY BROWN
RESIDENTIAL SALES & LETTINGS

£375,000 Freehold
UNDER OFFER



7 Commercial Road, Staines-upon-Thames, Surrey, TW18 2QJ

SPACIOUS TWO BEDROOM CHARACTER COTTAGE IDEALLY LOCATED FOR TOWN CENTRE & STATION. The property benefits from a spacious lounge, separate dining room, fitted kitchen, two double bedrooms (en-suite facilities), modern white bathroom suite and large secluded rear garden. Viewings Highly Recommended!!

Gregory Brown

127a, High Street, Staines-upon-Thames, TW18 4PD

01784 451458

staines@gregory-brown.co.uk

ROOM DESCRIPTIONS

Double glazed door leading to:

Entrance Hall

With door to:

Lounge

Front aspect UPVC double glazed Bay window, TV point, light and power points, double radiator, door to:



Dining Room

Rear aspect UPVC double glazed window, light and power points, double radiator, feature fireplace, cupboard housing meters, stairs to first floor.



Kitchen

Side aspect UPVC double glazed window, range of fitted units at eye and base level, roll edged worktops, sink drainer unit, built-in oven and hob with extractor over, space for washing machine and fridge. Side aspect door to Garden.



Bathroom

Rear aspect double glazed window, panel enclosed bath, low level W.C, pedestal wash hand basin, partly tiled walls, light point.



First Floor

Landing

Light point, doors to:

Bedroom 1

Front aspect UPVC double glazed window, light and power points, single radiator, feature fireplace.

Jack & Jill W.C.

Low level W.C, wash hand basin, single radiator, light point.

ROOM DESCRIPTIONS

Bedroom 2

Rear aspect UPVC double glazed window, light and power points, single radiator, access to loft space.



Outside

Front Garden

With pathway to front door.

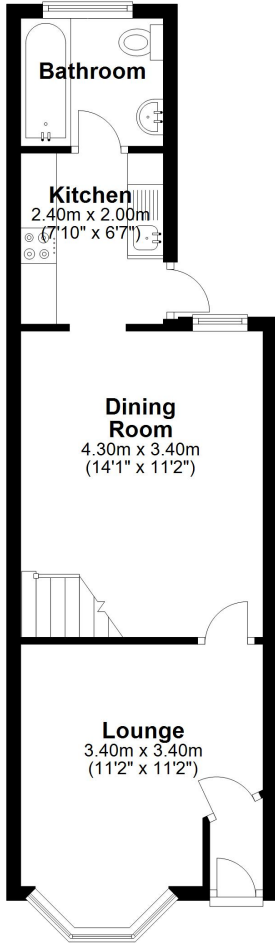
Rear Garden

Patio area nearest to house, mainly laid to lawn, hardstanding for timber shed, gated side access to front, outside tap.

FLOORPLAN

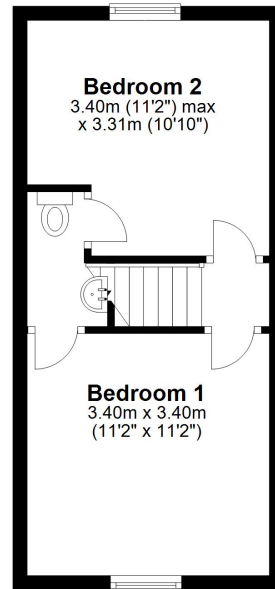
Ground Floor

Approx. 35.5 sq. metres (382.5 sq. feet)



First Floor

Approx. 26.5 sq. metres (285.5 sq. feet)



Total area: approx. 62.1 sq. metres (668.0 sq. feet)