



69 Cundy Road, London, E16 3DJ
£475,000 Freehold



Description

Guide Price £475,000 - £500,000

Welcome to this charming 3-bedroom terrace nestled in an unbeatable location - it's all about the location. The vendor has found their next property, so a quick transaction is viable as a completed chain above.

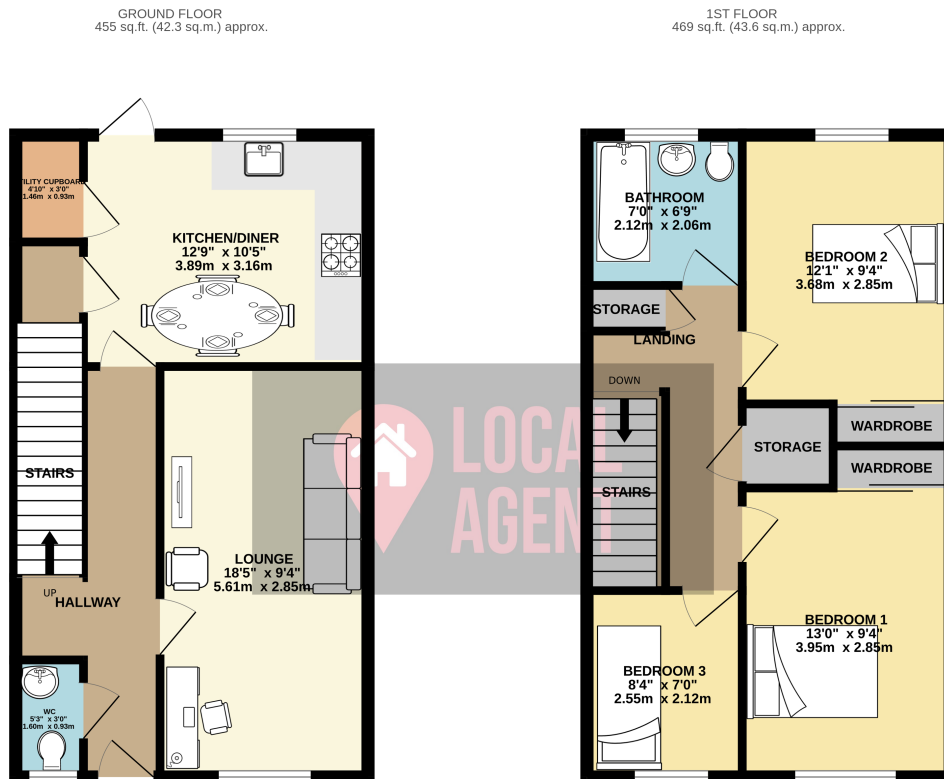
Use our online diary to request your viewing!

Whether you're looking for a comfortable family home or an investment property with easy access to transportation and schools, this 3-bedroom terrace has it all. Don't miss the opportunity to make it your own!

Inside, you'll discover two double bedroom and good sized third bedroom on the first floor, along with an modern upstairs bathroom. The bedrooms benefit from fitted wardrobes, providing ample storage space for your belongings. On the ground floor, the property offers an extra WC, to the front a separate living room that can be easily converted into a fourth bedroom, catering to your specific needs. To the rear a modern and decently sized kitchen/diner with utility cupboard. The modern roof over the generous patio extends the living space to outdoor living, creating the perfect area for relaxation or entertaining friends and family. The rear garden is beautifully landscaped and thoughtfully designed, providing a tranquil oasis for outdoor enjoyment.

Situated just short walk from the new Elizabeth line station in CUSTOM HOUSE and to the PRINCE REGENT DLR station, this property offers unparalleled convenience for commuters and families alike with excellent access to the city or London City or Heathrow Airports. This ideal location provides easy access to Canary Wharf, the City and is within the catchment area for St Joachim's RC (Good Ofsted Rating) and Rosetta Primary Schools (Outstanding Ofsted Report).

Nestled in a picturesque green cul-de-sac, you'll find Cundy Park right on your doorstep, offering a serene escape from city life. The house itself has undergone a complete refurbishment, ensuring that it is in excellent condition and ready for you to move in.



TOTAL FLOOR AREA: 925 sq.ft. (85.9 sq.m.) approx.

Whilst every attempt has been made to ensure the accuracy of the floorplan contained here, measurements of doors, windows, rooms and any other items are approximate and no responsibility is taken for any error.