



5 The Orchids, Etchinghill, Folkestone, Kent, CT18 8AR

EPC Rating = C

Guide Price £705,000





A truly delightful and extremely spacious executive style family home located on an exclusive development of just five houses built approximately twenty years ago tucked away at the end of a quiet cul de sac in the sought after village of Etchinghill situated between the beautiful seaside town of Hythe and the historic city of Canterbury. Accommodation comprises: Ground floor - Entrance hall with Karndean flooring. Double French doors leading to the large living room with access to sizable conservatory overlooking the well maintained and established gardens. There is a formal dining room, cloakroom. The study/TV room and the family kitchen/breakfast room again feature Karndean flooring. There is utility room next to the kitchen/breakfast room with back door to the gardens. First floor - Galleried landing with feature double length window allowing natural light to flood the entrance hall and landing. Main double aspect and generously sized bedroom with both an en-suite bathroom and dressing room. (The dressing room could easily be reinstated back to the fourth bedroom if needed). Two further bedrooms, family shower/bathroom. Outside: The property is accessed via a 5 barred gate to a spacious driveway for several cars and giving access to the detached double garage with a good sized eaves storage space. Outside tap. A side gate leads to the private and secluded gardens with patios and raised vegetable beds. EPC Rating = C

Guide Price £705,000

Tenure Freehold

Property Type Detached House

Receptions 3

Bedrooms 4

Bathrooms 2

Parking Driveway & double garage

Heating Gas

EPC Rating C

Council Tax Band G

Folkestone And Hythe District Council



Situation

The village of Etchinghill nestles in an Area of Outstanding Natural Beauty with easy access to the North Downs Way and other beautiful walks. It has a semi-rural feel with lush countryside all around, yet is under four miles from the coast. At the centre is a pub/restaurant and a short stroll will bring you to Etchinghill Golf Club. A further three miles from the coast are all within five miles. A number of clubs and societies make good use of the village hall and there are good bus links to Canterbury and Folkestone. Approximately a mile away is Lyminge village offering a Post Office & convenience shop, hairdressers, two Doctors surgeries, chemist and Primary School.

Just three miles away is the Cinque Port of Hythe which has a bustling centre brimming with independent shops, restaurants and coffee shops where you can sit back and watch the world go by. Set between the beaches and the town is the Royal Military Canal which runs to the historic town of Rye. Most of the popular supermarkets are nearby and Hythe itself offers Waitrose, Sainsbury's and Aldi. The M20 motorway and Eurotunnel are approximately two miles away.

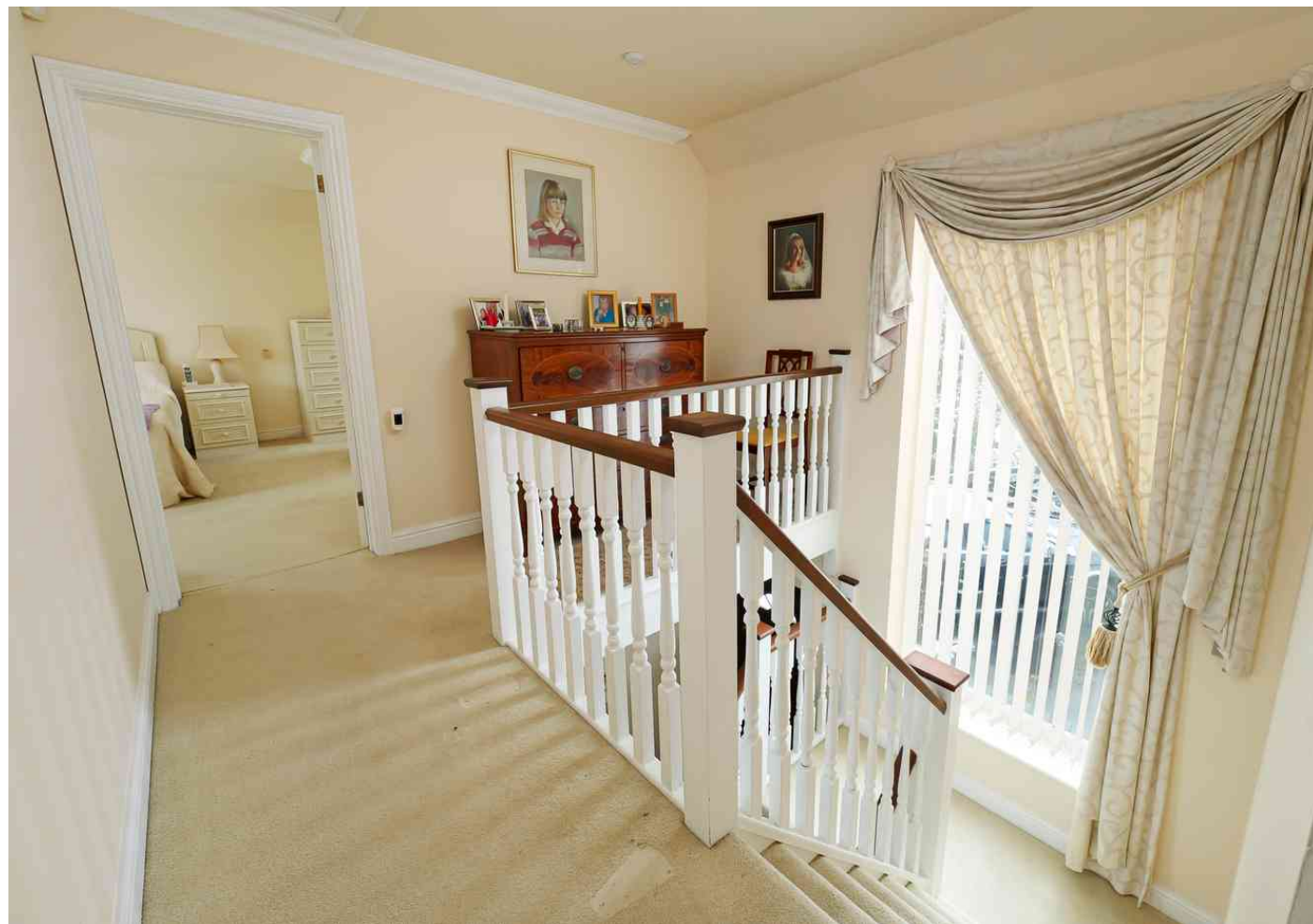
Ground floor

Entrance hall

Cloakroom/WC

Living room

18' 7" x 12' 3" (5.66m x 3.73m)





Conservatory
14' 0" x 13' 2" (4.27m x 4.01m)

Study/TV room
10' 5" x 7' 2" (3.17m x 2.18m)

Dining room
12' 0" x 9' 8" (3.66m x 2.95m)

Kitchen/breakfast room
12' 6" x 12' 0" (3.81m x 3.66m)

Utility room

First floor

Galleried landing

Main bedroom suite
18' 8" x 12' 4" (5.69m x 3.76m)

Dressing room/bedroom four
10' 4" x 8' 1" (3.15m x 2.46m)

En suite shower room/WC

Bedroom two
12' 2" x 11' 2" (3.71m x 3.40m)

Bedroom three
12' 1" x 8' 8" (3.68m x 2.64m)

Family bathroom/WC

Outside

Driveway and double Garage
Garage 17' 5" x 17' 4" (5.31m x 5.28m)

Garden

Attractive garden offering privacy and seclusion







Approximate Gross Internal Area (Including Low Ceiling) = 163 sq m / 1755 sq ft
 Garage = 28 sq m / 302 sq ft

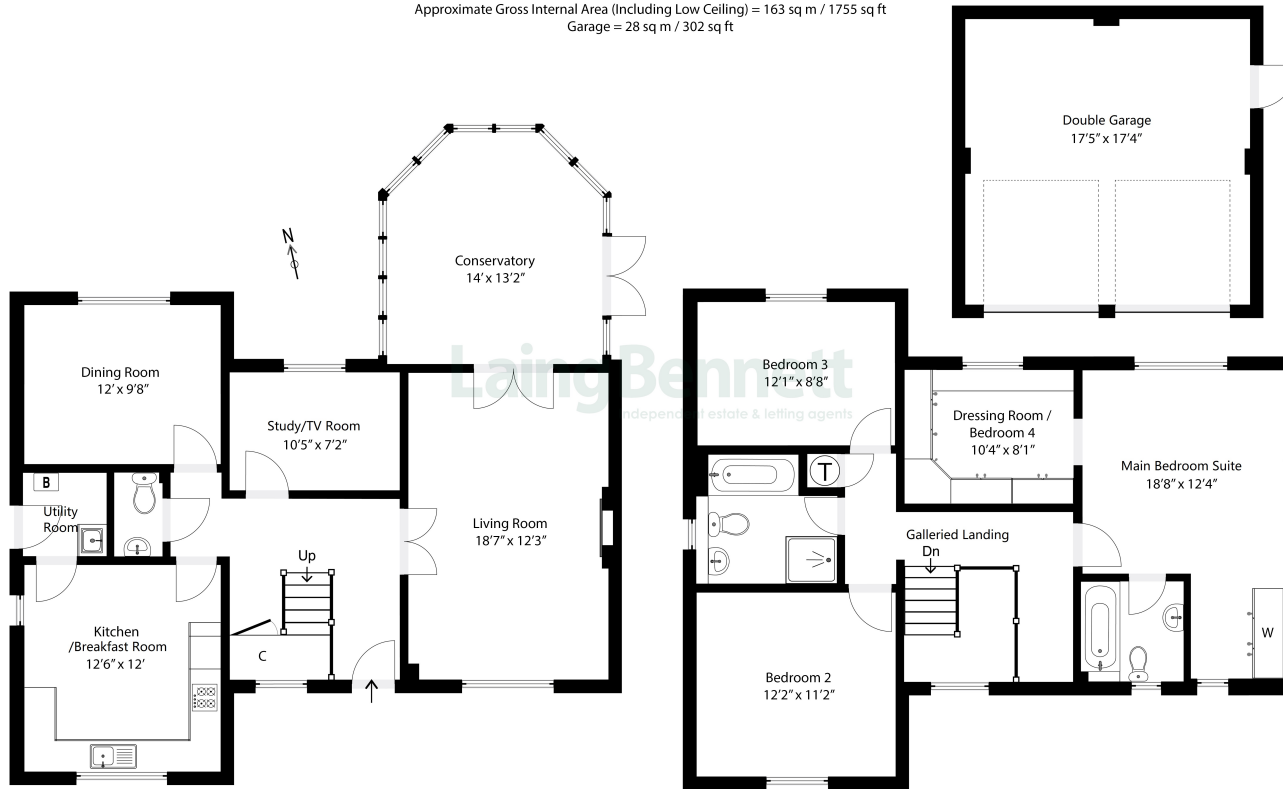


Illustration for identification purposes only. Measurements are approximate. Dimensions given are between the widest points. Not to scale. Outbuildings are not shown in actual location.



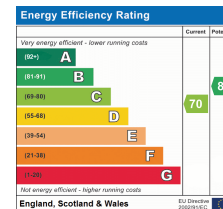
Need to book a viewing?

If you would like to book a viewing please contact our office on 01303 863393 or email sales@laingbennett.co.uk

See all our properties at



www.laingbennett.co.uk



The Estate Office
 8 Station Road
 Lyminge
 Folkestone
 Kent
 CT18 8HP



These property details are intended to give a fair description and give guidance to prospective Purchaser/Tenant. They do not constitute an offer or contract of Sale/Tenancy and all measurements are approximate. While every care has been taken in the preparation of these details neither Laing Bennett Ltd nor the Vendor/ Landlord accept any liability for any statement contained herein. Laing Bennett Ltd has not tested any services, appliances, equipment or facilities, and nothing in these details should be deemed to be a statement that they are in good working order or that the property is in good structural condition or otherwise. We advise all applicants to commission the appropriate investigations before Exchange of Contracts/entering into a Tenancy Agreement. It should not be assumed that any contents/furnishing, furniture etc. photographed are included in the Sale/Tenancy, nor that the property remains as displayed in the photographs. No person in the employment of Laing Bennett Ltd has authority to make or give any representation or warranty whatever in relation to this property.