



Hythe Road, Staines-upon-Thames, Surrey, TW18 3EE

WELL PRESENTED AND SPACIOUS THREE BEDROOM SEMI-DETACHED CHARACTER PROPERTY SITUATED ALONG THIS MUCH SOUGHT AFTER NO-THROUGH ROAD IDEALLY LOCATED FOR EASY ACCESS TO STAINES TOWN CENTRE, LOCAL MOTORWAY NETWORKS & THE RIVER THAMES. The property benefits from a spacious lounge, separated dining room, fitted kitchen, downstairs sitting room/bedroom, three well proportioned bedrooms, modern white bathroom and large secluded rear garden. No Onward Chain. Viewings Highly Recommended!

ROOM DESCRIPTIONS

FLOORPLAN

67 Hythe Road

Approximate Gross Internal Area = 87.5 sq m / 942 sq ft

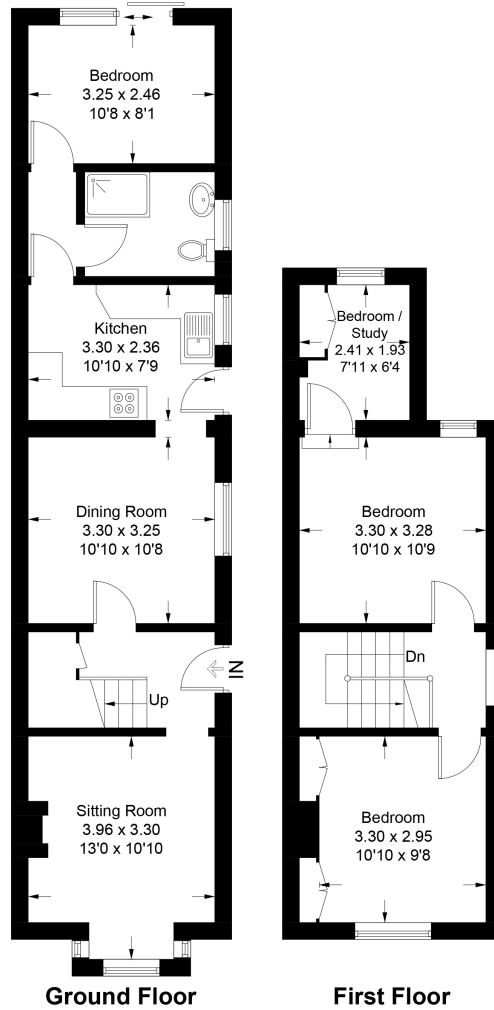


Illustration for identification purposes only, measurements are approximate, not to scale. Fourlabs.co © (ID1143740)