



**16 Sidcup Hill, Sidcup, Kent, DA14 6JP**  
**£350,000 Leasehold**

## Description

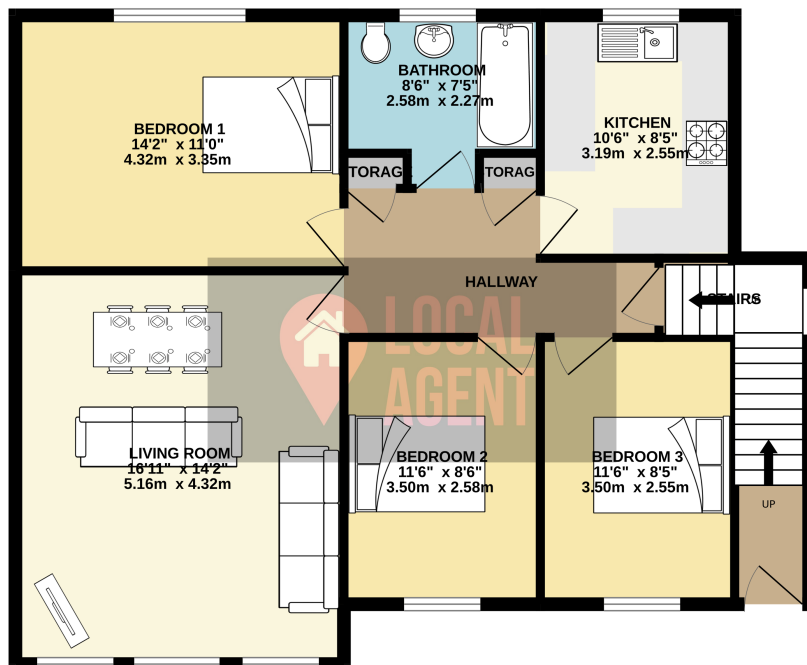
Guide Price £350,000 - £375,000

Situated in a secluded residential close you will find this spacious three bedroom first floor maisonette. Recently decorated throughout, with modern kitchen and bathroom. The living room is a great size for the family to relax and have formal dining area. Externally, there is a garden to the rear and to the front communal grounds for the residents to enjoy. Other benefits include a Garage En-bloc and residents parking.

The property is sold with no chain so a quick transaction is possible. Use our online diary to request your viewing.

Situated in a sought after location set back off the main road you will find this this fantastic three bedroom maisonette. Its location is ideally positioned for access to some of the best schools in the borough with Chislehurst & Sidcup Grammar and Birkbeck Primary with good Ofsted ratings. Locally there is Sidcup Golf Club, the famous Danson Park with historic buildings and lake. Sidcup High Street is approximately 0.7 miles away and footscray parade is approximately 0.1 miles with boutique shops and cafes. Locally there are many restaurants, retail shops and pubs, large supermarket, gyms and recreational grounds with Foots Cray Meadows just a short walk away with 240 acres of woodlands and fields with the river Cray flowing through. The property also benefits from Sidcup Station approximately 1.4 miles away and easy access via bus. The location also benefits from easy access to the A2 and A20 which make this location ideal for the London commuter.

GROUND FLOOR  
870 sq.ft. (80.9 sq.m.) approx.



TOTAL FLOOR AREA: 870 sq.ft. (80.9 sq.m.) approx.

Whilst every attempt has been made to ensure the accuracy of the floorplan contained here, measurements