



30 The Mews

Norton Road, Letchworth Garden City,
Hertfordshire, SG6 1AL
£185,000

country
properties

An impressive two bedroom ground floor apartment located at the popular Norton Hall Farm Development. The property is fully double glazed and benefits from gas to radiator central heating. Modern kitchen and a bathroom suite.

Norton Hall Farm is a small development of apartments and bungalows for people of 50 years and over. Located on the edge of the Garden City close to open countryside. The development has an on site Warden, Monday to Friday and a 24 hour 'pull cord' care line at all other times. Along with the landscaped communal gardens there is a communal residents lounge, kitchen and laundry room.

Within easy walking distance is the Three Horseshoes, Norton and Bickerdykes Garden Centre. The Letchworth Garden City Greenway and open countryside is also close by.

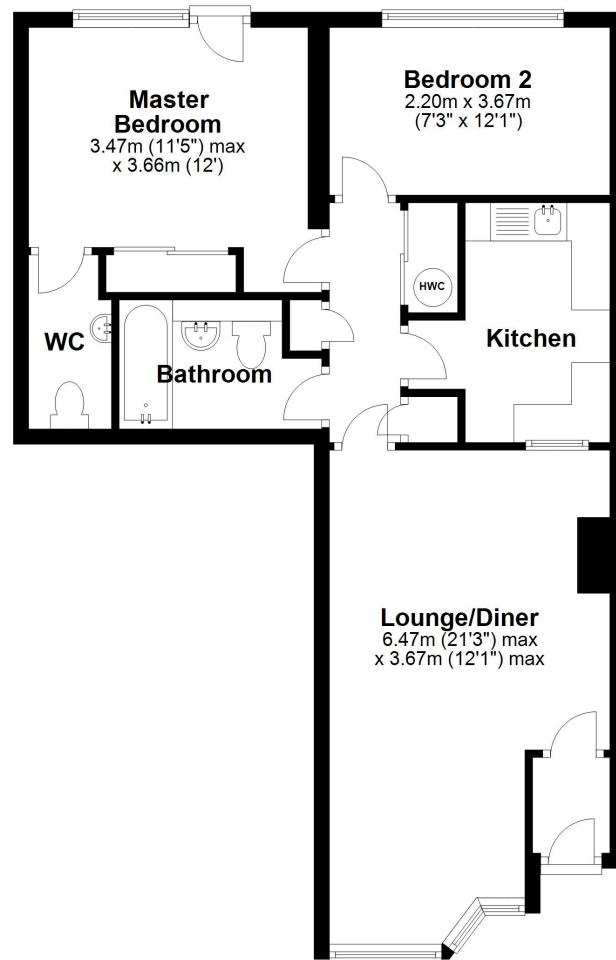
- Smart sought after development for people of 50 years and over
- Two bedrooms, one with en-suite wc & wash hand basin
- Lovely communal gardens, residents lounge and laundry facilities
- No Above Chain - Vacant possession
- Warden and 24 hour careline
- Brand New 90 year lease.
- Service Charge £268.32 pcm



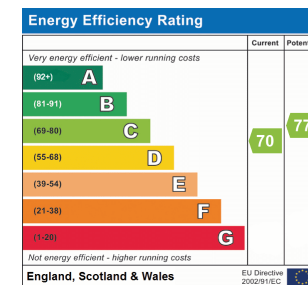


Ground Floor

Approx. 63.0 sq. metres (678.1 sq. feet)



Total area: approx. 63.0 sq. metres (678.1 sq. feet)



All measurements are approximate and quoted in metric with imperial equivalents and for general guidance only and whilst every attempt has been made to ensure accuracy, they must not be relied on. The fixtures, fittings and appliances referred to have not been tested and therefore no guarantee can be given and that they are in working order. Internal photographs are reproduced for general information and it must not be inferred that any item shown is included with the property. For a free valuation, contact the numbers listed on the brochure.

Viewing by appointment only

Country Properties | 7, Howard Park Corner | SG6 1PQ

T: 01462 481100 | E: simon.ellmers@country-properties.co.uk

www.country-properties.co.uk

country properties