

Kilmiston Avenue, Shepperton, TW17 9DL

£975,000



- Stunning 5 Bedroom Chalet Bungalow
- Extended and Fully Refurbished
- Utility Room
- Landscaped Garden with Summer House
- Sought After Road in Central Shepperton
- Three Bathrooms
- Open Plan Kitchen/Living Room
- Freehold, Council Tax Band F £3328

13 Kilmiston Avenue

Approximate Gross Internal Area = 203.7 sq m / 2193 sq ft
 Garage / Storage / Shed / Summer House = 18.9 sq m / 203 sq ft
 Total = 222.6 sq m / 2396 sq ft
 (Including Eaves)

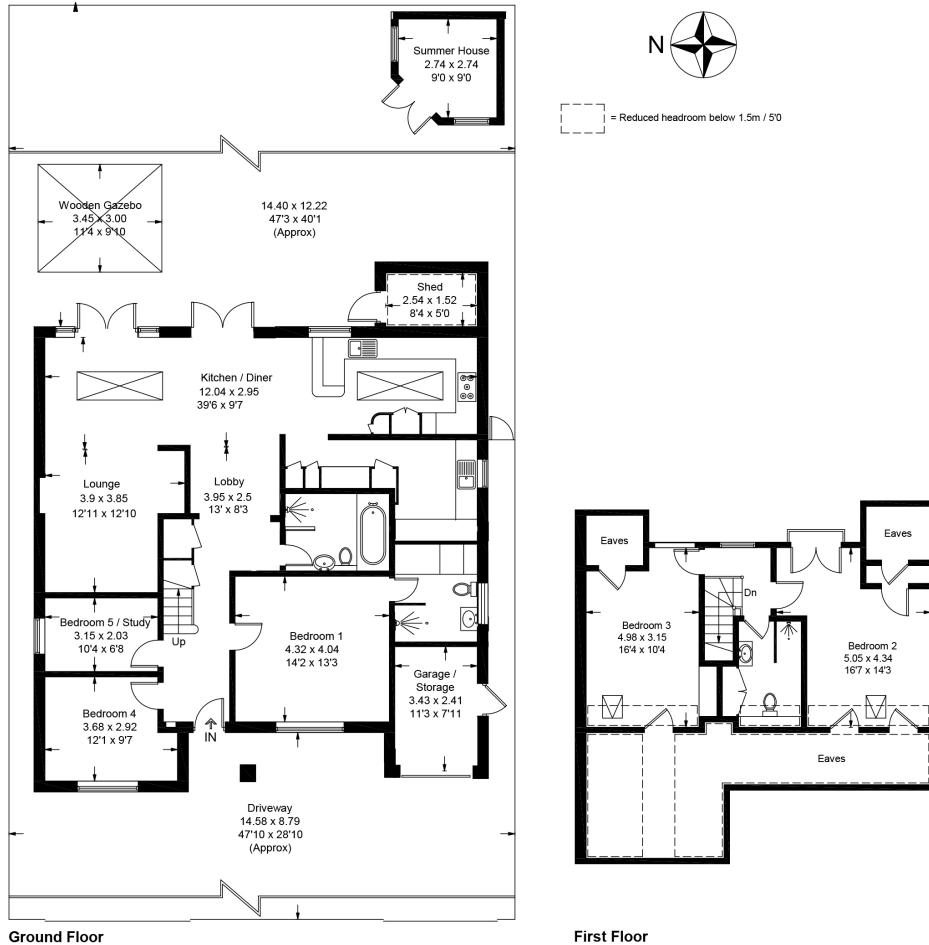
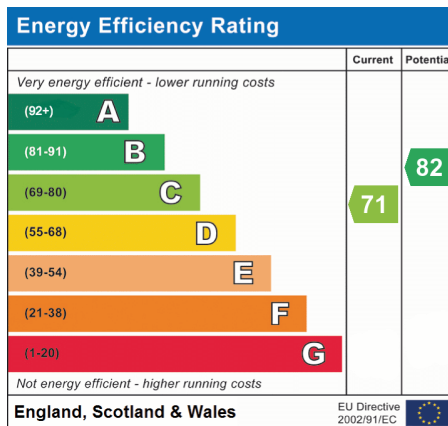


Illustration for identification purposes only, measurements are approximate, not to scale. floorplansUsketch.com © (ID1066717)



We have not tested the services or domestic appliances so we cannot verify that they are in working order. The buyer is advised to obtain verification from their solicitor or surveyor. These particulars form no part of any offer or contract and their accuracy cannot be guaranteed.