

Southview Tram Road

FOLKESTONE, Folkestone
CT20 1RG

£325,000 FREEHOLD

FOR SALE WITH BURNAP + ABEL... Nestled in the charming seaside town of Folkestone, this spacious 3 bedroom town house on Tram Road offers a perfect blend of modern amenities and coastal charm. The open-plan lounge/dining room is perfect for entertaining, while the kitchen is a chef's delight with its sleek appliances and ample storage space. Need a quiet place to work or study? The dedicated study provides the ideal environment. Upstairs, you'll find three comfortable bedrooms and a bright bathroom offering relaxation after a long day. For added convenience, there's also a ground floor W.C. Outside, enjoy the convenience of a garage and off road parking spaces, along with a private rear garden for outdoor enjoyment. Located within walking distance to the bustling harbour, where you can dine at waterfront restaurants or take leisurely strolls by the sea. Don't miss out on this fantastic opportunity to own your dream home in one of Folkestone's most sought-after locations! Contact us today to schedule a viewing.



Entrance Hall

W.C

Study

7' 2" x 5' 11" (2.18m x 1.80m)

First Floor Landing

Lounge/Dining Room

19' 5" x 18' 0" (5.92m x 5.49m)

Kitchen

18' 1" x 8' 5" (5.51m x 2.57m)

Second Floor Landing

Bedroom One

13' 9" x 9' 9" (4.19m x 2.97m)

Bedroom Two

11' 3" x 8' 9" (3.43m x 2.67m)

Bedroom Three

10' 8" x 8' 4" (3.25m x 2.54m)

Bathroom

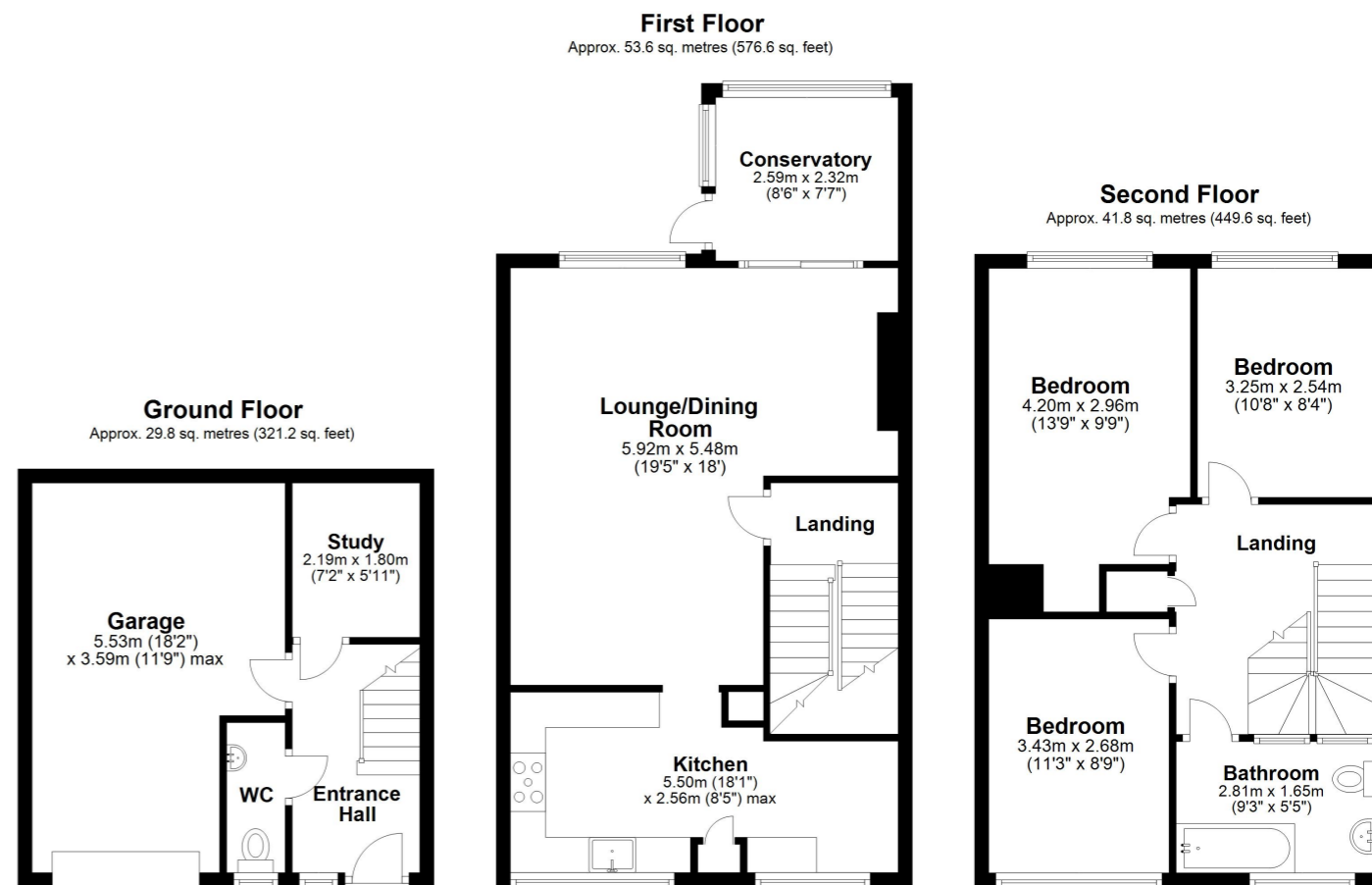
9' 3" x 5' 5" (2.82m x 1.65m)

Garage

18' 2" x 11' 9" (5.54m x 3.58m) Currently converted to cages and storage spaces.

Driveway

Rear Garden



Whilst every attempt has been made to ensure the accuracy of the floor plan contained here, measurements of doors, windows, rooms and any other items are approximate and no responsibility is taken for any error, omission or mis-statement. This plan is for illustrative purposes only and should be used as such by any prospective purchaser.
Plan produced using PlanUp.

