



Arran Court, Moray Close, Edgware. HA8 8AT

**£355,000
Leasehold**

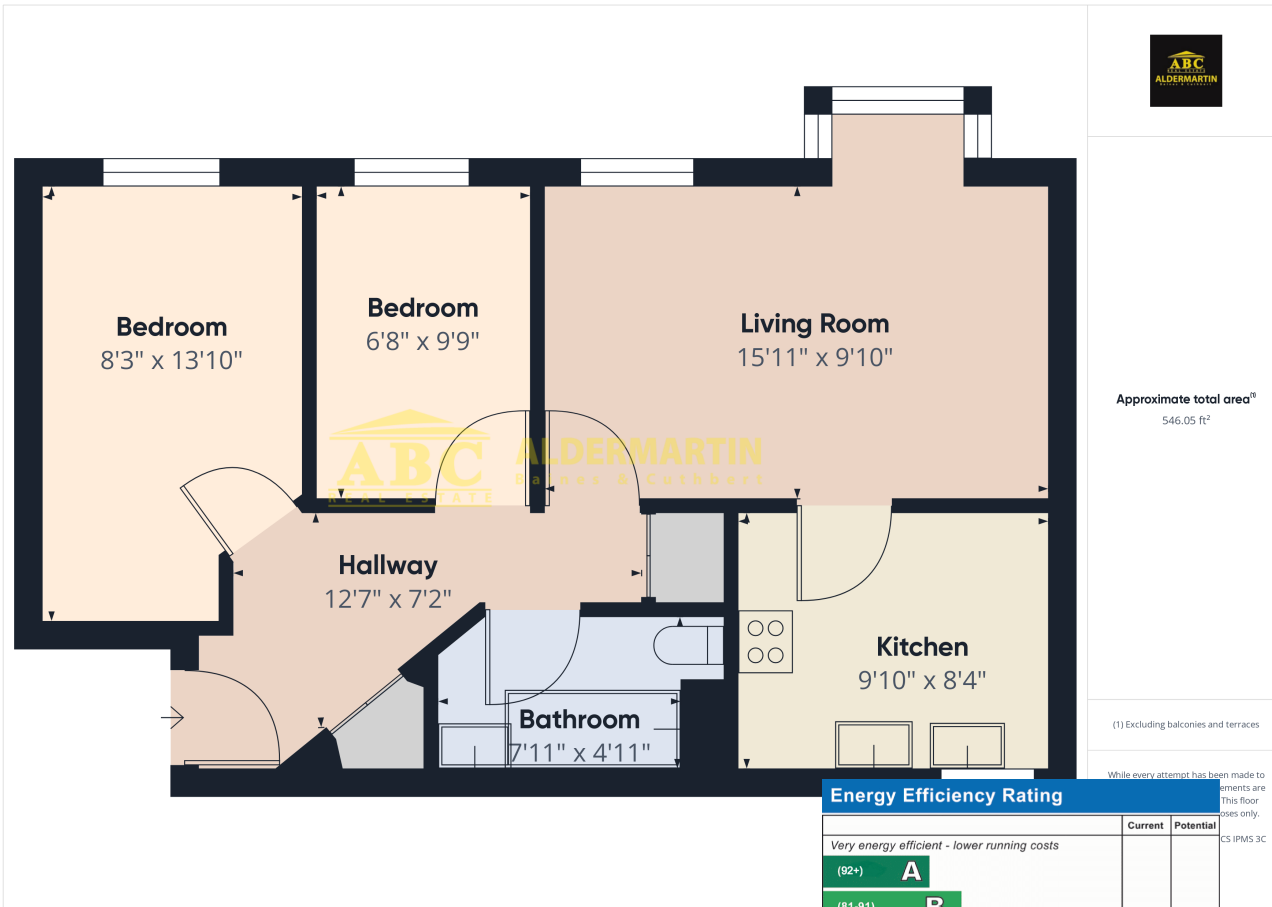


- FIRST FLOOR FLAT
- RESIDENTS PARKING
- 960 YEARS LEASE

- GREAT LOCATION
- SEPARATE FITTED KITCHEN

- 2 BEDROOMS
- EPC RATING C - COUNCIL TAX BAND D

A tidy 2 bedroom first floor flat in this excellent location close to shops, schools and transport links. Including a reception room, a separate kitchen, a bathroom and storage cupboards.



Edgware
02086 214 000
office@abcestates.co.uk

