



10 Willowmead, Staines-upon-Thames, Surrey. TW18 2SH.

2 Bedroom End of Terrace House - £400,000 Freehold

10 Willowmead, Staines-upon-Thames, Surrey. TW18 2SH.

01784 451458

2 Bedroom End of Terrace House - £400,000 Freehold

WELL PRESENTED & EXTENDED END-TERRACED PROPERTY SITUATED ALONG THIS SOUGHT AFTER CLOSE OF SIMILAR-STYLE PROPERTIES IDEALLY LOCATED FOR EASY ACCESS TO STAINES TOWN CENTRE, LOCAL MOTORWAY NETWORKS & HEATHROW AIRPORT. The property benefits from a spacious lounge, separate fitted kitchen, dining room, two double bedrooms, modern white bathroom suite, secluded rear garden and off-street parking. Viewings Highly Recommended!

Key Features

EXTENDED

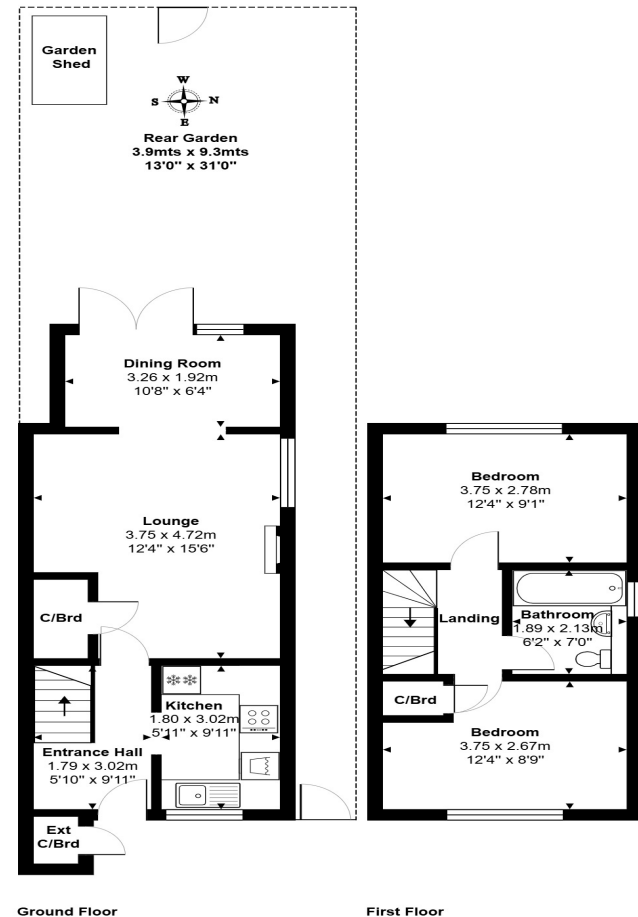
TWO DOUBLE BEDROOMS

EASY ACCESS TO LOCAL MOTORWAY NETWORKS & HEATHROW AIRPORT

SECLUDED REAR GARDEN

OFF-STREET PARKING

10, Willowmead, Laleham, TW18 2SH



Total Area: 66.5 m² ... 716 ft²

All measurements are approximate and for display purposes only.

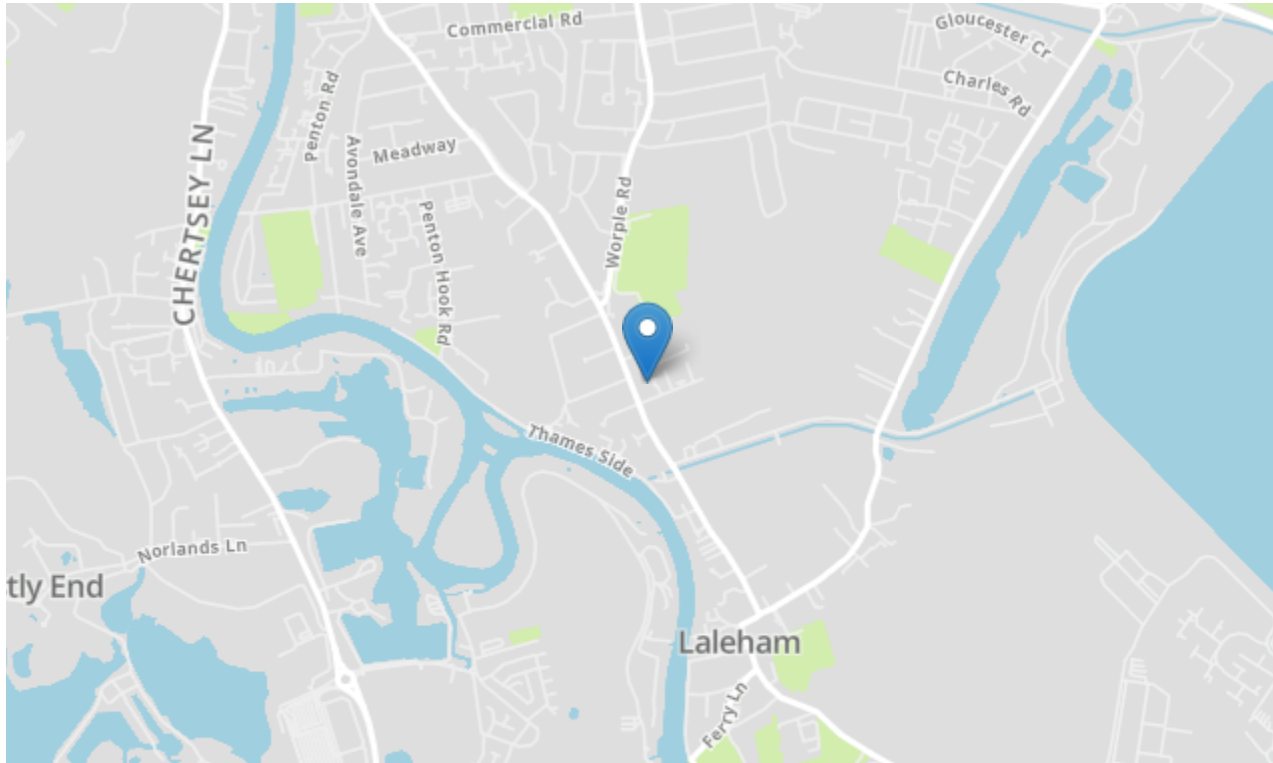


GREGORY BROWN
RESIDENTIAL SALES & LETTINGS



10 Willowmead, Staines-upon-Thames, Surrey. TW18 2SH.

gregory-brown.co.uk



Tenure **Freehold**

Lease Term

Ground Rent

Service Charge

Local Authority

Council Tax

We have prepared these property particulars as a general guide to a broad description of the property. They are not intended to constitute part of an offer or contract. We have not carried out a structural survey and the services, appliances and specific fittings have not been tested. All photographs, measurements, floorplans and distances referred to are given as a guide only and should not be relied upon for the purchase of carpets or any other fixtures or fittings. Lease details, service charges and ground rents (where applicable) and council tax are given as a guide only and should be checked and confirmed by your solicitor prior to exchange of contracts. The copyright of all details, photographs and floorplans remain exclusive to Gregory Brown.

