



**KUBIE GOLD**  
ASSOCIATES

## **DORSET HOUSE** **GLOUCESTER PLACE NW1**



- ONE BED APARTMENT
- SOUGHT AFTER BLOCK.
- FIFTH FLOOR WITH LIFT

- 24 HOUR CONCIERGE
- INCLUDES HEAT & HOT WATER
- AVAILABALE IMMEDIATELY

**£375 per week**

### **SALES, LETTINGS & PROPERTY MANAGEMENT**

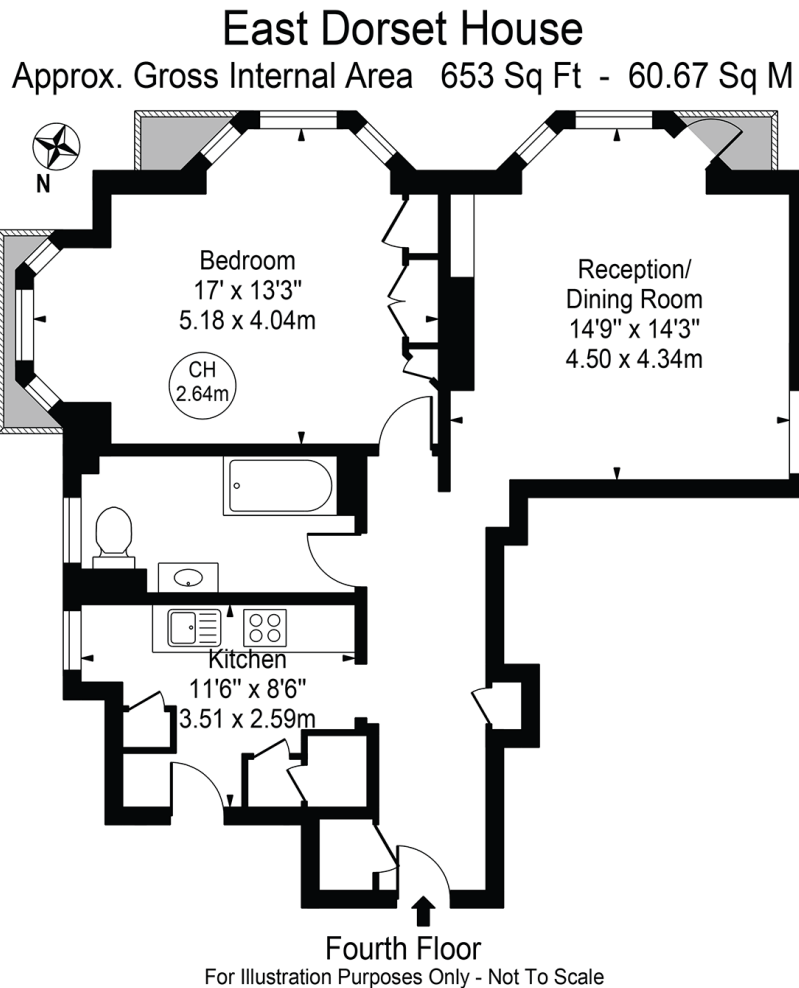
Tel: 020 7563 7272 36 Ivor, Regents Park, London, NW1 6EA  
Email: [info@kubie-gold.co.uk](mailto:info@kubie-gold.co.uk) Website: [www.kubie-gold.co.uk](http://www.kubie-gold.co.uk)

Kubie Gold Associates is the trading name of Kubie Gold Associates Ltd  
Company Registration No. 7271501 registered in England and Wales



## Dorset House, NW1

Large one bedroom apartment in popular portered block, large reception, double bedroom with fitted wardrobes giving ample storage, separate fully fitted kitchen with all appliances W/M T/D & D/W, full family bathroom, set on the fifth floor with a lift, rent includes heating & Hot water, property benefits from 24 hour concierge, situated close to the open spaces of Regents Park and both Marylebone & Baker Street Tube Stations, available immediately.



This floor plan should be used as a general outline for guidance only and does not constitute in whole or in part an offer or contract. Any intending purchaser or lessee should satisfy themselves by inspection, searches, enquiries and full survey as to the correctness of each statement. Any areas, measurements or distances quoted are approximate and should not be used to value a property or be the basis of any sale or let.

Energy Efficiency Rating	
Very energy efficient - lower running costs	Current Potential
(92 to 100) <b>A</b>	
(81 to 91) <b>B</b>	
(69 to 80) <b>C</b>	
(55 to 68) <b>D</b>	
(39 to 54) <b>E</b>	62
(21 to 38) <b>F</b>	
(1 to 20) <b>G</b>	

Not energy efficient - higher running costs

England, Wales & N.Ireland EU Directive 2002/91/EC

Environmental Impact (CO <sub>2</sub> ) Rating	
Very environmentally friendly - lower CO <sub>2</sub> emissions	Current Potential
(92 to 100) <b>A</b>	
(81 to 91) <b>B</b>	
(69 to 80) <b>C</b>	
(55 to 68) <b>D</b>	
(39 to 54) <b>E</b>	
(21 to 38) <b>F</b>	56
(1 to 20) <b>G</b>	

Not environmentally friendly - higher CO<sub>2</sub> emissions

England, Wales & N.Ireland EU Directive 2002/91/EC

