



Perfectly positioned on the fringes of Portishead Marina, ARC is home to 26 new apartments. With 1, 2 and 3 bedroom homes available, including a penthouse with panoramic views, all apartments are finished to a high specification.



Portishead Marina 2 minutes
The 250-berth modern marina, is surrounded by walks and dotted with modern sculpture.

'Flying' Sculpture 2 minutes
Lucy Glendinning's elegant figure soars upwards from Waterside Square, a dynamic symbol of possibility on the Marina.



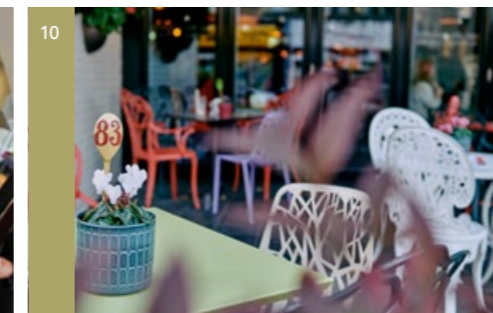
Jubilee Park 8 minutes

The sculpture Arc of Angels by Rick Kirby can be found in Jubilee Park. These five steel characters are made of a patchwork of metal, and are intended to rust naturally.



Located in the heart of Portishead, there is an abundance of independent shops, bars and restaurants, all within walking distance of ARC. Whether you're looking to enjoy dinner with friends, a stroll around the shops or a day at the beach, get ready to explore this vibrant neighbourhood.

- | | | | |
|--------------------|----------------------|------------------------|-----------------------------|
| 1 Aqua | 6 La Marina | 11 Fill Good Pantry | 16 Battery Point Lighthouse |
| 2 Bottelino's | 7 The Royal Inn | 12 Ebb & Flo | 17 Lake Grounds |
| 3 Hall & Woodhouse | 8 The Old Mill | 13 The Butcher's Block | 18 Portishead Open Air Pool |
| 4 Searock | 9 Portishead Brewing | 14 Somerset Hall | 19 Portishead Beach |
| 5 Mokoko | 10 Impero Lounge | 15 Portishead Marina | 20 Jubilee Park |





Rodmoor Rose Garden 7 minutes

This community-run garden lies at the corner of Beach Road West and Rodmoor Road, open for the public to enjoy.



**Battery Point Lighthouse
18 minutes**

This working Portishead landmark lighthouse, built in 1931 stands nine metres tall. Sit on a bench and enjoy looking back towards the town or across the Severn Estuary to the Welsh coastline.

The busy marina is the perfect place to soak up a bustling but relaxed atmosphere. Grab a coffee and amble along the quaysides, admiring the yachts and gazing up the estuary – or catch up with friends for a pint of locally brewed craft beer and a burger. Feeling more adventurous? Why not rent out a paddleboard or watch the yacht racing. With many local community events, there is always something to do.



Mokoko Coffee & Bakery 9 minutes
This independent cafe offers freshly ground coffee, salads and lunches, as well as a whole host of baked goods. With outdoor seating overlooking the marina, Mokoko will be your favourite coffee spot.



Hall & Woodhouse 8 minutes
Constructed out of 28 shipping containers, this waterfront pub and restaurant offers traditional pub food alongside a selection of craft beers. Renowned for their Sunday Roasts, their delicious 28-day aged West Country roast beef is not to be missed.



Bottolino's 2 minutes
Perfectly situated on the marina and just moments from your front door, Bottolino's offers a traditional Italian menu, breathtaking panoramic views of the quay and outside seating to enjoy the view.



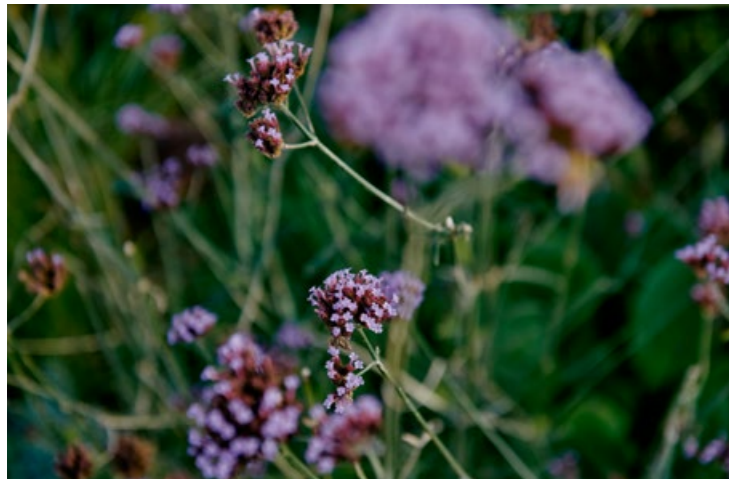
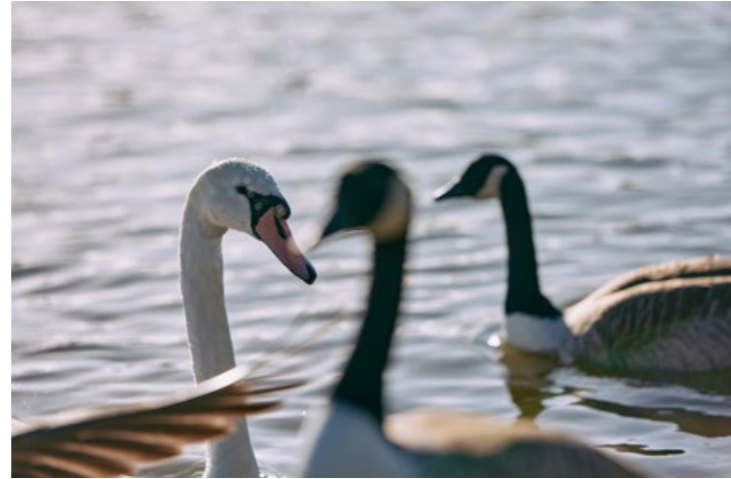
SeaRock 9 minutes
Priding themselves on the quality of the fish used in all their meals – SeaRock is the place to go. Pop in for lunch or enjoy an evening meal in the atmospheric restaurant.



Portishead Cricket Club

10 minutes

A friendly, family-orientated club which welcomes players of all ages and abilities.



Portishead Lake Grounds

11 minutes

Built around an artificial lake, the grounds run alongside the esplanade providing you with a beautiful and scenic walk.

Portishead Tennis Club

16 minutes

Founded in 1924, this thriving club has five all weather floodlit courts, located at Portishead Lake Grounds.

Portishead Open Air Pool

16 minutes

A community-run, open-air, heated swimming pool, sitting right on the seafront.



Portishead High Street was previously known as Mill Street and Duck Street, with the estuary reaching right up to the start of the street. Nowadays, the former water mill houses a much-loved pub, The Old Mill and along the High Street, independent shops thrive, alongside many well-known retailers.



Sarah Tynan Flowers 7 minutes

This local shop, owned by former royal florist, Sarah Tynan, is well known for exquisite bouquets as well as every day flowers, pot plants, candles and quality gifts.



Simply Green 10 minutes

Simply Green started out as a market stall in 2018. Now based on Victoria Square, just off the High Street, they provide a wide range of package-free dried foods and household products.



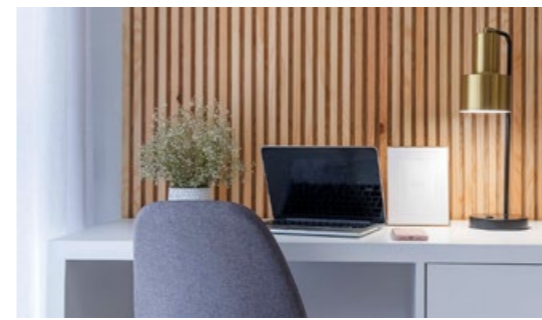
Ebb & Flow 7 minutes

Tucked away in The Old Bakehouse Courtyard is Ebb & Flo, a small independent shop, full of beautiful, ever changing gifts and homewares.





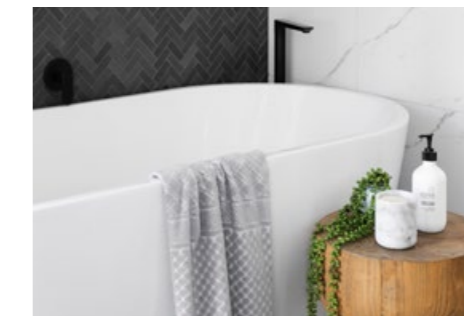
From hardwood floors to bespoke wooden panelling and high quality finishes throughout, every detail has been considered for your comfort.



- Living**
- European Oak Flooring
 - Walls painted in Farrow & Ball colour
 - Built in storage area/TV unit with open shelving painted white
 - Natural Oak wall panels



- Kitchen**
- Integrated appliances
 - Worktop - quartz ultra white
 - Teardrop pendant lights over worktops
 - Walls painted in Farrow & Ball colour



- Ensuite**
- Gloss white 25x50cm wall tiles
 - Wall hung soft close toilet
 - Black fixtures
 - Porcelain floor tiles



- Master Bedroom**
- Walls painted in Farrow & Ball colour
 - Bespoke built in cupboards
 - Carpet in light brown

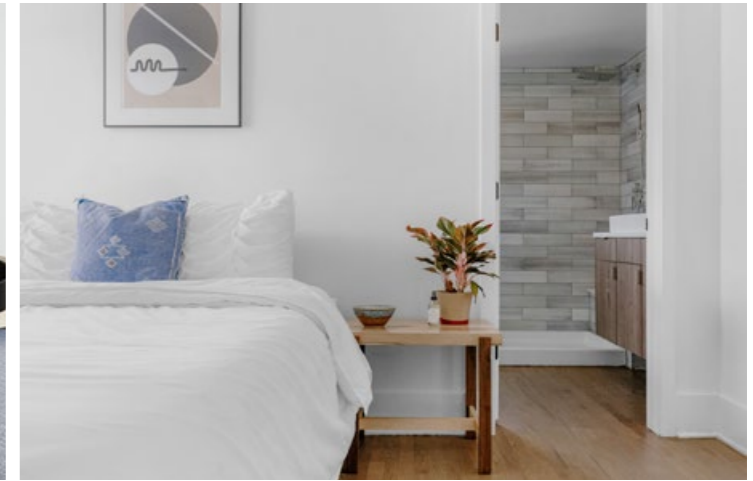
- Bathroom**
- Walls painted in Farrow & Ball colour
 - White wall hung vanity unit and basin
 - Single ended square bath with black framed shower screen
 - White marble effect wall tiles

- Bedrooms**
- Walls painted in Farrow & Ball colour
 - Fitted wardrobes



Clean and modern

With open plan kitchen and living areas, the apartments have been designed to accommodate a modern way of living.



The details

Our team of architects and interior designers have worked to ensure all apartments are designed to the highest specifications throughout.

ARC
Harbour Road
Portishead
BS20 7AW

E: sales@cliftonsandbutlers.co.uk

T: 01275 844 434

W: arcportishead.co.uk

