







Key Features

 4 Bedrooms

 2 Public

 2 Bathrooms

- A well-presented, four bedroom detached home, situated within the popular and highly regarded coastal town of Dalgety Bay
- A fantastic setting for families with transport links available within Dalgety Bay with both Train Station and bus links and M90 motorway easily accessible from the property. Circa 30-minute drive to Edinburgh City Centre and linking throughout central Scotland
- Two primary schools available within Dalgety Bay and bus links to secondary schooling in nearby Inverkeithing
- A wide range of amenities within Dalgety Bay including various supermarkets, local shops, restaurants, leisure facilities and lovely coastal walks along the Firth of Forth. Access to the beautiful Fife Coastal Path at St David's Harbour stretching 117 miles from Kincardine to Newburgh
- Additional amenities available in nearby Dunfermline with additional secondary schooling, leisure facilities and Fife Leisure Park offering a ten screen cinema
- Located within corner plot with parking for several cars
- Entrance hall with WC leading through to a spacious, front facing living room
- Dining room located off the hall leading through to utility room to store white goods and some additional storage. Access onto gardens
- Large, modern kitchen to the rear of the home with a large selection of floor and wall mounted storage, good worktop space and a selection on integrated appliances
- Main bedroom benefits from a fully tiled en suite shower room with walk in shower
- Three further bedrooms with built in wardrobe space within bedrooms two and three
- Tiled family bathroom with three piece suite completes the accommodation
- Neat gardens to the rear with pergola over decking, perfect for alfresco dining and entertaining. South facing aspects
- An excellent family home in a sought after location. Viewing comes highly recommended



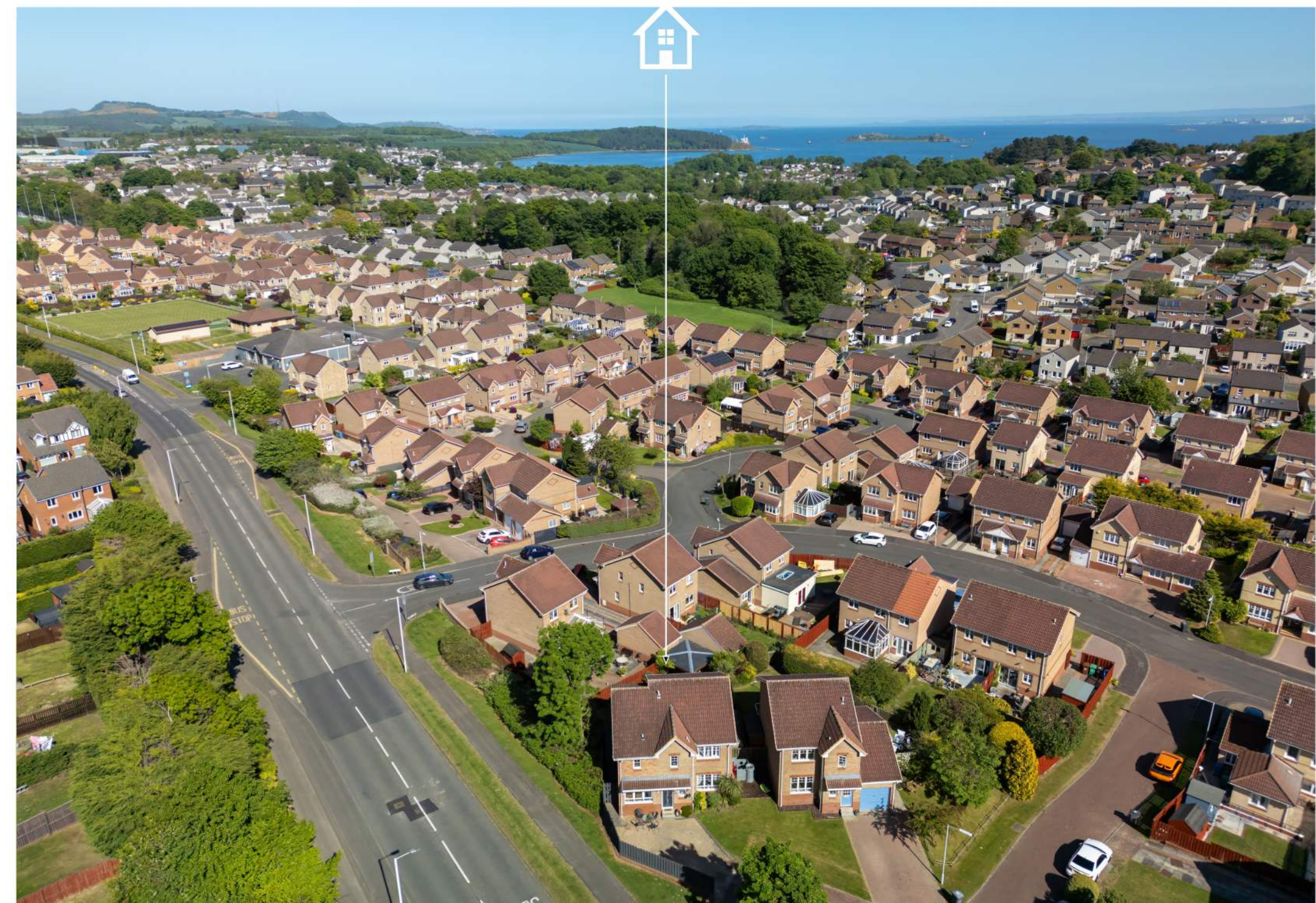


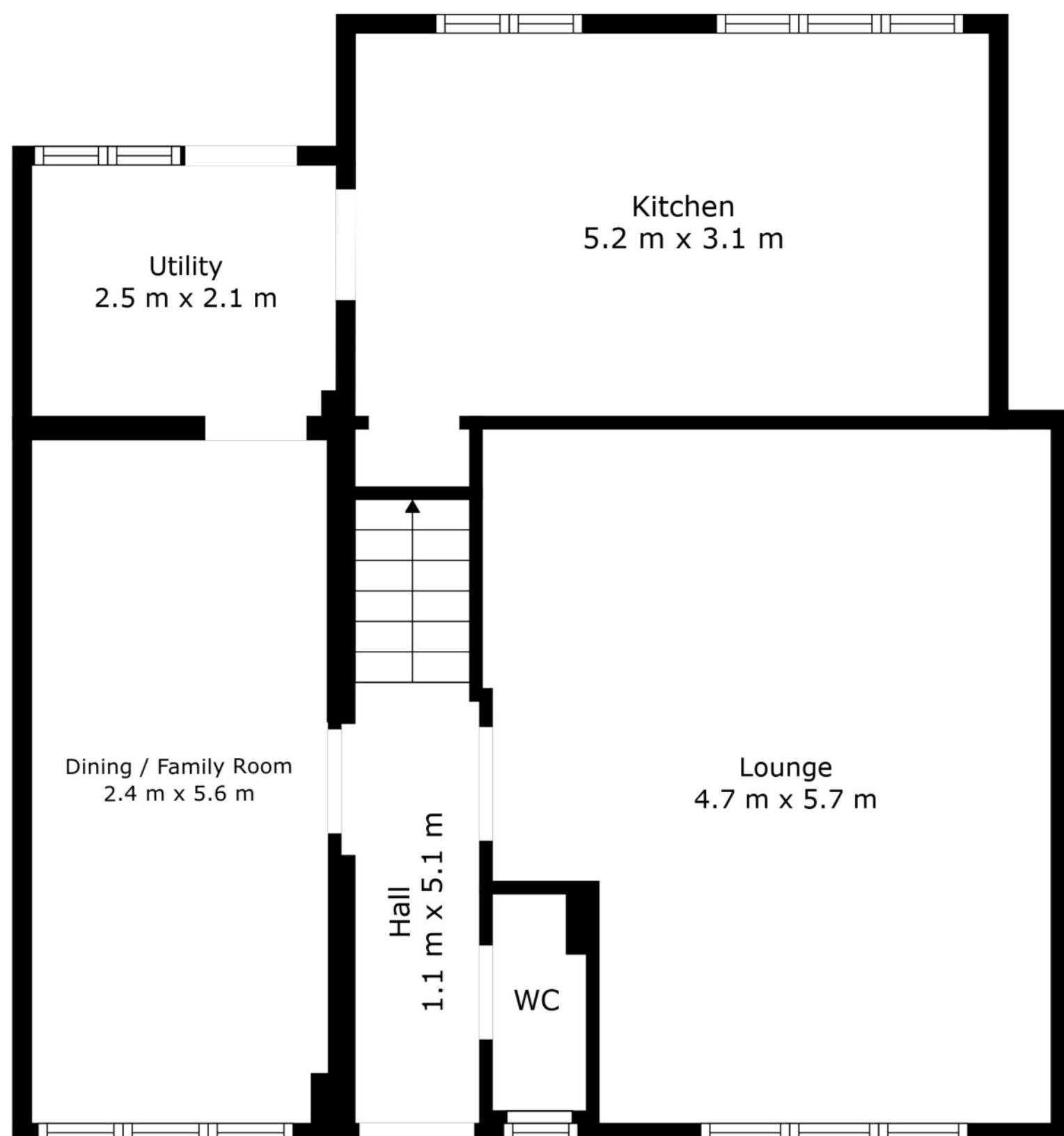
Location

Dalgety Bay, located in Fife along Scotland's picturesque coastline, is a highly sought-after residential area. Known for its modern amenities and tranquil setting, the town offers an excellent mix of suburban living and scenic coastal charm. It boasts a strong community spirit, well-regarded schools, and convenient transport links, including a nearby train station providing easy access to Edinburgh, just 30 minutes away.

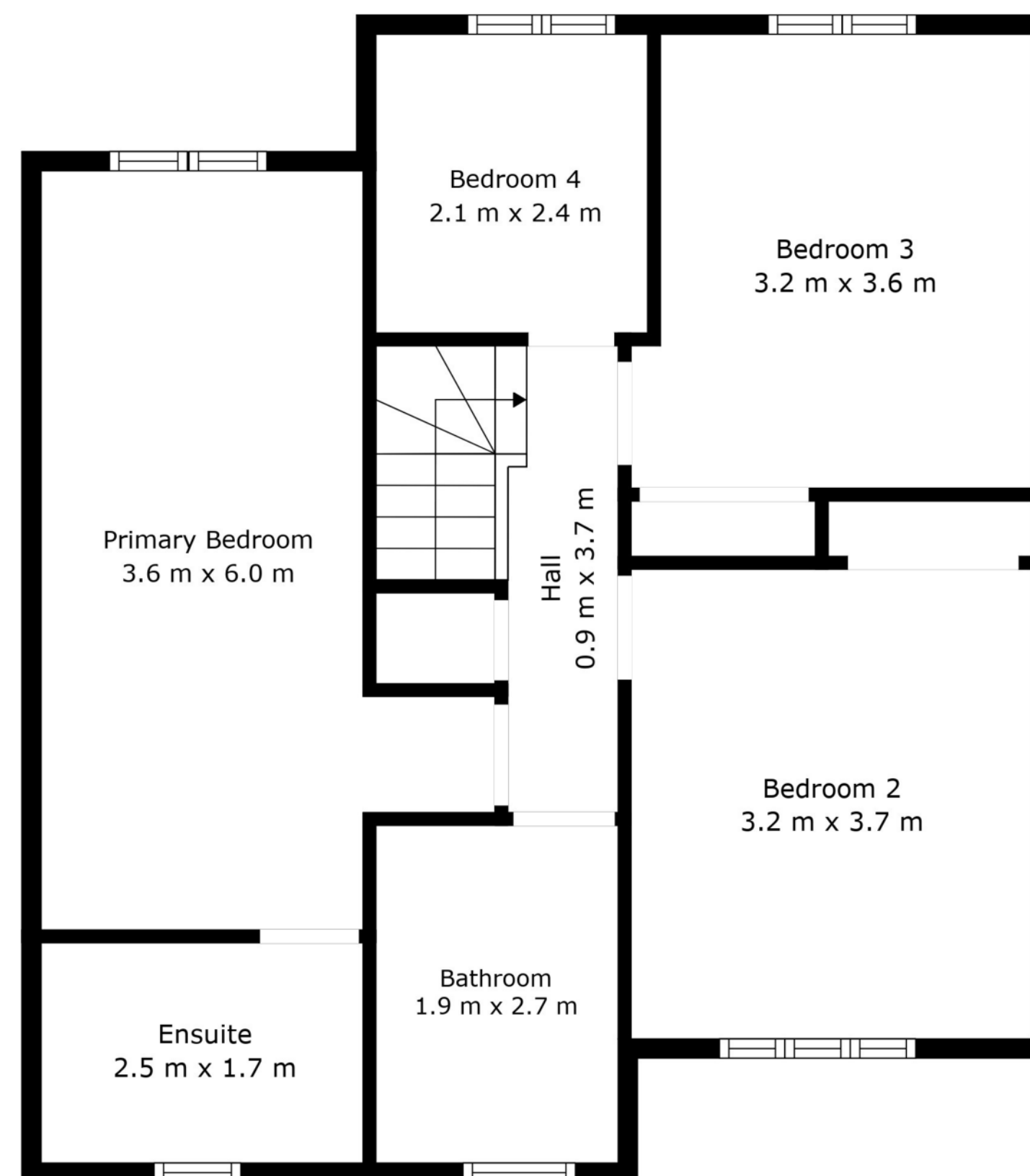
With a variety of properties ranging from contemporary family homes to luxury waterfront apartments, Dalgety Bay appeals to professionals, families, and retirees alike. The town benefits from well-maintained parks, walking trails along the Fife Coastal Path, and proximity to recreational facilities like golf courses and sailing opportunities.

Its combination of modern convenience, natural beauty, and connectivity makes Dalgety Bay a prime location for those seeking a balance of lifestyle and accessibility.





Floor 1



Floor 2



TOTAL: 134 m²
FLOOR 1: 70 m², FLOOR 2: 64 m²

Measurements Are Regarded As Highly Reliable; However, They Cannot Be Guaranteed.



Floorplans are for illustrative purposes only. Measurements are deemed highly reliable but not guaranteed.

Enquiries

 01383 629720

 info@maloco.co.uk

 maloco.co.uk

