

£220,000  
Freehold



**THOMAS CONNOLLY**  
ESTATE AGENTS | LETTING AGENTS | NEW HOMES | PROPERTY MANAGEMENT

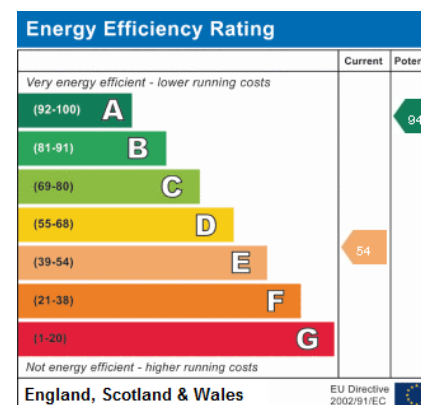


## Summary of Property

Thomas Connolly Estate Agents are delighted to present this one bedroom, end of terrace bungalow situated in the popular location of Furzton, within walking distance of Furzton lake. Furzton is a residential estate based on the West side of Milton Keynes. The area benefits from local shops, medical centre and a dentist, good primary and secondary schools in the catchment area.

The accommodation in brief comprises of; entrance hall, shower room, two storage cupboards, sitting room, kitchen and master bedroom. Outside the property benefits from both front and rear gardens and off road parking for one car.

Please contact us for further information or to confirm your viewing appointment.



## Room Descriptions

**ENTRANCE HALL**

**SHOWER ROOM**

**TWO STORAGE CUPBOARDS**

**SITTING ROOM**

12' 8" x 10' 1" (3.86m x 3.07m)

**BEDROOM**

9' 3" x 8' 2" (2.82m x 2.49m)

**KITCHEN**

10' 0" x 5' 6" (3.05m x 1.68m)

**FRONT AND REAR GARDENS**

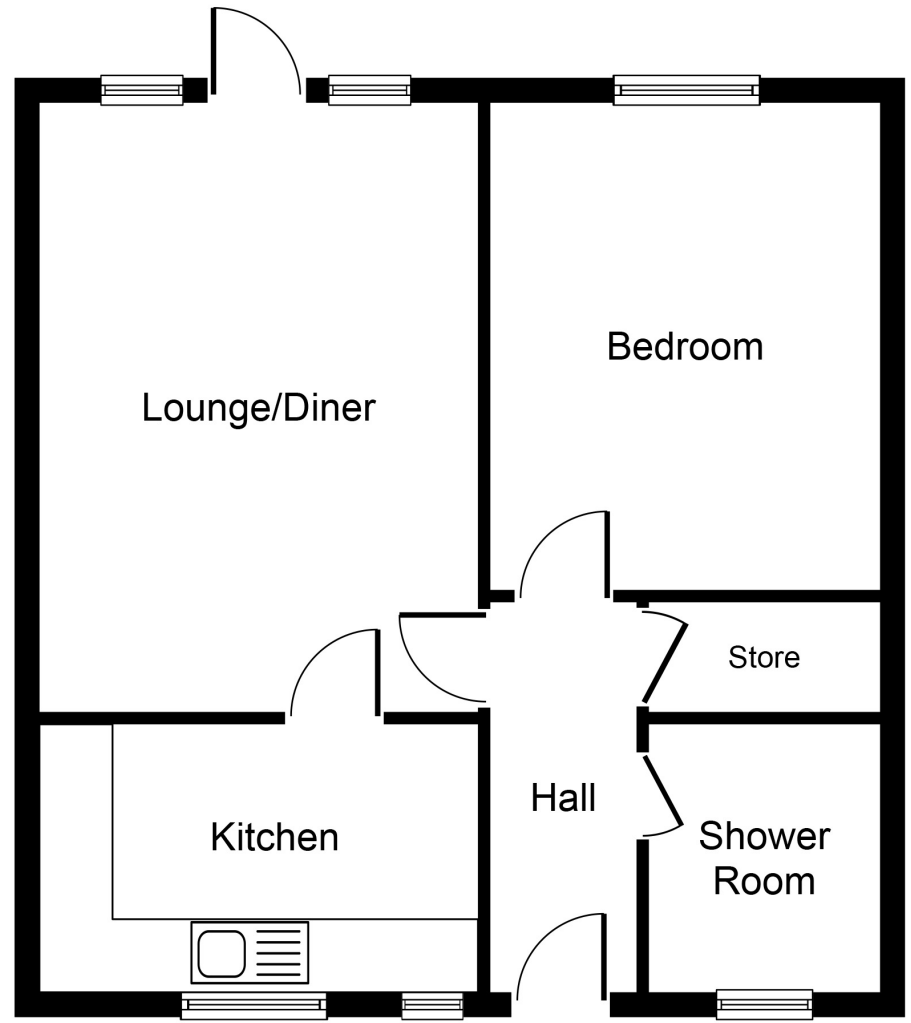
**OFF ROAD PARKING FOR ONE CAR**

### PLEASE NOTE

These property particulars do not constitute part or all of an offer or contract. All measurements are stated for guidance purposes only and may be incorrect. Details of any contents mentioned are supplied for guidance only and must also be considered as potentially incorrect. Thomas Connolly Estate Agents advise perspective buyers to recheck all measurements prior to committing to any expense. We confirm we have not tested any apparatus, equipment, fixtures, fittings or services and it is within the prospective buyers interests to check the working condition of any appliances prior to exchange of contracts. Thomas Connolly Estate Agents has not sought to verify the legal title of the property and the buyers must obtain verification from their solicitor



**THOMAS CONNOLLY**  
ESTATE AGENTS | LETTING AGENTS | NEW HOMES | PROPERTY MANAGEMENT



Whilst every attempt has been made to ensure the accuracy of the floor plan contained here, measurements of doors, windows, rooms and any other items are approximate and no responsibility is taken for any error, omission, or mis-statement. This plan is for illustrative purposes only and should be used as such by any prospective purchaser or tenant. The services, systems and appliances shown have not been tested and no guarantee as to their operability or efficiency can be given.

Copyright V360 Ltd 2022 | [www.houseviz.com](http://www.houseviz.com)