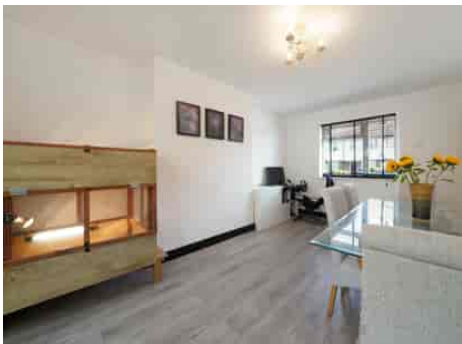


Truuli



Onslow Road, Croydon, Surrey, CR0 3NZ

£425,000 Freehold

- Stunning & stylish finish throughout
- End of terrace family home
- 16" Kitchen breakfast room
- Beautiful, well maintained garden
- Generous living & dining space
- Off street parking

Southbridge Place, Croydon, Surrey, CR0 4HA

Tel: 0330 043 0002

Email: save@truuli.co.uk Web: www.truuli.co.uk

Onslow Road, Croydon, Surrey, CR0 3NZ

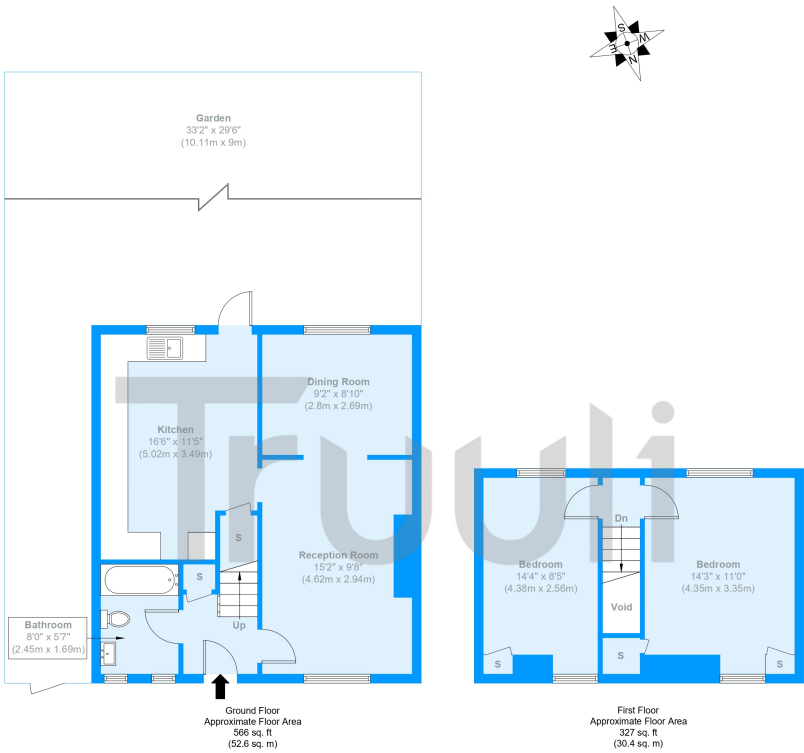
£425,000 Freehold

Vendors comments "We've loved our time at Onslow Road but now our family has grown it's time for a new adventure. When we first moved in as first time buyers the house was definitely a 'fixer upper' and we have loved every minute of doing it - designing a home we're so proud to own.

The property is ideally positioned for commuting to central London with just a short 15 minute walk into Croydon and there are schools also nearby. With easy access to transport and large supermarkets and IKEA so close, it is really easy just to "nip" to the shops also for entertainment.

We have loved living here, but it's now time for a new venture and we're sure new buyers will love it here as much as we have".

Onslow Road



Approximate Gross Internal Area = 83 sq m / 893 sq ft

The Floor plan is not to scale and measurements and areas shown are approximate and therefore should be used for illustrative purposes only. The plan has been prepared in accordance with the RICS code of Measuring Practice and whilst we have confidence in the information produced it must not be relied on. Maximum lengths and widths are represented on the floor plan. If there is any aspect of particular importance, you should carry out or commission your own inspection of the property.
Copyright @ BleuPlan

