

*New homes of exceptional quality. Sought after address on the fringes of Cardigan town centre.
Close to Gwbert. West Wales.*



Plot 1 Cae'r Winllan Gwbert Road, Cardigan, Ceredigion. SA43 1PH.

£620,000

R/3925/RD

****Exceptional high standard**Only 5 remaining**5/6 bed family home**No expense spared on fixtures and fittings**Renowned and award winning local developer**Impressive scale and standard of living accommodation**Set within commodious plot with private rear garden**Planning permission for the erection of garage**Private driveway with ample parking for 4+ vehicles**Ready to view**House can be completed within 2 months**Walking distance to town centre amenities**10 minutes walk to Gwbert estuary**Loads of individual extra fixtures & fittings**Car Port** AN EXCITING OPPORTUNITY TO SECURE A HIGH CALIBRE PROPERTY WHICH WON'T BE AROUND FOR LONG ****

The property is situated within the popular coastal and estuary town of Cardigan offering a good level of local amenities and services including primary and secondary schools, new community hospital, theatre and cinema, traditional high street offerings, retail park, industrial estates, 6th form college, excellent leisure and public transport facilities and being in close proximity to Gwbert estuary and the Pembrokeshire National Park is also within some 10 minutes drive of the property.



LAMPETER
12, Harford Square, Lampeter,
Ceredigion, SA48 7DT
Tel:01570 423623
lampeter@morgananddavies.co.uk



ABERAERON
4, Market Street, Aberaeron,
Ceredigion, SA46 0AS
Tel:01545 571 600
aberaeron@morgananddavies.co.uk



CARMARTHEN
11, Lammas St, Carmarthen,
Carmarthenshire, SA31 3AD
Tel:01267 493444
carmarthen@morgananddavies.co.uk

GENERAL



An exciting new development from Cartrefi Moelfre Homes, one of the most respected home builders within the West Wales region.

An award winning company, the development site at Cae'r Winllan continues their reputation of providing exceptional quality, high efficiency with low running costs and with no expense spared on fixtures and fittings.

An exclusive and sought after development of some 6 houses, with only 5 remaining.

Each house sits within large plots with ample private rear garden space, parking and the option of the erection of a garage. Plot 3 already has the garage in place.

If you catch the houses early you will have the option to choose your own kitchen and bathroom as well as flooring and tiling etc.

The homes are highly insulative with energy efficient air source heating systems and to the latest modern and economic standards. Under-floor heating throughout.

A full set of drawings are available via the estate agents but viewing at the earliest opportunity is encouraged.

Extra Over Items

To include -

** Karndean Palio flooring**

Saxony Carpets to stairs and upstairs

Wallboard to all bathrooms and en suites

**Symphony Dusk fitted wardrobes to bedrooms 1 and 2 **

Carrara stone worktops in kitchen

Symphony cranbrook fitted kitchen and utility room in platinum with Blonde Oak interiors and Neff appliances

Border plants and shrubs

Morevelle powder coated aluminium car port

GROUND FLOOR

Entrance Porch



1.9m x 1.5m (6' 3" x 4' 11") accessed via composite panel door with side glass panels into:

Entrance Hallway

2.1m x 3.1m (6' 11" x 10' 2") with access to:

Bedroom 1

3.1m x 3.2m (10' 2" x 10' 6") double bedroom, window to front, multiple sockets, symphony Dusk fitted wardrobes.

En-Suite

0.8m x 3.1m (2' 7" x 10' 2") with space for a walk-in shower, WC, single wash hand basin.

Family Room

6.1m x 4.5m (20' 0" x 14' 9") a good sized family living room with feature bay window to rear and separate patio doors to the rear covered entrance and patio, ample space for large furniture, multiple sockets, TV point, sliding doors access into:

Open Plan Kitchen and Dining Area

7.7m x 3.1m (25' 3" x 10' 2") also accessible from the entrance hallway with kitchen to front with Symphony cranbrook fitted kitchen in platinum with Blonde Oak interiors with Carrara stone worktops, Neff appliances, sink and drainer. Window to front. Dining area with space for 6+ persons table, feature bay window to rear garden, connecting door to:

Utility Room

with Symphony cranbrook fitted kitchen in platinum with Blonde Oak interiors with Carrara stone worktops, Neff appliances, external door to front, washing machine connection point, access into:

Cloakroom

with space for corner shower, WC, single wash hand basin.

FIRST FLOOR**Landing Area**

with access to airing cupboard, Saxony carpets to stairs and upstairs.

Bedroom 2/Master Bedroom

2.9m x 4.1m (9' 6" x 13' 5") double bedroom, window to rear garden, multiple sockets, radiator, symphony Dusk fitted wardrobes. access to:

Walk-In Dressing Room

3.3m x 2.1m (10' 10" x 6' 11") with window to rear garden, ample room for clothes shelving and racking and access into:

En-Suite

3.2m x 2.1m (10' 6" x 6' 11") space for luxurious en-suite with

corner shower, single wash hand basin, WC, Velux rooflight over.

Please note there is still an opportunity to select your own kitchen and bathrooms at this stage.

Bedroom 3

3.7m x 9m (12' 2" x 29' 6") double bedroom, window to front, multiple sockets, radiator.

Bathroom

3m x 1.9m (9' 10" x 6' 3") with space for panelled bath, separate walk-in shower, WC, single wash hand basin, heated towel rail, window to front.

Bedroom 4

3.5m x 3.4m (11' 6" x 11' 2") double bedroom, window to front, multiple sockets, radiator.

Bedroom 5

3.2m x 4.1m (10' 6" x 13' 5") double bedroom, window to rear garden, multiple sockets, radiator.

Attic Room

9.5m x 4.4m (31' 2" x 14' 5") a great addition to this property offering the potential for additional bedroom space, work space/home office or play room, great flexibility and potential plumbing for en-suite facility on request, Velux rooflights over, multiple sockets, radiator.

EXTERNALLY**To Front**

The property is approached via the adjoining estate road to a walled garden with tarmac driveway with space for 4+ vehicles to park and front lawn area with also planning permission in place for the erection of a detached garage.

Please note that the approved garage measures 6.3m x 4.6m with up and over door, side windows and pedestrian door.



To Rear

An enclosed and walled rear garden area being completely private and set down from the adjoining road level with extending patio from the rear dining room and family room and garden predominantly laid to lawn.



To the Side



Morvelle powder coated aluminium car port

TENURE

The property is of Freehold Tenure.

MONEY LAUNDERING REGULATIONS

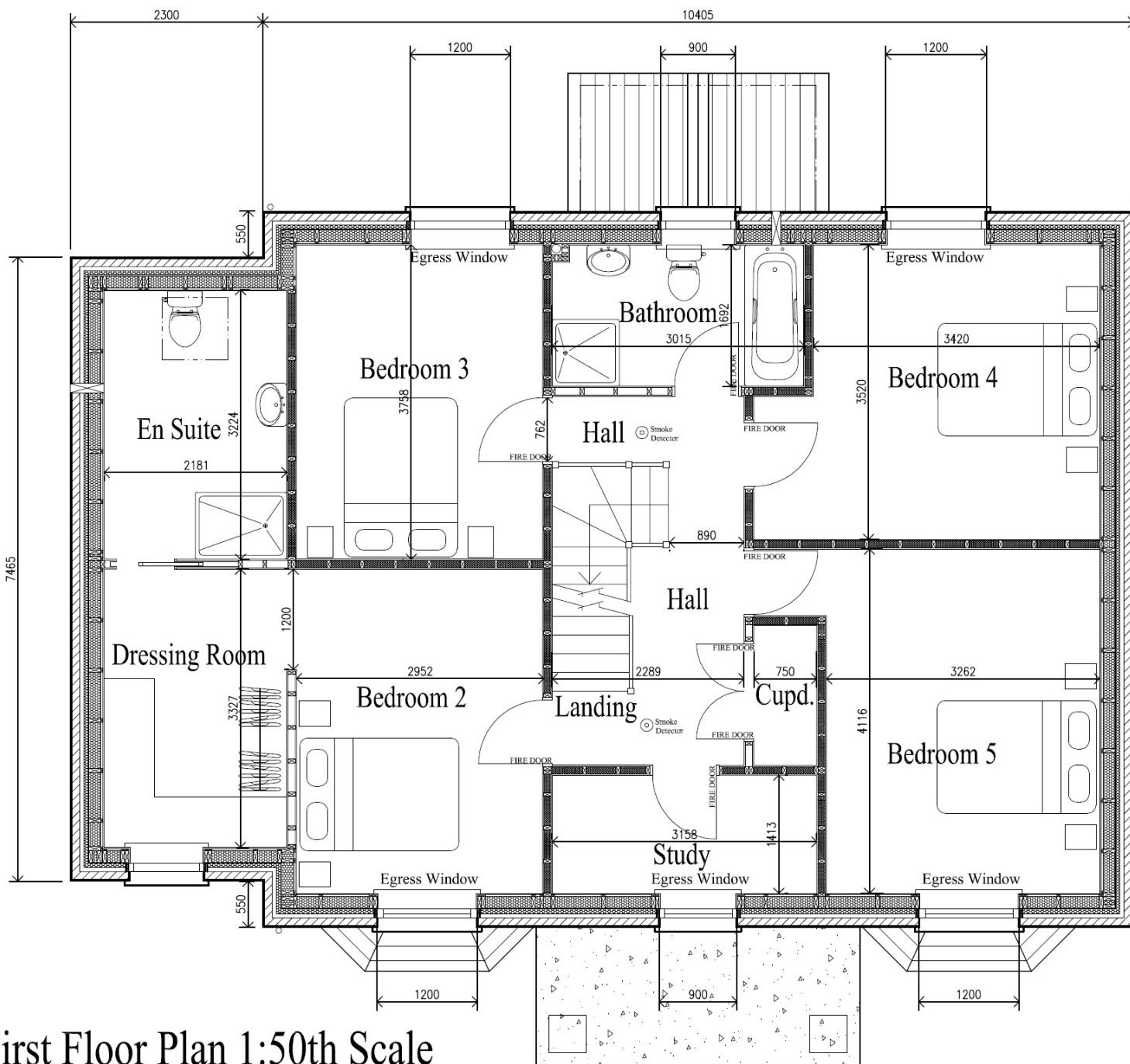
The successful purchaser will be required to produce adequate identification to prove their identity within the terms of the Money Laundering Regulations. Appropriate examples include: Passport/Photo Driving Licence and a recent Utility Bill. Proof of funds will also be required, or mortgage in principle papers if a mortgage is required

Services

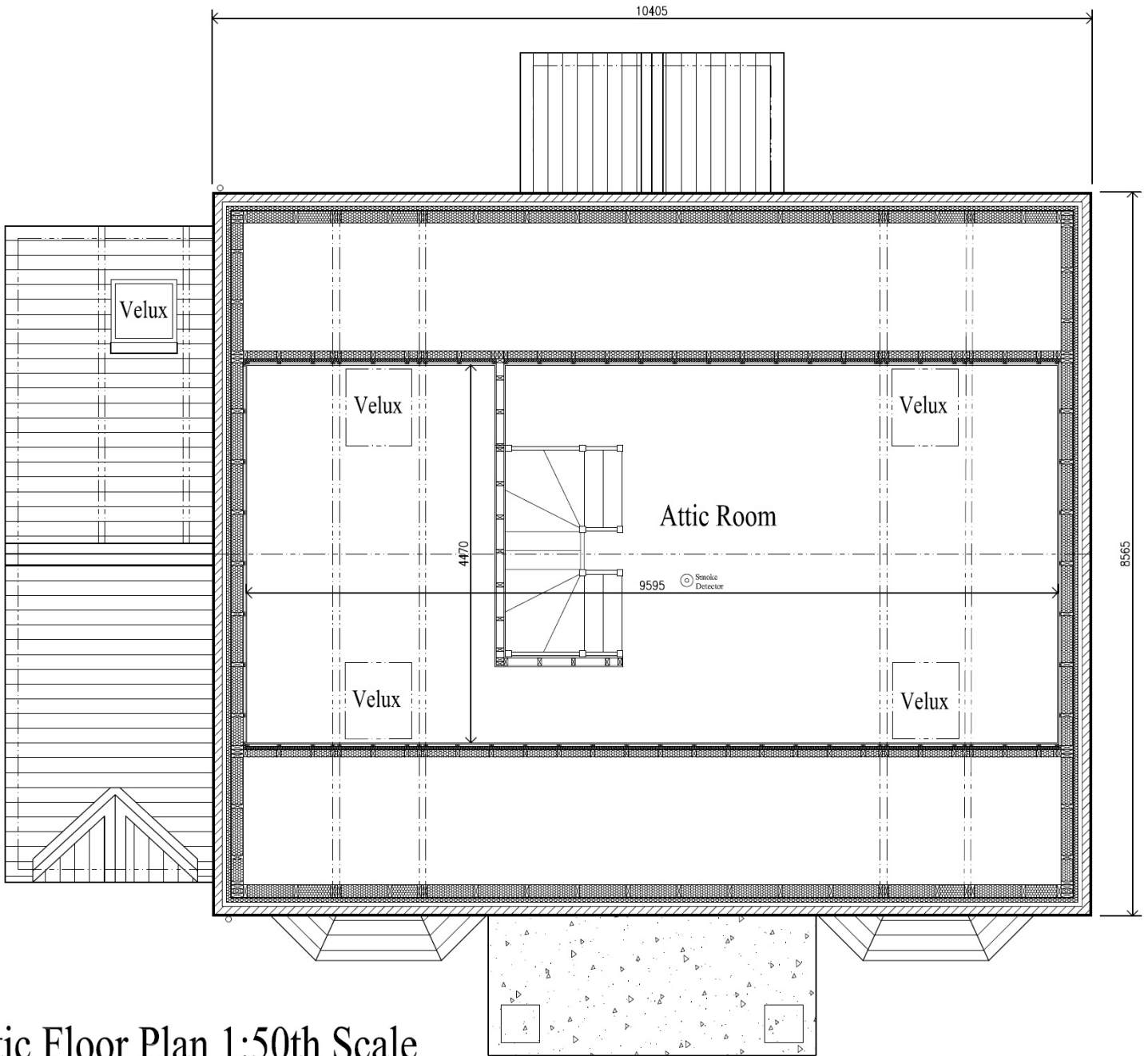
We are advised the property benefits from mains water, electricity and drainage. Air source central heating.

Council Tax banding to be confirmed.

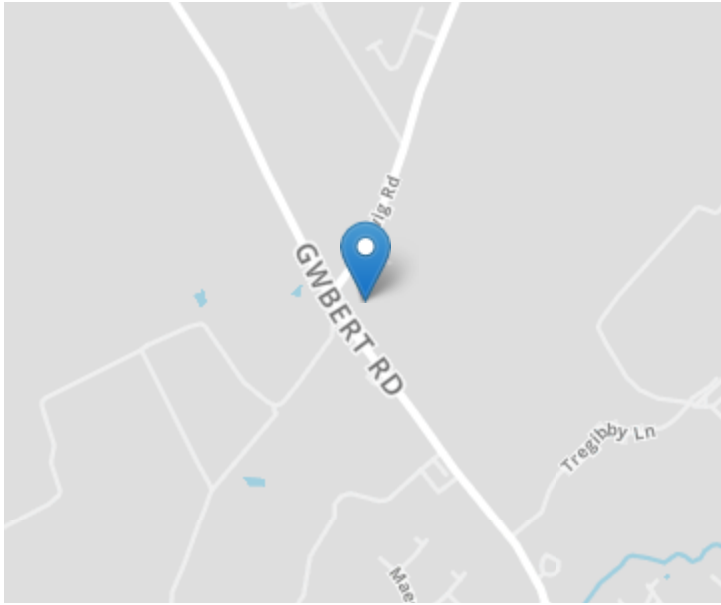




First Floor Plan 1:50th Scale



Attic Floor Plan 1:50th Scale



Directions

From North Road, Cardigan heading out of the town centre proceed towards Gwbert on the B4548 adjoining the Cardigan Bowls Club and Rugby Club and proceed along Gwbert Road for approximately ½ mile travelling through the mini roundabout and after passing a straight of large houses on your right hand side there is a sign post turning to Ferwig, take the right hand exit here and after some 100 yards the entrance to Llwynpia is on your right hand side. Enter the estate road and bare right and the entrance to the new homes is immediately in front of you.

For further information or to arrange a viewing on this property please contact :

Aberaeron Office
4 Market Street
Aberaeron
Ceredigion
SA46 0AS

T: 01545 571 600

E: aberaeron@morgananddavies.co.uk

<http://www.morgananddavies.co.uk>



Regulated by

RICS[®]

