

WEST NEWHALL FARMHOUSE

Kingsbarns, St Andrews, KY16 8QE



Thorntons 
The right way to move



WELCOME TO WEST NEWHALL FARMHOUSE

A traditional five-bedroom Georgian farmhouse set amongst the open countryside by the village of Kingsbarns, offering a truly picturesque country and coastal lifestyle, in addition to an abundance of living space, generous private parking, and incredible wraparound gardens.

CONTENTS

- 04 **FLOORPLAN**
- 07 **WEST NEWHALL FARMHOUSE**
A B-listed Georgian property (circa 1800)
- 09 **THE ENTRANCE**
With a beautiful Georgian façade, the home instantly captivates
- 11 **RECEPTION ROOMS**
Ideal spaces for unwinding and socialising
- 16 **KITCHEN & DINING ROOM**
A focal point of the home, enjoying a tremendous footprint and triple-aspect windows
- 19 **THE BEDROOMS**
Five double bedrooms offering a tranquil space for a peaceful night's sleep
- 21 **THE WASHROOMS**
A quality shower room and bathroom
- 22 **GARDENS & PARKING**
Enveloped by enclosed gardens that offer an extensive amount of outdoor space
- 26 **KINGSBARNs, FIFE**
Lying approximately seven miles from St Andrews

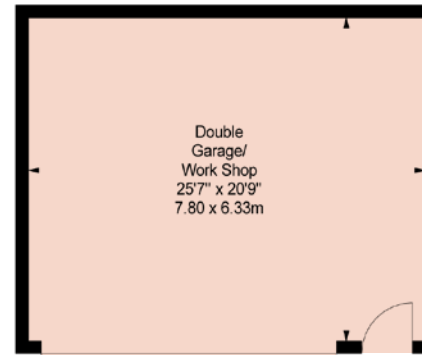
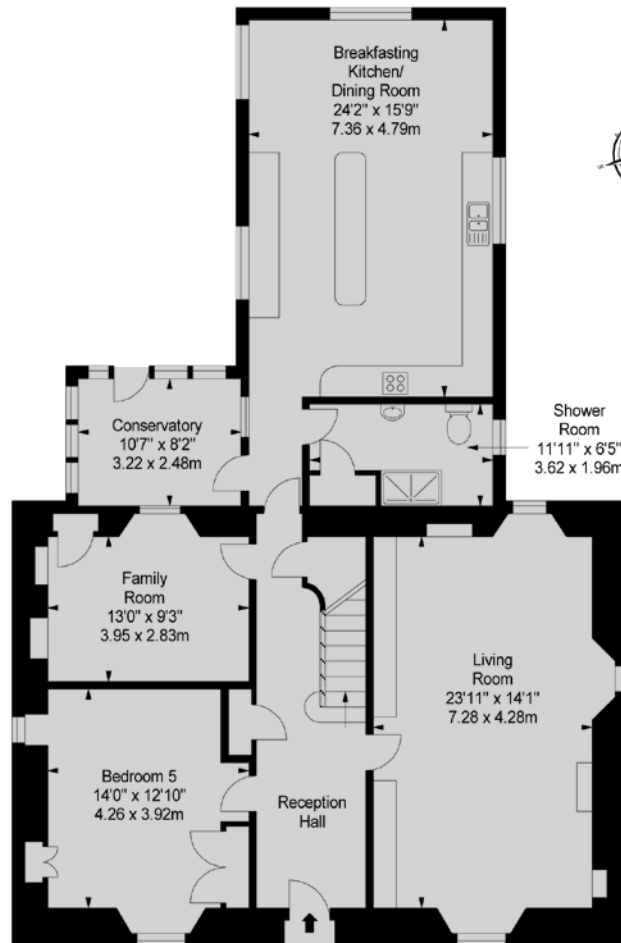
PROPERTY NAME
West Newhall Farmhouse

LOCATION
Kingsbarns, St Andrews, KY16 8QE

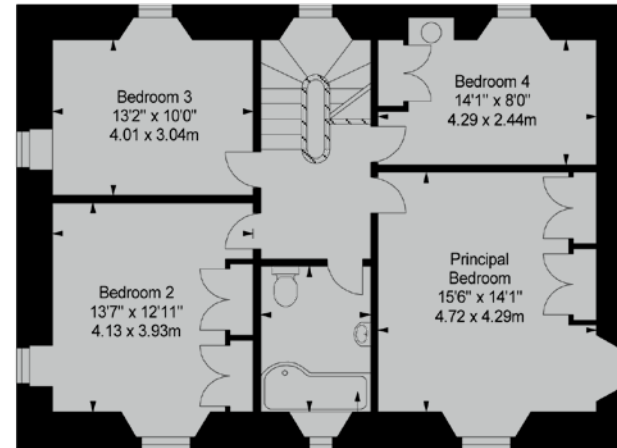
APPROXIMATE TOTAL AREA:
280.6 sq. metres (3020.5 sq. feet)

Ground Floor - First Floor - External -

The floorplan is for illustrative purposes. All sizes are approximate.



First Floor
Approx. 88.4 sq. metres (951.6 sq. feet)



Bathroom
9'4" x 7'0"
2.84 x 2.14m



WEST NEWHALL FARMHOUSE

West Newhall Farmhouse is a B-listed Georgian property (circa 1800), which offers all the benefits of traditional architecture – the expansive rooms, high ceilings, and period flourishes – coupled with stylish modern interiors that are finished to exceptionally high standards. The five-bedroom home further boasts multiple reception rooms, including a statement breakfasting kitchen, two contemporary bathrooms, ample private parking, and magical gardens that will please the entire family. Exclusive and rarely available, the residence offers a highly sought-after rural lifestyle, surrounded by open countryside with spectacular views as far as the eye can see. Part of a small farm community, it offers a real sense of seclusion, yet it is less than a five minutes' drive from Kingsbarns village, where a selection of amenities and a stunning beach await. It is also just 15 minutes by car from the historic town of St Andrews, home to more extensive shopping facilities, more beaches, and world-famous golfing facilities.

GENERAL FEATURES

- A detached B-listed Georgian farmhouse (circa 1800)
- Offers a country and coastal lifestyle by Kingsbarns
- Peaceful setting surrounded by open countryside
- Just 15 minutes from the town of St Andrews
- Stylish modern interiors finished to high standards
- EPC Rating - E

ACCOMMODATION FEATURES

- Striking reception hall with two cupboards
- Triple-aspect living room with open fireplace
- Charming family room with shelved recesses
- Dual-aspect conservatory with garden views
- Expansive breakfasting kitchen/dining room
- Five spacious and airy double bedrooms
- Generous built-in wardrobe storage
- Contemporary three-piece shower room
- Premium bathroom with three-piece suite
- Double/secondary-glazed sash windows
- Oil fired central heating

EXTERIOR FEATURES

- Extensive wraparound gardens that are landscaped
- Large driveway and double garage/workshop



INVITING YOU INSIDE A SPECTACULAR GEORGIAN FAMILY HOME

With a beautiful Georgian façade, the home instantly captivates. The front door, ornamented by a half-circle transom window, opens to a striking reception hall, which catches the eye with its neutral palette, checkered floor, and traditional staircase. Two built-in cupboards provide on-hand storage too.





MULTIPLE RECEPTION ROOMS TO ENJOY

West Newhall Farmhouse has a number of reception rooms to choose from. The living room, with its expansive dimensions, is the ideal space for unwinding and socialising. It features triple-aspect windows for a light-filled ambience and a stunning open fireplace with a lavish surround displaying impressive craftsmanship. Light neutral décor and a plush carpet enhance the space further, in addition to ornate fitted bookshelves which bring added decoration.





FAMILY ROOM & CONSERVATORY

In addition, there is a charming family room, which features a press cupboard and two shelved recesses for ornamentation. Decorated in dark olive tones and with white detailing, it is a delightful room for spending time with the family. A dual-aspect conservatory provides another space for relaxation, one that is perfect for soaking up the garden ambiance whatever the weather.



OPEN-PLAN

BREAKFASTING KITCHEN & DINING ROOM

The open-plan breakfasting kitchen/dining room is a focal point of the home, enjoying a tremendous footprint and triple-aspect windows. It is designed around a central island with a breakfast bar and it features an eye-catching combination of modern white cabinets and chunky wooden worktops. It is a stylish and enduring design, which is further enhanced by sandy-hued splashback tiles and plenty of floorspace for a table and chairs. It also comes with an excellent range of appliances (integrated double oven, microwave, ceramic hob, and dishwasher, and freestanding fridge/freezer, and washing machine).



IMPRESSIVELY LARGE

BEDROOMS WITH BEAUTIFUL STYLING



Finished to high standards with attractive décor, the five double bedrooms all offer a tranquil space for a peaceful night's sleep – one enhanced by traditional (working) window shutters. Each room has generous dimensions for a wide choice of bedside furnishings and all the rooms (except bedroom three) have excellent built-in wardrobe storage. Similarly, most the rooms have dual-aspect windows as well, heightening an airy ambience. Plus, the fourth bedroom has the advantage of a fitted washbasin. Bedrooms one to four are on the first floor, off a brightly lit landing that allows extra light into the home, whilst the fifth bedroom is easily accessed on the ground floor.





A QUALITY SHOWER ROOM & BATHROOM

A contemporary three-piece shower room serves the ground floor, providing a double walk-in rainfall shower. On the first floor, there is a premium three-piece bathroom, fitted with a P-shaped bathtub and overhead rainfall shower – all enveloped in a pleasing mix of white décor and sandy-toned tiling. The property has oil fired central heating and sash and case windows, which have a mix of double and secondary glazing.

A photograph of a two-story stone farmhouse with a grey slate roof and two chimneys. The house is surrounded by a lush garden with various trees and shrubs. A gravel driveway leads to the front of the house. The text 'MATURE WRAPAROUND GARDENS' is overlaid in large white letters, with 'FOR THE ENTIRE FAMILY' in smaller white letters below it.

MATURE WRAPAROUND GARDENS

FOR THE ENTIRE FAMILY

West Newhall Farmhouse is enveloped by enclosed gardens that offer an extensive amount of outdoor space. The front garden is tiered, with a magnificent lawn leading up to a low-maintenance area that is perfect for alfresco dining in the sun. The rear garden also has easy-to-maintain areas for summer entertaining and it is backed by a manicured lawn. Both spaces offer a true haven for families, incorporating established planting and mature trees. Facing to the east and west, respectively, they also catch the sun throughout the entire day. There is also a large driveway providing private parking for multiple vehicles, in addition to a detached double garage which has workshop space as well.

Extras: all fitted floor and window coverings, light fittings, integrated kitchen appliances, freestanding fridge/freezer, and washing machine to be included in the sale.



KINGSBARNs

APPROXIMATELY SEVEN MILES FROM
ST ANDREWS



The desirable East Neuk village of Kingsbarns lies approximately seven miles from St Andrews and, due to its excellent location, is easily accessible to other towns and villages within the Kingdom of Fife and has been recognised as an outstanding conservation area. With its distinctive village square, Kingsbarns enjoys its own local amenities and these include a Post Office, a primary school, handsome church and, within walking distance, a beautiful beach. The village also has a vintage gift shop and tea room, as well as The Inn at Kingsbarns, offering accommodation, a cosy bar, and home-cooked meals, along with a number of other hotels and B&Bs. For golfing enthusiasts the Kingsbarns Golf Links, rated one of the best new golf courses in the world, is proving a challenging experience and the excellent Fairmont St Andrews complex offers a range of high-class facilities. If you prefer to exercise indoors, St Andrews also offers a number of gyms, leisure centres, fitness and exercise groups, and a swimming pool. In addition, the links courses at Crail are only 3 miles away and of course St Andrews has numerous world-renowned amenities as well. Kingsbarns convenient location close to road links allow swift travel by car and bus, whilst train links can be found nearby in Leuchars.



Thorntons

The right way to move

► Our Branches

ANSTRUTHER

5A Shore Street, Anstruther, KY10 3EA
01333 310481
anstrutheara@thorntons-law.co.uk

ARBROATH

165 High Street, Arbroath, DD1 1DR
01241 876633
arbroathea@thorntons-law.co.uk

BONNYRIGG

3-7 High Street, Bonnyrigg, EH19 2DA
0131 663 7135
bonnyriggea@thorntons-law.co.uk

CUPAR

49 Bonnygate, Cupar, KY15 4BY
01334 656564
cuparea@thorntons-law.co.uk

DUNDEE

Whitehall House, 33 Yeaman Shore
Dundee DD1 4BJ
01382 200099
dundeeea@thorntons-law.co.uk

EDINBURGH

Citypoint, 3rd Floor, 65 Haymarket
Terrace, Edinburgh, EH12 5HD
0131 297 5980
edinburghea@thorntons-law.co.uk

FORFAR

53 East High Street, Forfar, DD8 2EL
01307 466886
forfarea@thorntons-law.co.uk

MONTROSE

55 High Street, Montrose, DD10 8LR
01674 673444
montroseea@thorntons-law.co.uk

PERTH

7 Whitefriars Crescent, Perth, PH2 0PA
01738 443456
perthea@thorntons-law.co.uk

ST ANDREWS

17-21 Bell Street, St Andrews, KY16 9UR
01334 474200
standrewsea@thorntons-law.co.uk

Thorntons is a trading name of Thorntons Law LLP Regulated by The Law Society of Scotland



@ThorntonsPropertyServices



@thorntonsproperty



@ThorntonsPS