





Bathed in natural light and boasting a high quality finish throughout it is ideal for those that want a home ready to move into. Accommodation comprises: Ground floor - porch, entrance hall, living/dining room, fitted kitchen, utility room, inner hallway, shower room, bedroom one and bedroom two opening to garden room. Outside: front garden driveway, garage and enclosed well kept rear garden with shed and greenhouse. Gas central heating. EPC RATING = C

**Guide Price £375,000**

**Tenure** Freehold

**Property Type** Semi-Detached Bungalow

**Receptions** 2

**Bedrooms** 2

**Bathrooms** 1

**Parking** Driveway & garage

**Heating** Gas

**EPC Rating** C

**Council Tax** Band C

Folkestone And Hythe District Council



## Situation

This property is located in 'Ethelburga Drive' a cul de sac in the village of Lyminge. The village offers amenities including a convenience Shop & Post Office, Doctors surgery, Hairdressers & Barbers, Chemist and sought after Primary School. The village offers various clubs and societies and there are good bus links to both Canterbury and Folkestone. Lyminge is a thriving community with lots of activities for all ages. Nestled in the Kent Downs area of outstanding natural beauty there is an abundance of walks, cycle routes and bridle paths in the area. In the nearby town of Folkestone, there are mainline railway stations with High Speed service to London Stratford and St Pancras stations with an Approx. journey time of 53 minutes. Close to the M20 and Channel Tunnel.

## The accommodation comprises:

### Ground floor

#### Porch

#### Living/dining room

17' 4" x 12' 3" (5.28m x 3.73m)

#### Kitchen

10' 9" x 7' 1" (3.28m x 2.16m)

#### Utility

9' 3" x 3' 3" (2.82m x 0.99m)

#### Bedroom one

13' 5" x 8' 11" (4.09m x 2.72m)

#### Bedroom two

10' 4" x 8' 10" (3.15m x 2.69m)

#### Garden room

11' 0" x 10' 2" (3.35m x 3.10m)

#### Shower room

### Outside

#### Front garden

#### Driveway

#### Garage with roller door

19' 10" x 9' 1" (6.05m x 2.77m)

#### Rear garden

#### Garden shed



Approximate Gross Internal Area = 68 sq m / 733 sq ft  
 Garage = 17 sq m / 179 sq ft

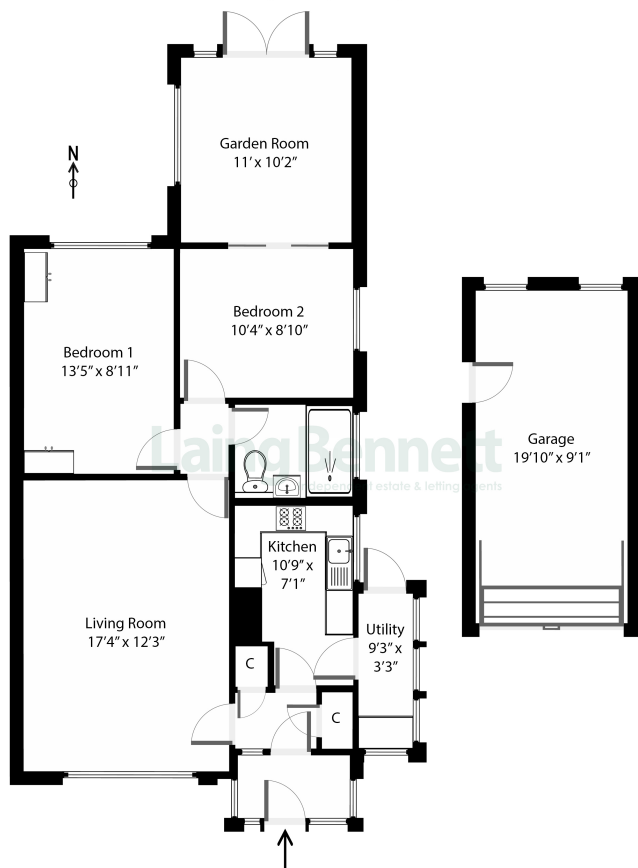


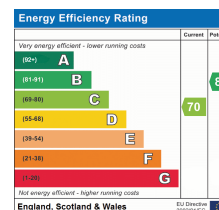
Illustration for identification purposes only. Measurements are approximate. Not to scale. Outbuildings are not shown in actual location.



Need to book a viewing?

If you would like to book a viewing please contact our office on 01303 863393 or email [sales@laingbennett.co.uk](mailto:sales@laingbennett.co.uk)

See all our properties at



[www.laingbennett.co.uk](http://www.laingbennett.co.uk)

The Estate Office  
 8 Station Road  
 Lyminge  
 Folkestone  
 Kent  
 CT18 8HP



These property details are intended to give a fair description and give guidance to prospective Purchaser/Tenant. They do not constitute an offer or contract of Sale/Tenancy and all measurements are approximate. While every care has been taken in the preparation of these details neither Laing Bennett Ltd nor the Vendor/ Landlord accept any liability for any statement contained herein. Laing Bennett Ltd has not tested any services, appliances, equipment or facilities, and nothing in these details should be deemed to be a statement that they are in good working order or that the property is in good structural condition or otherwise. We advise all applicants to commission the appropriate investigations before Exchange of Contracts/entering into a Tenancy Agreement. It should not be assumed that any contents/furnishing, furniture etc. photographed are included in the Sale/Tenancy, nor that the property remains as displayed in the photographs. No person in the employment of Laing Bennett Ltd has authority to make or give any representation or warranty whatever in relation to this property.