



Ryder Court, Charles Sevrigh Way, Mill Hill, NW7

£595,000



Ryder Court, Charles Sevrigh Way, Mill Hill, NW7

A well presented two double bedroom, two bathroom apartment situated on the first floor of this modern building benefiting from a long lease and an allocated parking space.

This generously proportioned flat offers 850 Sq Ft (78 Sq M) of internal space including a stunning open plan kitchen reception room with ample dining space and direct access to the delightful balcony. Further key features include a contemporary fully fitted kitchen, two spacious bedrooms and two stylish bathrooms.

Ryder Court is located within the highly sought after Millbrook Park, situated just 0.5 miles from Mill Hill East underground station (Northern Line).

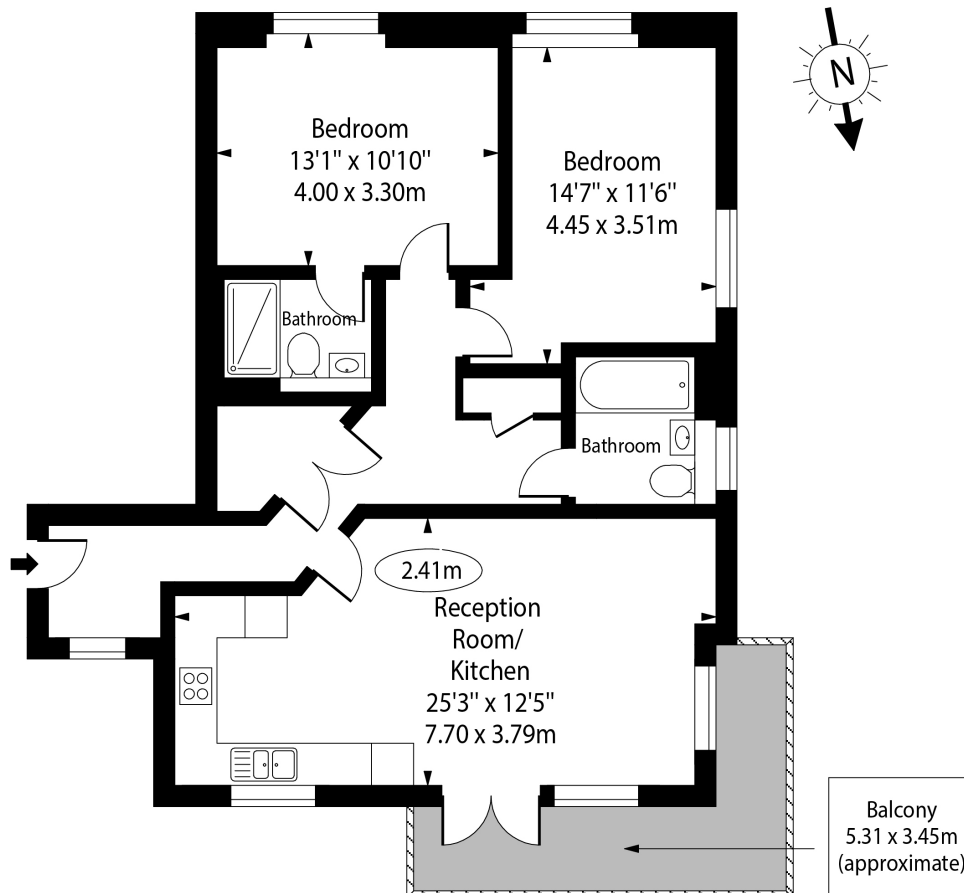
Features

- Ideal First Time Purchase
- Long Lease
- Immaculately Presented
- Two Double Bedrooms
- Two Bathrooms
- Modern Building
- First Floor Apartment
- Delightful Balcony
- One Allocated Parking Space
- 850 Sq Ft (78 Sq M) Of Internal Space



Ryder Court, Charles
Sevright Way, Mill Hill
, NW7

Ryder Court,
Millbrook Park, NW7



First Floor

Approx Gross Internal Area 850 Sq Ft - 78.96 Sq M

For Illustration Purposes Only - Not To Scale Floor Plan by www.nogaphotostudio.com Ref: No.48729

This floor plan should be used as a general outline for guidance only. Any intending purchaser or lessee should satisfy themselves by inspection, searches, enquiries and full survey as to the correctness of each statement. Any areas, measurements or distances quoted are approximate and should not be used to value a property or be the basis of any sale or let.