

Dorothy Walk

Warminster, BA12 8PH

COOPER
AND
TANNER



£250,000 Freehold

🚗 2 🛋️ 2 🚿 1 EPC E

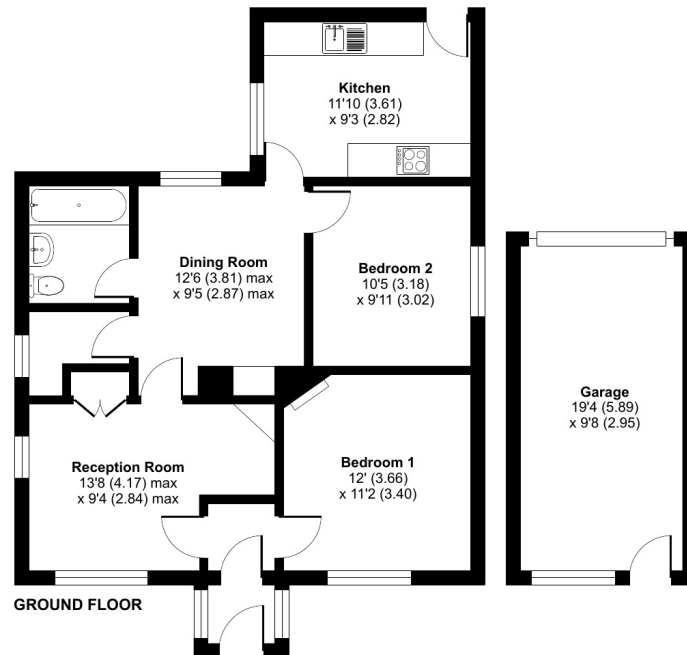
Description

Cash buyers only. A detached two bedroom bungalow situated within a good sized plot of approximately 0.2acre, in need of modernisation and updating. Planning permission has been granted to demolish the existing bungalow and a replacement dwelling and garage to be put in its place. 20/04401/FUL . The property is in a tucked away location with gardens, garage and parking. In brief the accommodation comprises entrance porch with a door into the inner hall, sitting room with feature fireplace, dining room, utility area, kitchen with door to the garden, two bedrooms and a bathroom. Internal viewing comes highly recommended.

Dorothy Walk, Warminster, BA12

Approximate Area = 928 sq ft / 86.2 sq m (includes garage)

For identification only - Not to scale



Floor plan produced in accordance with RICS Property Measurement Standards incorporating International Property Measurement Standards (IPMS2 Residential). © nichecom 2023. Produced for Cooper and Tanner. REF: 932490



Features

- Cash buyers only
- Detached bungalow in a sought after location
- Good size gardens
- Garage and driveway parking
- In need of modernisation and updating
- Two bedrooms
- Two reception rooms
- Kitchen
- No onward chain
- Planning permission granted for a replacement dwelling and garage

Local Information

- Council Tax Band C
- Tenure Freehold
- EPC Rating E

WARMINSTER OFFICE

Telephone 01985 215579

48-50, Market Place, Warminster, Wiltshire BA12 9AN

warminster@cooperandtanner.co.uk

**COOPER
AND
TANNER**

Important Notice: These particulars are set out as a general outline only for the guidance of intended purchasers and do not constitute, nor constitute part of, an offer or contract. All descriptions, dimensions, reference to condition and necessary permissions for use and occupation, warranties and other details are given without responsibility and any intending purchasers should not rely on the matters stated or representations of fact but must satisfy themselves by inspection or otherwise as to the correctness of each of them.

