

## Preston Road, Shepperton, TW17 0BG

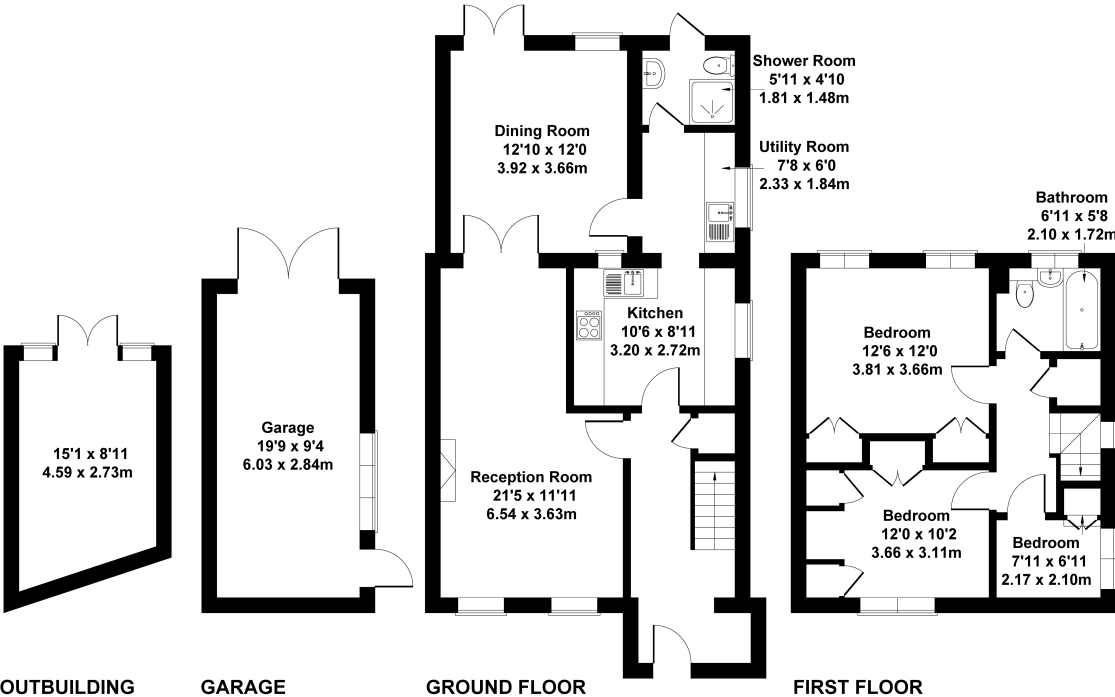
**Guide Price £400,000**



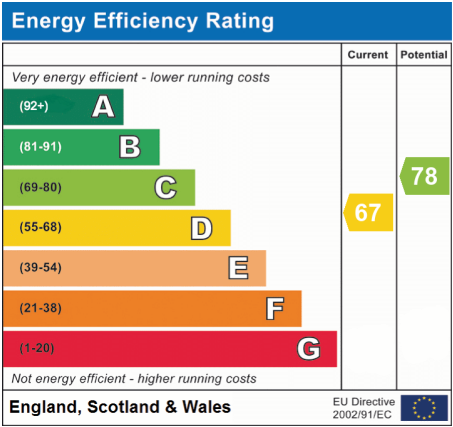
- No Onward Chain
- Close To School, Shops & Amenities
- Utility Room
- Off Street Parking
- Extended To The Ground Floor
- Modern Kitchen
- Detached Garage
- Good Size Rooms Throughout

Preston Road, Shepperton, TW17 0BG

Approximate Gross Internal Area  
Main House 1119 sq ft - 104 sq m  
Garage 183 sq ft - 17 sq m  
Outbuilding 118 sq ft - 11 sq m  
Total 1420 sq ft - 132 sq m



This floorplan is for guidance only and does not form part of an offer or contract.  
Buyers or tenants should verify all details through inspection, searches, and surveys.  
Measurements are approximate and should not be relied upon for valuation or transactions.  
Produced by Plan Portal.  
[www.evolveLondon.co.uk](http://www.evolveLondon.co.uk)



We have not tested the services or domestic appliances so we cannot verify that they are in working order. The buyer is advised to obtain verification from their solicitor or surveyor. There particulars form no part of any offer or contract and their accuracy cannot be guaranteed.