



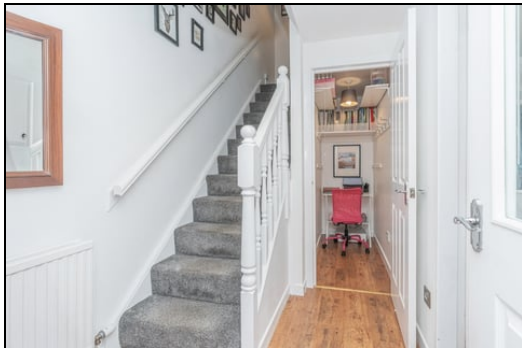
Offers Over £124,500
23 Bishop Avenue, Lochgelly, Fife, KY5 9EA

23 Bishop Avenue, Lochgelly, Fife, KY5 9EA

Delmor are delighted to be marketing this well presented mid terraced villa set in a much sought after location. Lochgelly has a great range of amenities including shopping, schooling, Lochgelly theatre and golf course. There is a train station and close links to the A92 for the commuter. The property briefly comprises of, on the ground floor - Entrance hallway with stairs leading to the first floor and cupboard which is currently being utilised as an office. Bright lounge with archway through to the dining kitchen. Modern dining kitchen with floor and wall mounted units incorporating gas hob with electric oven below and overhead extractor fan. Washing machine and American style fridge/freezer. Ample space for dining table and chairs. First floor has a top landing giving access to two double bedrooms both of which have ample storage. Modern bathroom comprising of bath with overhead shower and screen and vanity unit housing the wash hand basin and WC. The front gardens are open and laid to lawn with a parking space. The rear gardens are enclosed and laid to lawn and chips. There is a decked patio area. The property also benefits from gas central heating and double glazing. Early viewing is essential on this move in condition property.

Ground Floor

Entrance Hallway



Lounge



4.19m x 3.3m (13' 9" x 10' 10")

Dining Kitchen

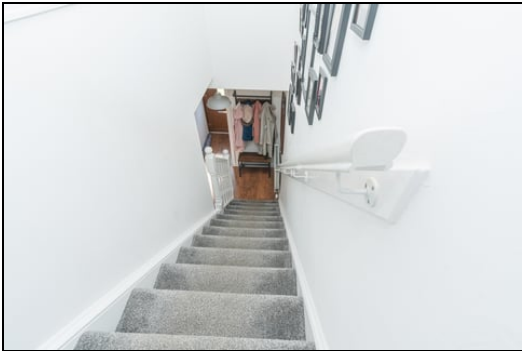
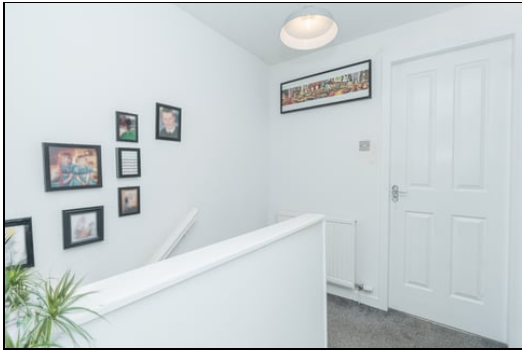
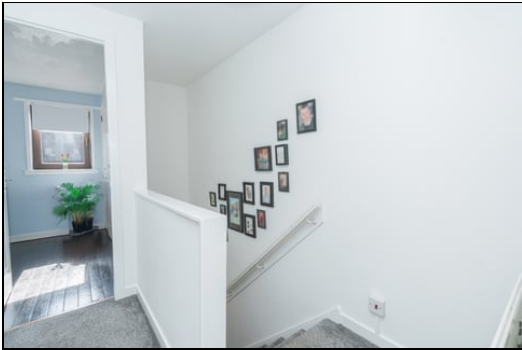


5.28m x 2.78m (17' 4" x 9' 1")

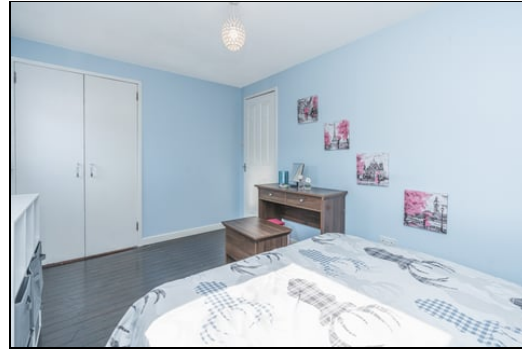
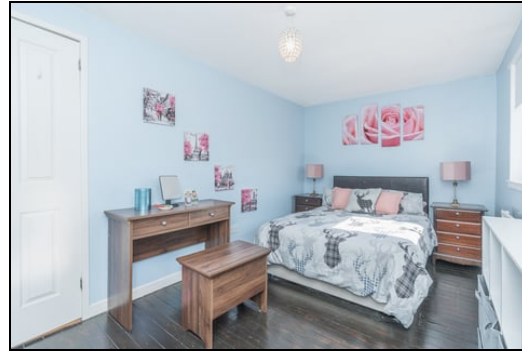
First Floor



Top Hallway

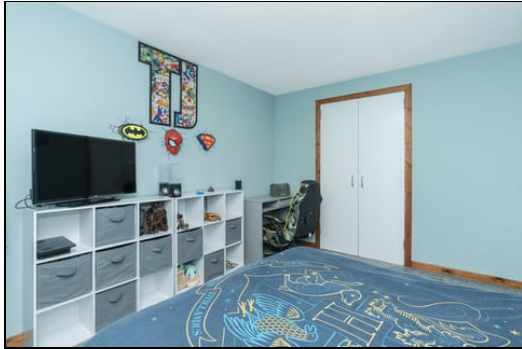


Bedroom



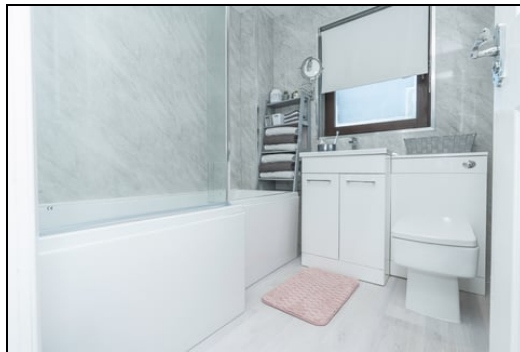
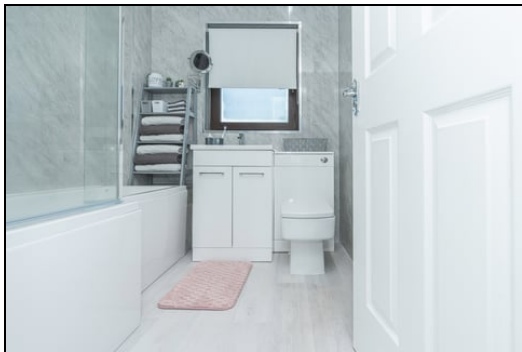
4.25m x 2.64m (13' 11" x 8' 8")

Bedroom



3.58m x 3.2m (11' 9" x 10' 6")

Bathroom



2.01m x 1.97m (6' 7" x 6' 6")

Gardens

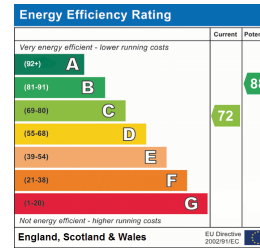


Extras

All floor coverings. Gas hob, electric oven and extractor fan. American style fridge/freezer and washing machine.

SONIC TAPE

All measurements have been taken using a sonic tape measure and therefore, may be subject to a small margin of error.



MEASUREMENTS

All measurements are approximate.

APPLIANCES/SERVICES

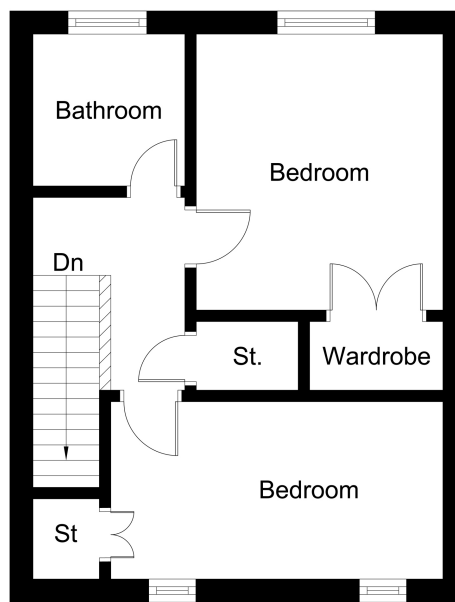
The mention of any appliances and/or services within these Sales Particulars does not imply they are in fully working order.

MORTGAGE & FINANCIAL ADVICE

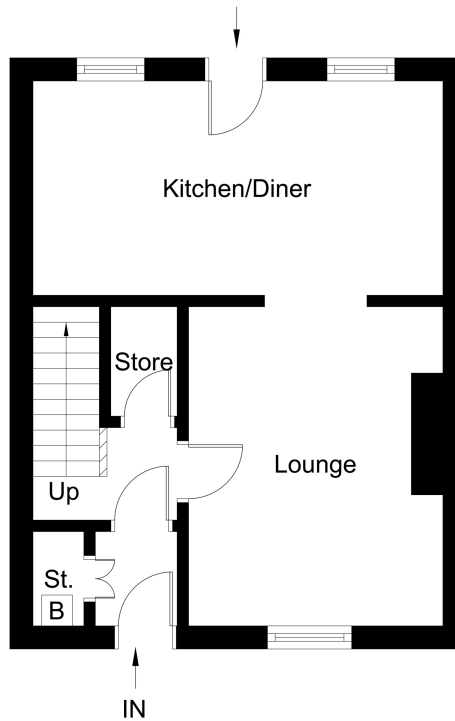
Qualified Mortgage and Financial Consultants can provide you with up to the minute information on many of the rates available. To arrange an appointment telephone this office. **YOUR HOME IS AT RISK IF YOU DO NOT KEEP UP REPAYMENTS ON A MORTGAGE OR OTHER LOANS SECURED ON IT.** Full written quotation available on request. A suitable life policy may be required. Loans are subject to status. Minimum age 18.

FREE VALUATION

How much is your property worth?. We can provide you with the answer. We offer a free valuation service without cost or obligation. Please call this office for an appointment.



First Floor



Ground Floor