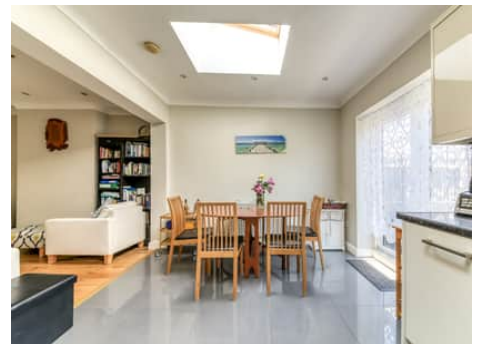


Truuli



St Olaves Walk, London, SW16 5QQ

£525,000 Freehold

- Arranged over three floors
- Three double bedroom family home
- Ground floor WC
- Two bathrooms one is an en-suite
- Set between Norbury and Streatham Common stations
- Modern and extended kitchen

Southbridge Place, Surrey, CR0 4HA

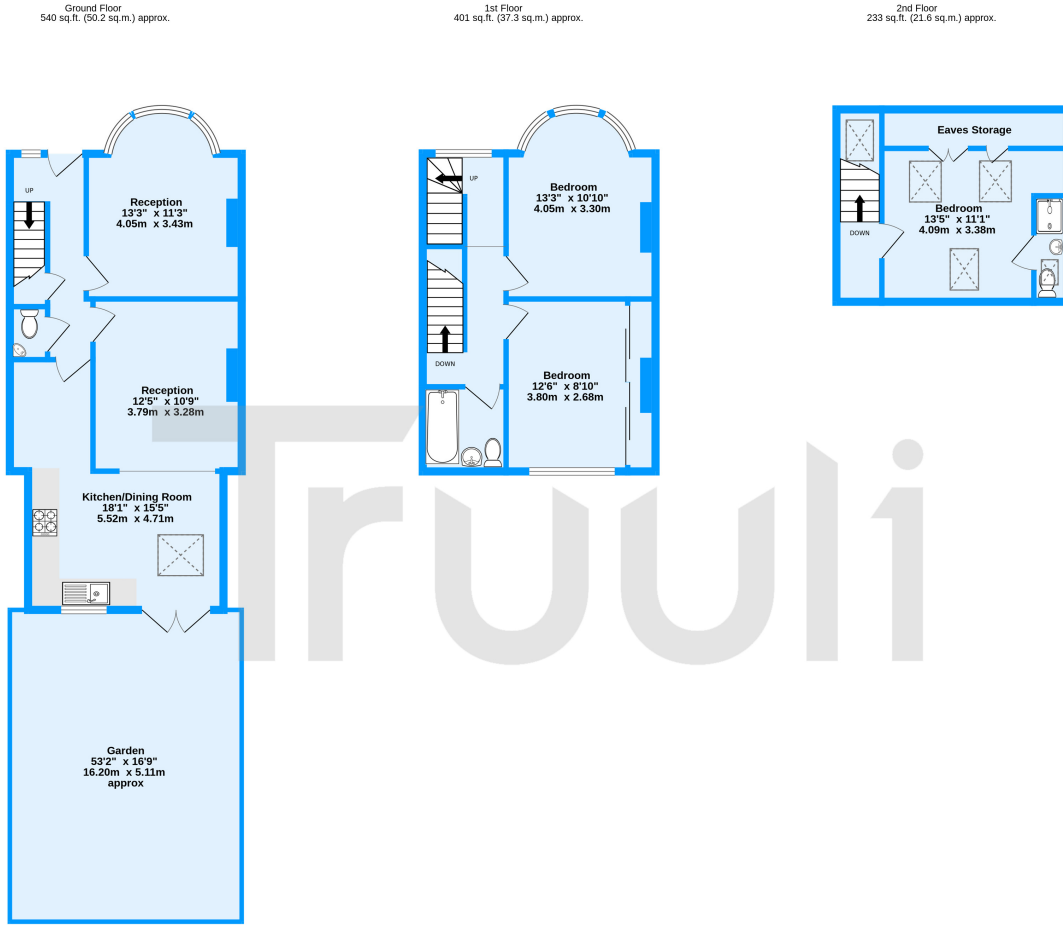
Tel: 0330 043 0002

Email: save@truuli.co.uk Web: www.truuli.co.uk

St Olaves Walk, London, SW16 5QQ

£525,000 Freehold

A three-bedroom freehold house well positioned in an ever-desirable location in Streatham Common. The property offers good living space internally, three good-sized bedrooms and a sizeable garden.



truuli

St Olaves Walk, Streatham, SW16

TOTAL FLOOR AREA : 1174 sq.ft. (109.1 sq.m.) approx.
Measurements are approximate. Not to scale. Illustrative purposes only
Made with Metropix ©2023

Energy Efficiency Rating		Current	Potential
Very energy efficient - lower running costs			
(92-100)	A		
(81-91)	B		86
(69-80)	C		
(55-68)	D	66	
(39-54)	E		
(21-38)	F		
(1-20)	G		
Not energy efficient - higher running costs			
England, Scotland & Wales		EU Directive 2002/91/EC	

