

FOR SALE

Heathfield Road,
Acton, W3

Semi-Detached House
Mill Hill Conservation Area

£1,450,000 fh

5  2  2 

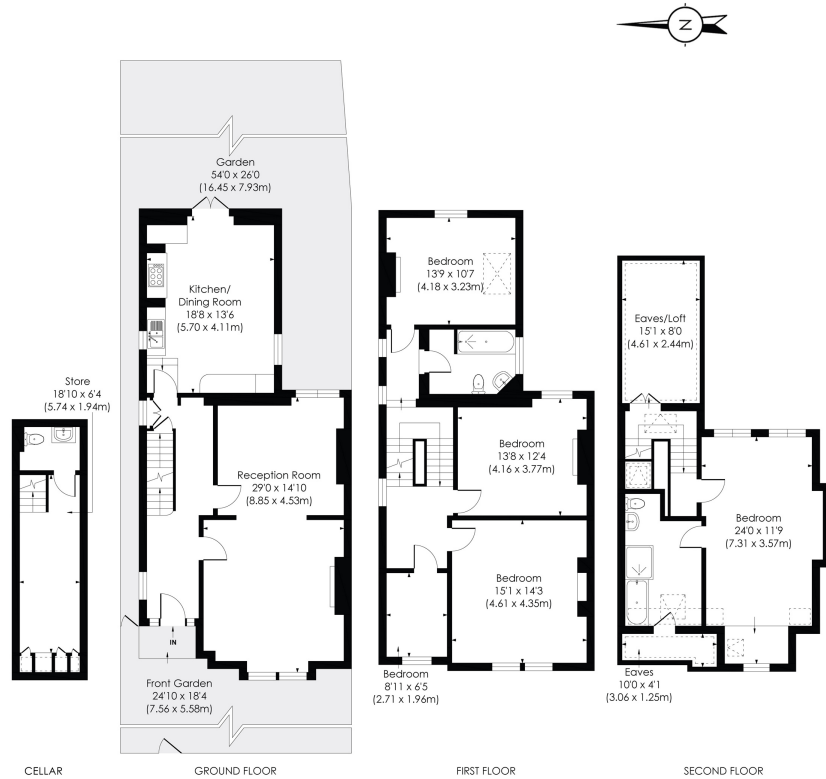


**horton
andgarton**

SALES / LETTINGS / PROPERTY MANAGEMENT

hortonandgarton.co.uk | Sales 020 3989 6464 | Lettings 020 3989 5454
161 Chiswick High Road, London, W4 2DT





Semi-detached family home | 57' Garden | 2225 Sq' - 224.92 SqM | EPC rating E | Five bedrooms - Two bathrooms | Mill Hill Conservation Area



hortonandgarton.co.uk
 Sales 020 3989 6464
 Lettings 020 3989 5454

161 Chiswick High Road, London, W4 2DT



HEATHFIELD ROAD, W3
 Approx. Gross Internal Floor Area
2421 Sq' / 224.92 SqM (Including Reduced Height Areas)
2225 Sq' / 206.67 SqM (Excluding Reduced Height Areas)

© Pixangle Property Marketing Ltd. info@pixangle.com Tel: 0208 870 2118

This floor plan has been prepared for the purpose of illustration only in accordance with the latest RICS code of measuring practice and is not to scale. All measurements and areas are approximate and whilst every effort has been made to ensure the accuracy of the plan contained here, no responsibility is taken for any error, omission or misstatement.