



HILTON KING & LOCKE

SPECIALISTS IN PROPERTY



4 Old Bakery Court, IVER, Buckinghamshire. SL0 9NP.

£300,000 Freehold

Charming 1-Bedroom House in the Heart of Iver High Street – No Chain

A well-presented one-bedroom house located in the popular Iver High Street, offering a perfect blend of comfort and convenience. This light and airy property is ideal for first-time buyers or those looking to downsize, with no onward chain. The accommodation comprises a spacious, bright living room with ample natural light and under-the-stairs storage.

The fully fitted kitchen offers a range of eye and base-level units, perfect for cooking and entertaining. The double bedroom



features built-in wardrobe space, providing a practical and tidy living area. A family bathroom completes the internal layout.

Externally, the property benefits from one allocated parking space, offering added convenience in this sought-after location. The house is within easy reach of local amenities, including shops, cafes, and schools, and is just a short walk from the Crossrail station, making commuting a breeze. This property presents an excellent opportunity for those seeking a home in a prime location with excellent transport links.




Important Notice

Particulars: These particulars are not an offer or contract, nor part of one. You should not rely on statements by Hilton King & Locke Ltd in the particulars or by word of mouth or in writing as being factually accurate about the property, its condition or its value. Hilton King & Locke Ltd does not have any authority to make any representations about the property, and accordingly any information given is entirely without responsibility on the part of the agents, seller(s) or lessor(s).

Photographs etc: The photographs show only certain parts of the property as they appeared at the time they were taken. Areas, measurements and distances given are approximate only.



23 High Street
Iver Buckinghamshire SL0 9ND

Tel: 01753 650033 
iver@hklhome.co.uk

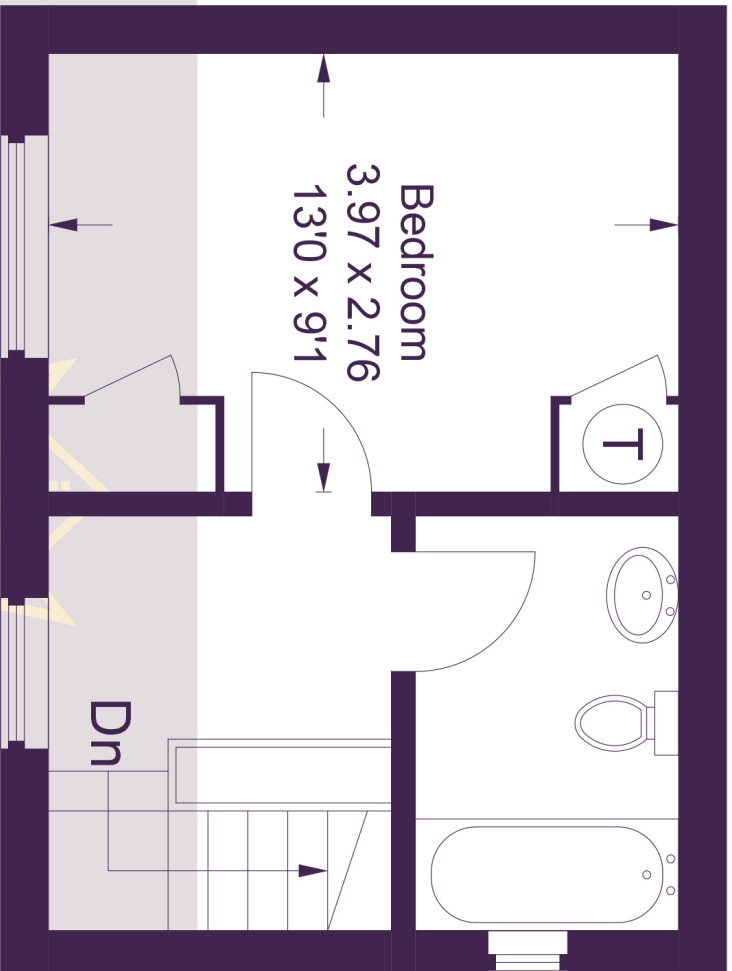
4 Old Bakery Court

Approximate Gross Internal Area

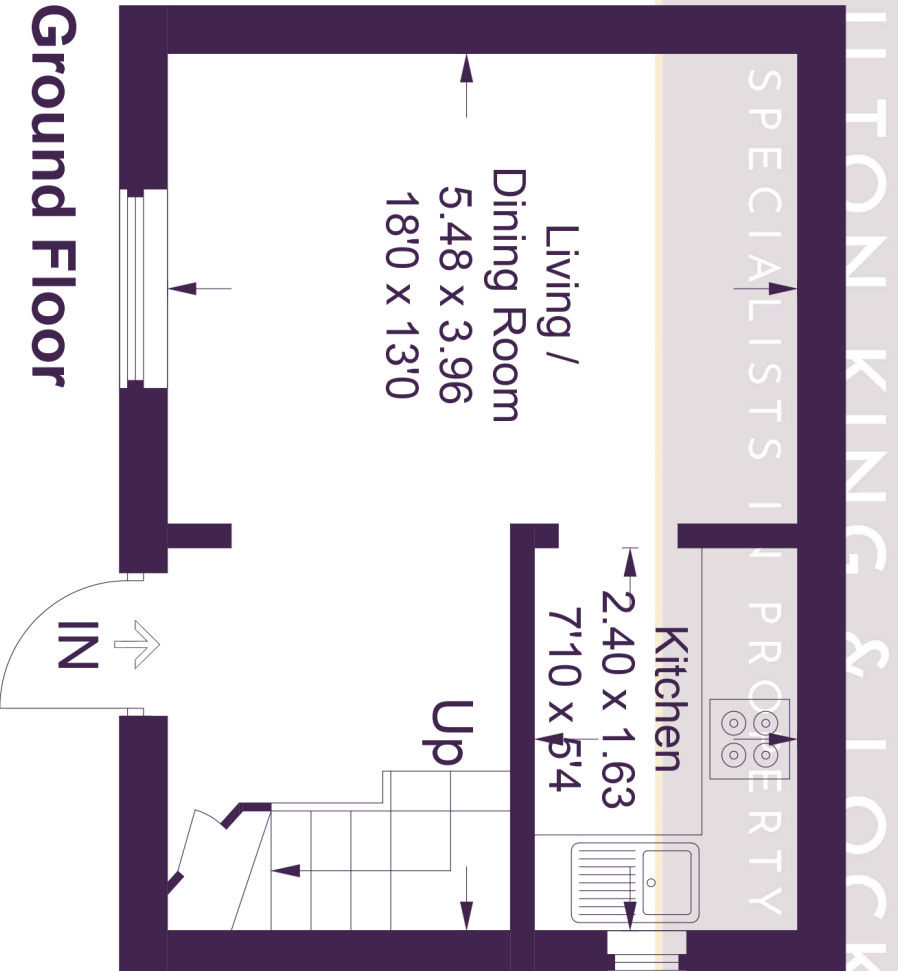
Ground Floor = 21.9 sq m / 236 sq ft

First Floor = 21.7 sq m / 233 sq ft

Total = 43.6 sq m / 469 sq ft



First Floor



Ground Floor

This plan is for layout guidance only. Not drawn to scale unless stated. Windows and door openings are approximate. Whilst every care is taken in the preparation of this plan, please check all dimensions, shapes and compass bearings before making any decisions reliant upon them.