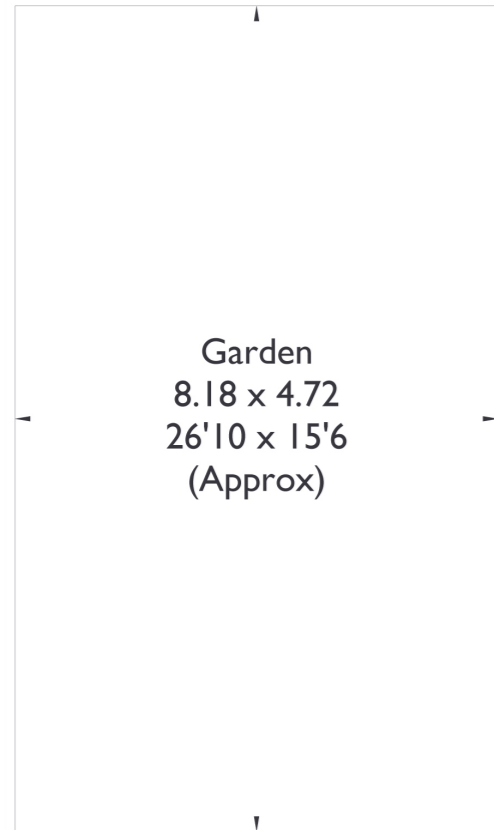
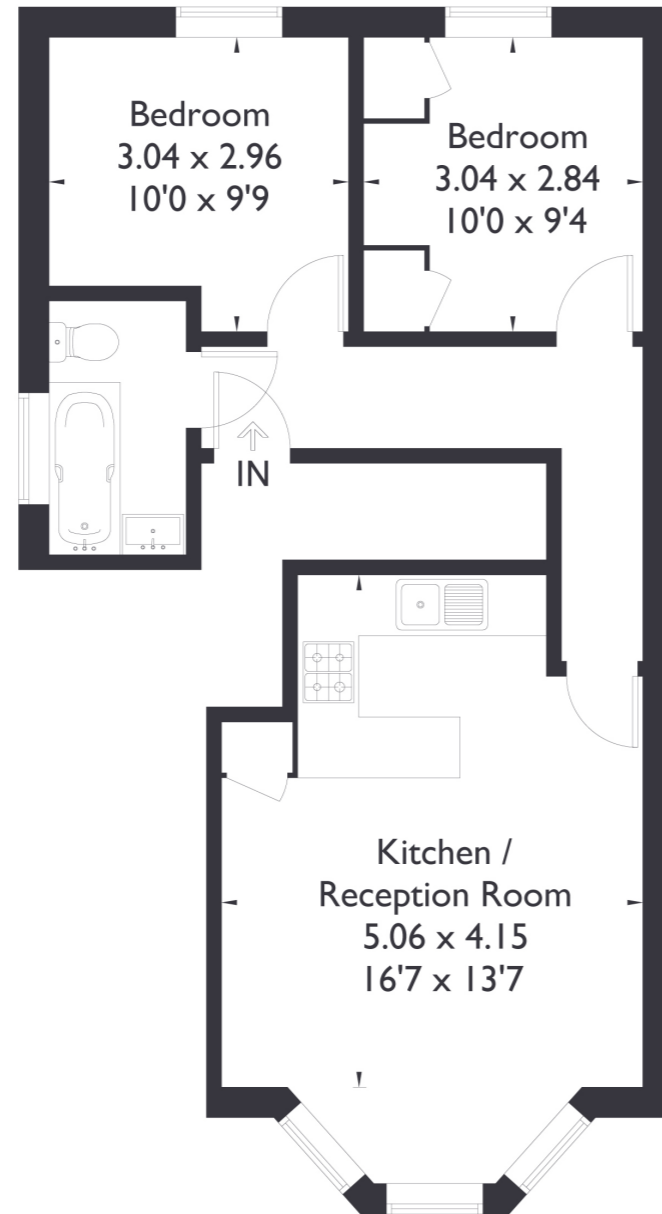


Churchfield Road, W13

Approximate Floor Area = 50 sq m / 538 sq ft



**Garden**



**Ground Floor**



**2 BEDROOM FLAT**

**Churchfield Road, W13**  
**£485,000**

Welcome to this charming raised ground floor two bedroom, one bathroom flat, ideally situated in a prime location. Upon entering, you are welcomed by a spacious open-plan kitchen and living area, perfect for modern living and entertaining guests. The property benefits from private garden, providing a serene outdoor space for relaxation and recreation.

**FEATURES**

- Share Of Freehold
- Two Bedrooms
- One Bathroom
- Kitchen/Living Space
- Private Garden
- Off-Street Parking
- EPC Rating C



2 BEDROOM FLAT

## Churchfield Road, W13

The flat features two bedrooms and an open plan kitchen/living space.

With natural light, the interior spaces feel bright and airy, creating a welcoming atmosphere throughout. Conveniently located, this property offers easy access to West Ealing Station, including the Elizabeth Line, facilitating effortless commuting options. Residents can enjoy the vibrant amenities of Ealing Broadway. Additionally, the property is within close proximity to reputable schools, ensuring quality education options for families. EPC Rating C.

