

## Chertsey Road, Shepperton, TW17 9NX

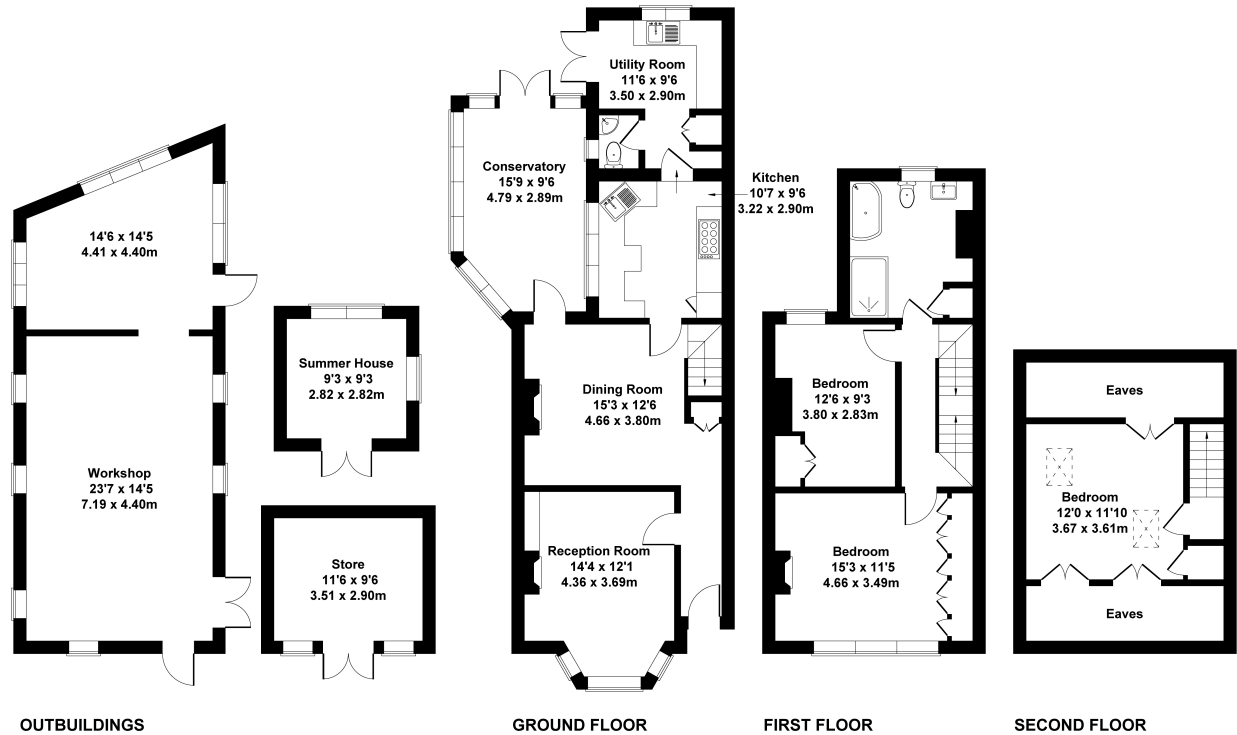
**Guide Price £625,000**



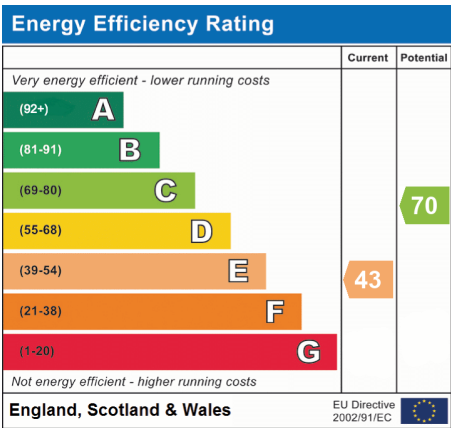
- Character Fireplaces
- Potential To Extend (STPP)
- Three Double Bedrooms
- Downstairs WC
- Large Rear Garden
- Ample Off Street Parking
- Outbuildings
- Excellent Condition Throughout

Range Villas, Chertsey Road, Shepperton, TW17

Approximate Gross Internal Area  
Main House 1432 sq ft - 133 sq m  
Outbuildings 710 sq ft - 66 sq m  
Total 2142 sq ft - 199 sq m



This floorplan is for guidance only and does not form part of an offer or contract.  
Buyers or tenants should verify all details through inspection, searches, and surveys.  
Measurements are approximate and should not be relied upon for valuation or transactions.  
Produced by Plan Portal.  
[www.evolve.london.co.uk](http://www.evolve.london.co.uk)



We have not tested the services or domestic appliances so we cannot verify that they are in working order. The buyer is advised to obtain verification from their solicitor or surveyor. These particulars form no part of any offer or contract and their accuracy cannot be guaranteed.