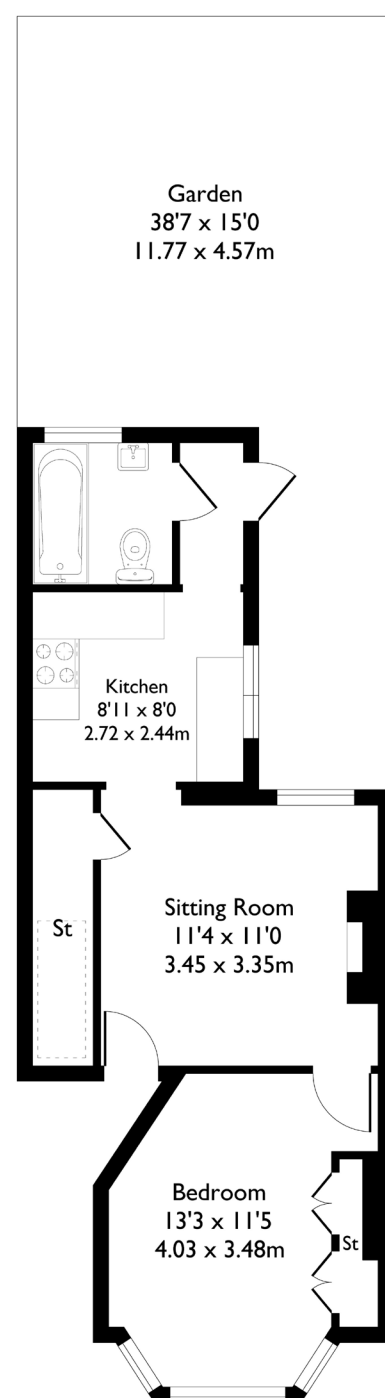


Westfield Road, London, W13

Approximate Floor Area = 40.1 sq m / 432 sq ft



Ground Floor



1 BEDROOM FLAT

Westfield Road, W13

£450,000

A well-presented one-bedroom, one-bathroom ground floor garden flat offering bright and comfortable living in a sought-after location. The property opens into a welcoming living area, leading to a spacious double bedroom with a charming bay window that fills the room with natural light.

A separate kitchen and living space ensures practicality and comfort, while a bathroom is conveniently located at the rear of the property.

FEATURES

- One Bedroom
- One Bathroom
- Separate Kitchen & Dining
- Northfields Station/ West Ealing (Elizabeth Line)
- West Ealing/Northfields Avenue Amenities
- Private Garden
- EPC Rating D



1 BEDROOM FLAT

Westfield Road, W13

The flat also benefits from direct access to a private rear garden, creating a peaceful retreat and perfect space for outdoor entertaining.

There is also potential to extend (subject to planning permission), providing an excellent opportunity to add further value.

Situated close to Northfields' vibrant amenities and within easy reach of both Northfields and West Ealing stations, the property offers excellent connectivity for commuters and access to local shops, cafés, and green spaces.

EPC Rating D.

