



5 Langley Broom, Slough, Berkshire. SL3
8NB.

£750,000

t: 01753 593888

w: www.flatmans.com

e: langleysales@flatmans.com

Features of Interest

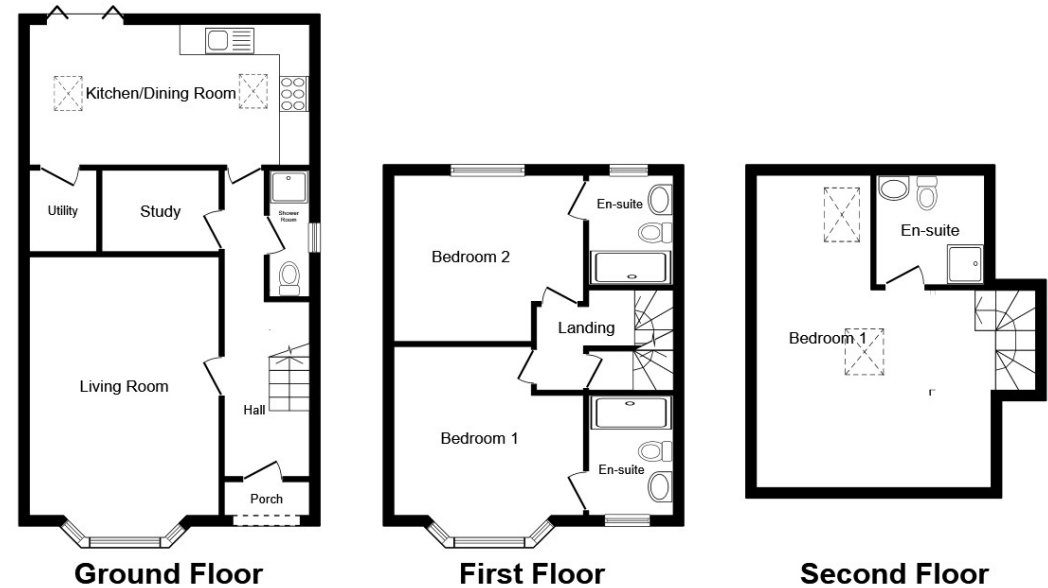
- *New Home*
- Three Bedroom Detached
- Ready to Move In
- No Onward Chain
- Sought After Location
- Exceptional Living Space
- Expertly Finished Family Home
- Conveniently located for Langley Grammar and Upton Court Grammar Schools
- Easy Access to Heathrow Airport, M4 & M25 Motorways
- Close to Langley Railway Station (Crossrail)

Description

Offered to the market is this NEW BUILD, ready to move in with No onward chain, built by EXPERT PROPERTY DEVELOPERS with HIGH SPEC appliances, offering an EXCEPTIONAL level of living space throughout. DESIRABLE LOCATION, close to an array of Langley's schools and close to multiple TRANSPORT LINKS including Langley Railway Station (Crossrail) and both M4 & M25 Motorway Networks.

The property will benefit from two off-street parking spaces and private, enclosed rear gardens.

Call now to register your interest and avoid missing out on this incredible opportunity.



This plan is for illustration purposes only and may not be representative of the property. Plan not to scale. Powered by PropertyBox