



**diamond**  
PROPERTIES



**29 Autumn Avenue, Leeds, West Yorkshire. LS6 1RE.**

**£1,108 Freehold**

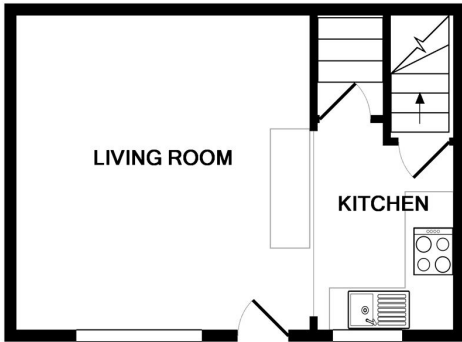
- 3 double bedrooms
- Open plan kitchen lounge area
- 1 bathroom
- Lots of local amenities
- Available 01.07.2020
- 85PPPW

# 29 Autumn Avenue, Leeds, West Yorkshire. LS6 1RE.

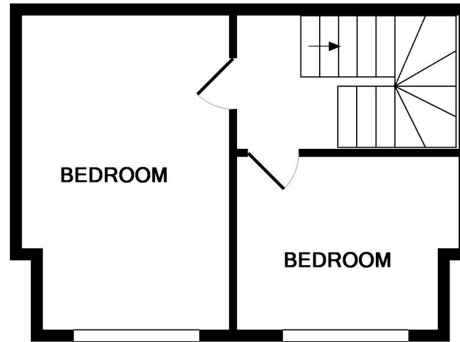
## £1,108 Freehold

£85PPPW - 3 bedrooms - Available 01.07.2020

Diamond Properties are pleased to offer this well presented three bedroom end of terrace property in Hyde Park. The property is walking distance to the University, Leeds City Centre, Headingley and Burley, making it ideal for students or professionals. The property briefly comprises an open plan kitchen/lounge, three double bedrooms and well presented bathroom. On street parking is available and it has lots to local amenities near by.



GROUND FLOOR

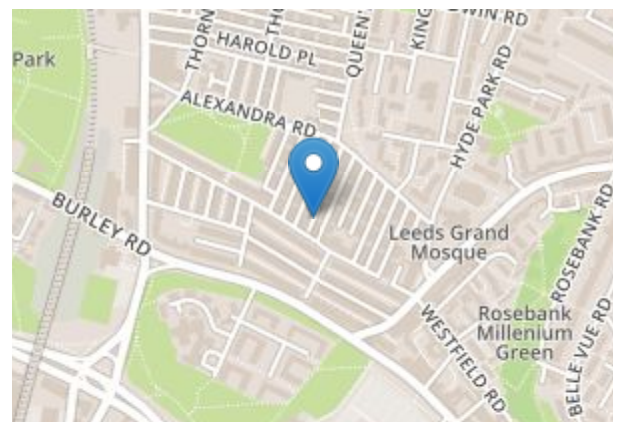


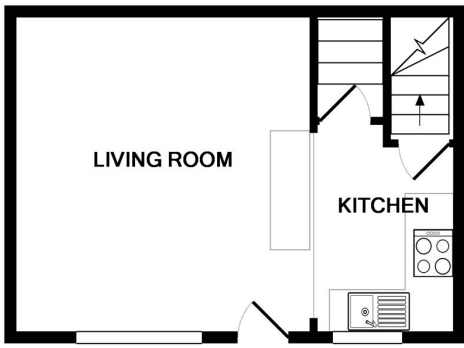
2ND FLOOR



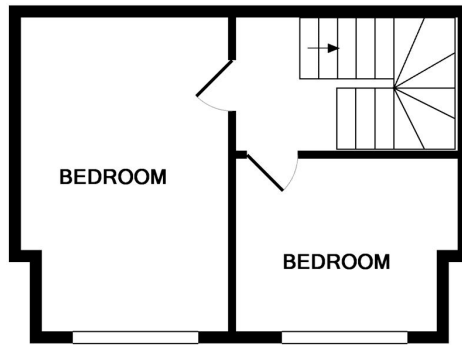
1ST FLOOR

Whilst every attempt has been made to ensure the accuracy of the floor plan contained here, measurements of doors, windows, rooms and any other items are approximate and no responsibility is taken for any error, omission, or mis-statement. This plan is for illustrative purposes only and should be used as such by any prospective purchaser. The services, systems and appliances shown have not been tested and no guarantee as to their operability or efficiency can be given  
Made with Metropix ©2014

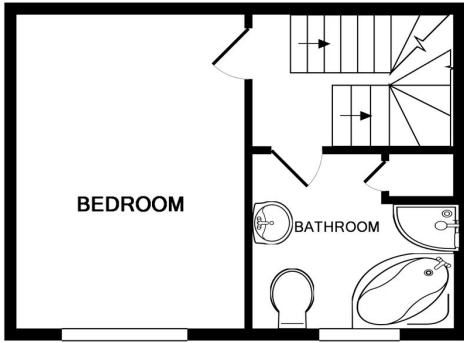




GROUND FLOOR



2ND FLOOR



1ST FLOOR

Whilst every attempt has been made to ensure the accuracy of the floor plan contained here, measurements of doors, windows, rooms and any other items are approximate and no responsibility is taken for any error, omission, or mis-statement. This plan is for illustrative purposes only and should be used as such by any prospective purchaser. The services, systems and appliances shown have not been tested and no guarantee as to their operability or efficiency can be given  
Made with Metropix ©2014