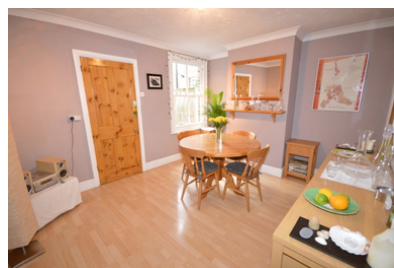


152 Moulsham Street,  
Chelmsford, Essex,  
CM2 0LD  
01245 266980  
lettings@mccartneyestateagents.co.uk

**Mc Cartney**  
Sales & Lettings

LET



Nursery Road, Chelmsford

£1,150 pcm

- Two Bedroom House
- Close to Local Amenities and Schools
- Period Property
- Two Reception Rooms
- Minutes From Moulsham Street
- Heart of Old Moulsham

**HEART OF OLD MOULSHAM** - We offer this **TWO BEDROOM** house situated in the heart of **OLD MOULSHAM**. Offering **TWO RECEPTION ROOMS** this exception period property is positioned close to **LOCAL SCHOOLS** and **AMENITIES**. The **CITY CENTRE** is just a short walk away with its cast array of shops and **MAINLINE STATION**. Unfurnished. Available 19th January

