

01992641500

[www.christopherstokes.co.uk](http://www.christopherstokes.co.uk)

10 Newnham Parade, College Road, Cheshunt,  
Hertfordshire, EN8 9NU

christopher  
stokes



## Moreton Close, Cheshunt, Hertfordshire EN7

**£475,000 Freehold**

- Catchment area for Flamstead End 'outstanding' Primary School
- Driveway for two cars
- Spacious accommodation
- Two reception rooms
- Prestigious West Cheshunt location
- Three bedroom family home
- Large modern family bathroom
- Low maintenance attractive garden

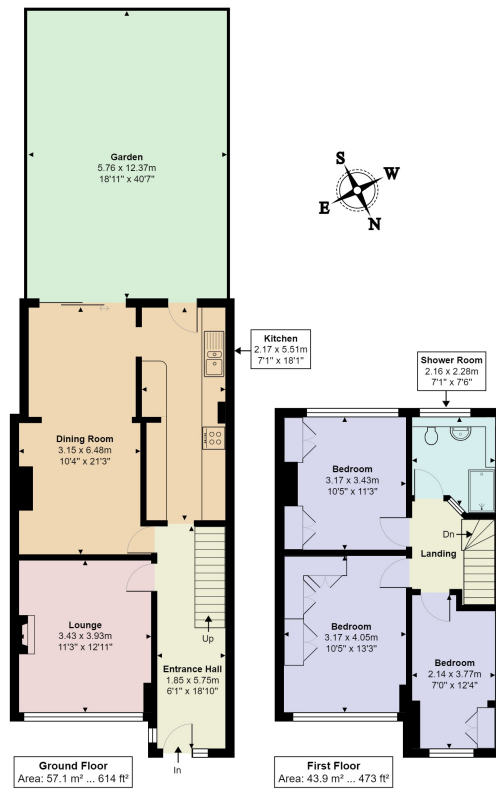
**\*EXTENDED FAMILY HOME IN FANTASTIC DECORATIVE ORDER - INTERNAL VIEWING HIGHLY RECOMMENDED\***

Presenting this extended three bedroom terraced house located in highly desirable West Cheshunt. The property features three double bedrooms, two large receptions, modern kitchen as well as large family bathroom. Moreton Close is in extremely good decorative order throughout, having been well maintained by the current owners. The south facing garden offers attractive low maintenance outdoor space for the family to enjoy.





These particulars, whilst believed to be accurate are set out as a general outline only for guidance and do not constitute any part of an offer or contract. Intending purchasers should not rely on them as statements or representation of fact, but must satisfy themselves by inspection or otherwise as to their accuracy. We have not carried out a detailed survey nor tested the services, appliances and specific fittings. Room sizes should not be relied upon for carpets and furnishings. The measurements given are approximate. No person in this firm's employment has the authority to make or give any representation or warranty in respect of the property.



**Moreton Close, Cheshunt, EN7 6LX**

Total Area: 101.0 m<sup>2</sup> ... 1087 ft<sup>2</sup> (excluding garden)

All measurements are approximate and for display purposes only