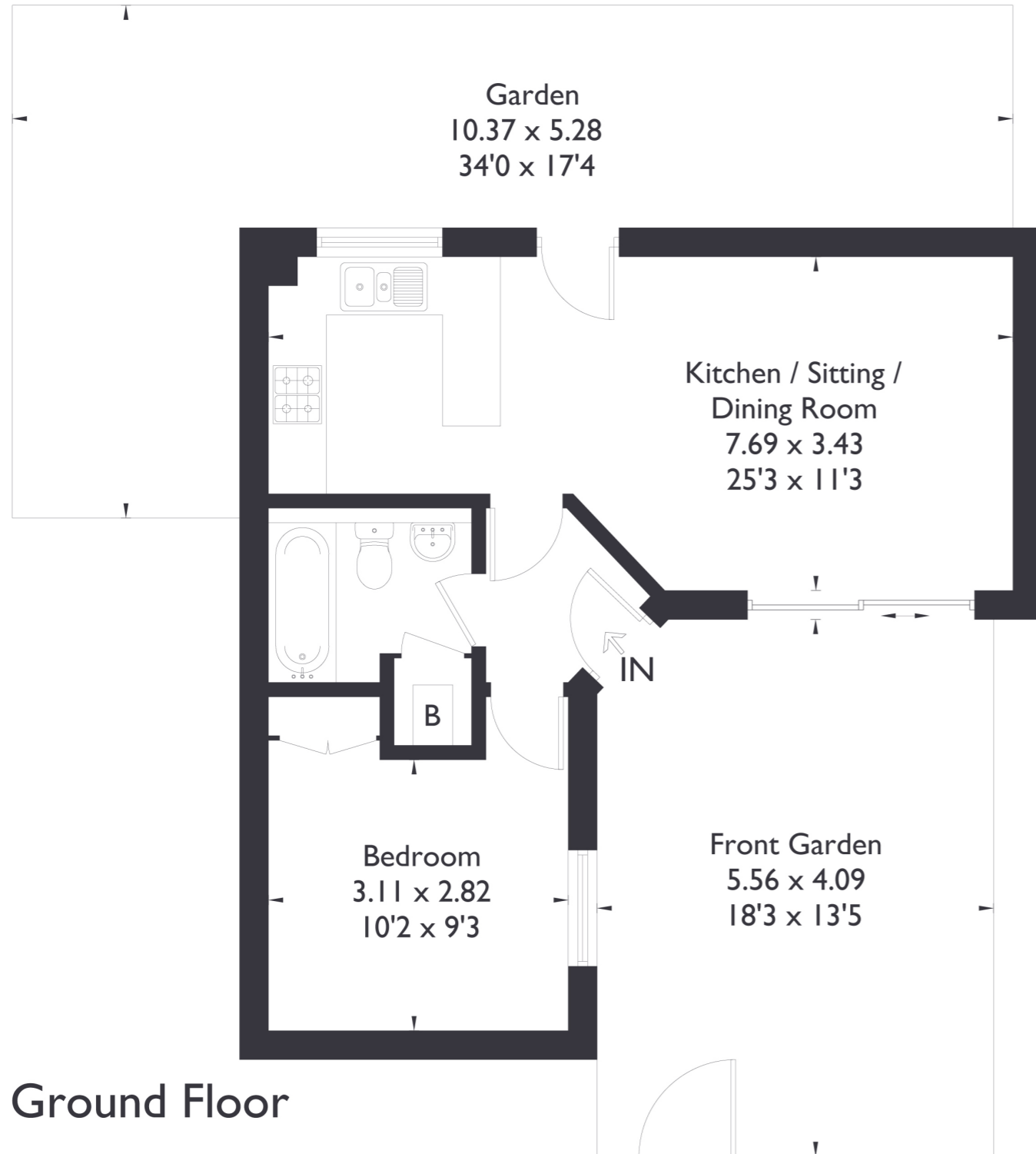


**Cheviot Close, Harlington Hayes, UB3 5LR**

Approximate Floor Area = 41.5 sq m / 447 sq ft



**Ground Floor**



**1 BEDROOM BUNGALOW**

**Cheviot Close, UB3**

**£324,950**

Welcome to this one bedroom, one bathroom bungalow in the heart of Harlington.

The property offers an inviting open-plan kitchen, dining, and living space, complemented by a spacious double bedroom and modern bathroom.

**FEATURES**

- Leasehold Bungalow
- One Bedroom
- One Bathroom
- Heathrow Airport Nearby
- Local Amenities Nearby
- Fantastic Transport Links
- EPC Rating F



1 BEDROOM BUNGALOW

# Cheviot Close, UB3 £324,950

Enjoy the added bonus of both a front and rear garden, perfect for relaxing or entertaining.

Ideally situated close to Heathrow Airport and Bath Road, this home benefits from excellent local amenities and fantastic transport links, making it a wonderfully connected and convenient place to live.

EPC Rating F.

