



**1 Holme Cottages  
Ravensworth  
Richmond  
North Yorkshire  
DL11 7EZ**

**Offers in Excess of £417,000**

**bettermove**

## Richmond

Bettermove are proud to present this 4 bedroom detached house in the sought after area of Ravensworth.

The property benefits from double glazing, oil fired central heating throughout and has ample off street parking available via the gated driveway and a detached garage. The council tax band is E.

The interior of this beautifully presented property comprises two spacious reception rooms, a large modern fitted kitchen, shower room and utility room on the ground floor. The first floor consists of four double bedrooms and the family bathroom. The exterior boasts a large garden with a summerhouse, perfect for enjoying the summer months.

Located in the popular village of Ravensworth, the property is close to a range of amenities, including shops, restaurants and pubs. Excellent transport connections can be found from the A66 and many local bus routes.

This exciting opportunity should not be missed! All enquiries can be made through Bettermove on 0330 004 0050.

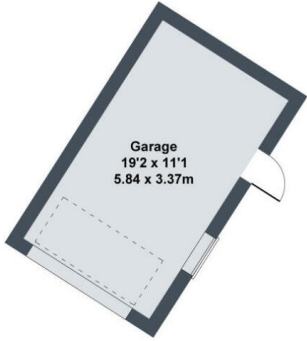
You can secure the purchase today by paying an exclusivity fee of £1,000 which gives you the rights to purchase within a given timeframe.

Paying this fee ensures that the seller takes their property off the market and reserves it exclusively for you, therefore eliminating the risk of gazumping and aborted costs.

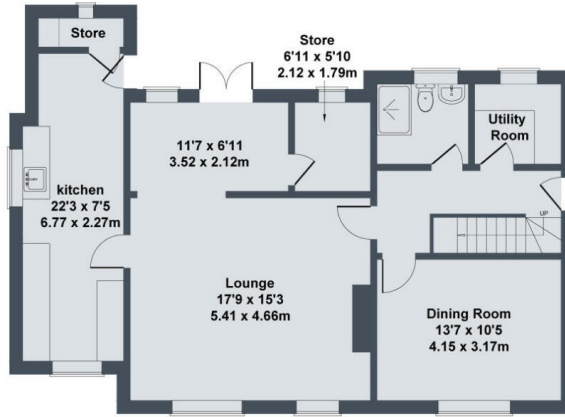
The exclusivity fee is returned to you upon successful completion of the property.



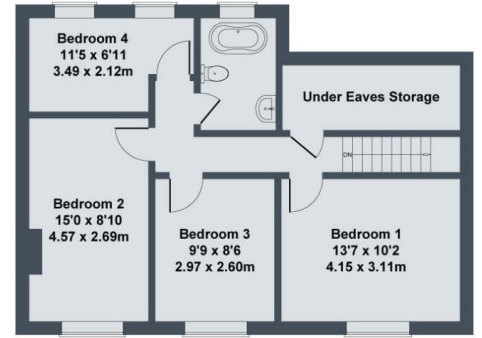
## Holme Cottage, Ravensworth



GARAGE



GROUND FLOOR



FIRST FLOOR

Energy Efficiency Rating		
	Current	Potential
<i>Very energy efficient - lower running costs</i>		
(92+) <b>A</b>		
(81-91) <b>B</b>		
(69-80) <b>C</b>		73
(55-68) <b>D</b>		
(39-54) <b>E</b>	40	
(21-38) <b>F</b>		
(1-20) <b>G</b>		
<i>Not energy efficient - higher running costs</i>		
<b>England, Scotland &amp; Wales</b>	EU Directive 2002/91/EC	



20-22 Bridge End, Leeds, LS1 4DJ  
t: 0330 004 0050 e: hello@bettermove.co.uk  
[www.bettermove.co.uk](http://www.bettermove.co.uk)