



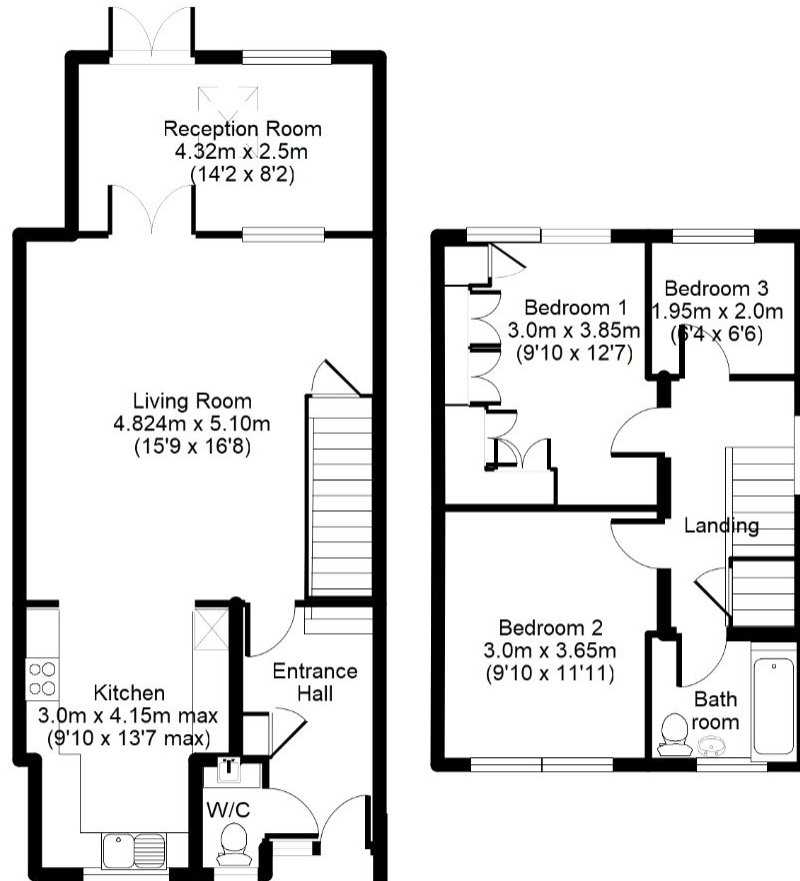
Redmayne Close, CAMBERLEY, GU15 1RZ

PRICE £375,000 Freehold

**\*Check out the virtual tour!!\***

An extended semi detached property situated in a quiet cul-de-sac on the ever popular Heatherside development. There are a number of local schools within walking distance including Heather Ride, Ravenscote & Tomlinscote. Accommodation comprises three bedrooms, spacious living room which has been opened up into the extended and re-fitted kitchen and a separate dining room. Further benefits include a cloakroom, family bathroom, Upvc double glazing and gas central heating. Outside to the rear is a sunny aspect garden with rear access and to the front there are a number of communal parking spaces. There is also a single garage located in a nearby block.

**Jigsaw**   
**Estates Limited**



Approx Total Floor Area:  
91 Sq M = 979 Sq Ft

Floorplan is for illustration purposes only.  
All measurements are approximate and should be verified.

- THREE BEDROOMS
- EXTENDED
- LIVING ROOM
- DINING ROOM
- OPEN/PLAN AND RE-FITTED KITCHEN
- CLOAKROOM
- FAMILY BATHROOM
- REAR GARDEN
- GARAGE
- CLOSE TO LOCAL SCHOOLS
- CLOSE TO LOCAL SHOPS

#### Energy Efficiency Rating

	Current	Potential
Very energy efficient - lower running costs		
(92 to 100) <b>A</b>		
(81 to 91) <b>B</b>		85
(69 to 80) <b>C</b>	73	
(55 to 68) <b>D</b>		
(39 to 54) <b>E</b>		
(21 to 38) <b>F</b>		
(1 to 20) <b>G</b>		
Not energy efficient - higher running costs		
England, Wales & N.Ireland	EU Directive 2002/91/EC	

