

# FOR SALE

---

Benbow Road,  
Hammersmith, W6

---

Flat  
Brackenbury Village

---

£625,000 sh of fh

---

2  1  1 

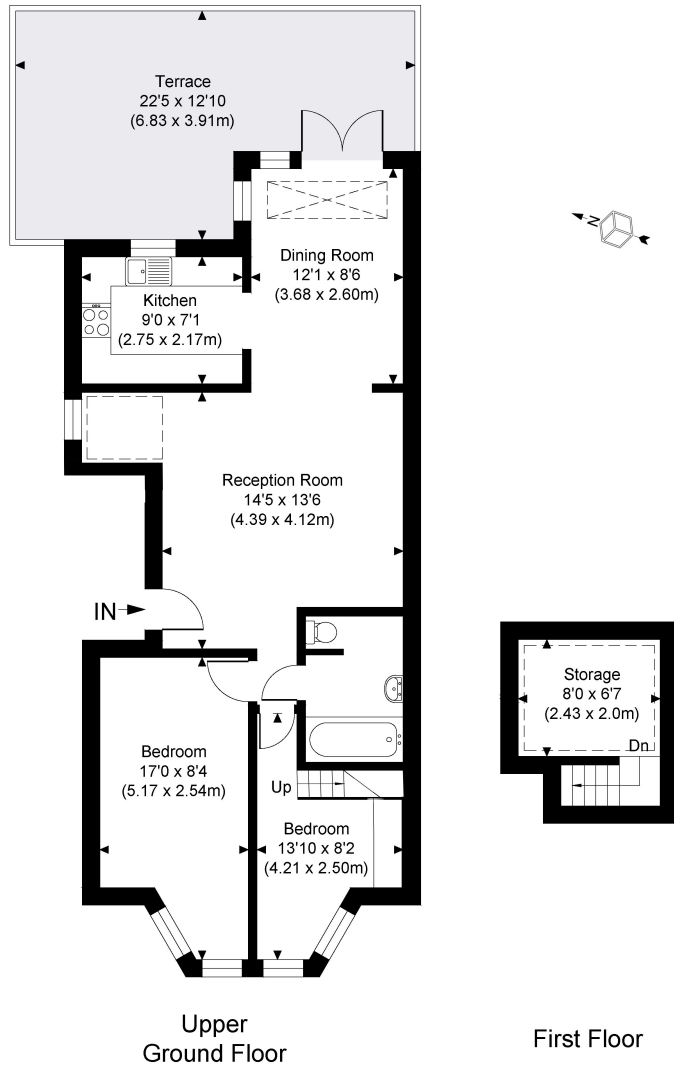


**horton  
andgarton**

SALES / LETTINGS / PROPERTY MANAGEMENT

hortonandgarton.co.uk | Sales 020 8819 0510 | Lettings 020 8819 0511  
172 King Street, Hammersmith, W6 0QU





Victorian conversion | Two bedrooms - One bathroom |  
 664 Sq' – 61.69 SqM | 22' South facing roof terrace |  
 EPC rating C | Brackenbury Village



hortonandgarton.co.uk  
 Sales 020 8819 0510  
 Lettings 020 8819 0511

172 King Street, Hammersmith, W6 0QU

**horton  
andgarton**

**BENBOW ROAD**

Gross Internal Area 722 sq. ft / 67.11 sq. m  
 CH = Ceiling Heights  
 For identification purposes only.  
 The Position and size of doors, windows, appliances  
 Bedroom and other features are approximate only.  
 For illustrative purposes only - not to scale