



- Five Bedroom Family Home
- Fully Detached
- Two En Suite Bathrooms
- Popular Village Of Black Notley
- Refitted Kitchen & Utility
- Garage & Off Road Parking
- Three Generous Reception Rooms
- Field Views To Front Aspect
- Beautifully Maintained Rear Garden
- Conservatory

**22 Osmond Close, Black Notley,
Braintree, Essex. CM77 8FH.**

** Guide Price £525,000 - £575,000 **

Michaels Property Consultants are pleased to present to the market Stamford House, a beautifully presented and well-established five-bedroom detached house with far-reaching field views, situated within the ever-popular village of Black Notley.



Property Details.

Entrance Hall



Cloakroom

Dining Room



11' 4" x 9' 5" (3.45m x 2.87m)

Kitchen/Breakfast Room



11' 8" x 11' 8" (3.56m x 3.56m)

Utility

8' 8" x 6' 2" (2.64m x 1.88m)

Lounge



19' 8" x 11' 2" (5.99m x 3.40m)

Conservatory



12' 7" x 10' 2" (3.84m x 3.10m)

Bedroom One



12' 3" x 10' 3" (3.73m x 3.12m)

Property Details.

En-Suite 1



11' 3" x 7' 5" (3.43m x 2.26m)

Bedroom Two

11' 3" x 9' 6" (3.43m x 2.90m)

En-Suite 2



7' 2" x 5' 9" (2.18m x 1.75m)

Bedroom Five

9' 8" x 5' 3" (2.95m x 1.60m)

Family Bathroom

8' 8" x 6' 8" (2.64m x 2.03m)

Second Floor Landing

Bedroom Three

12' 5" x 11' 4" (3.78m x 3.45m)

Bedroom Four

12' 3" x 9' 1" (3.73m x 2.77m)

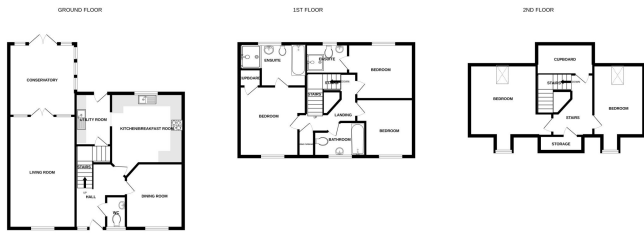
Rear Garden



Garage & Parking

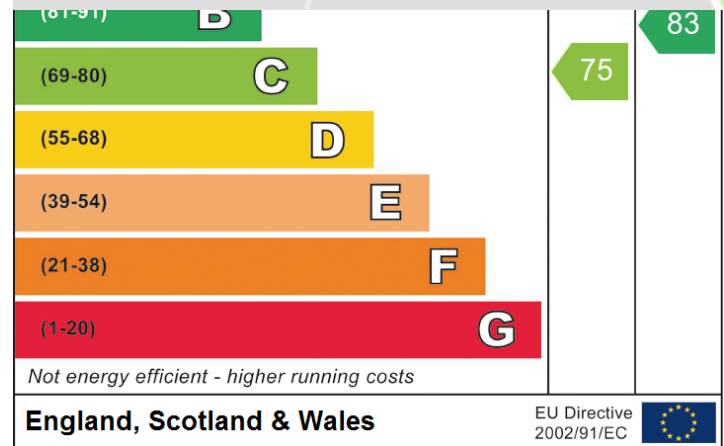
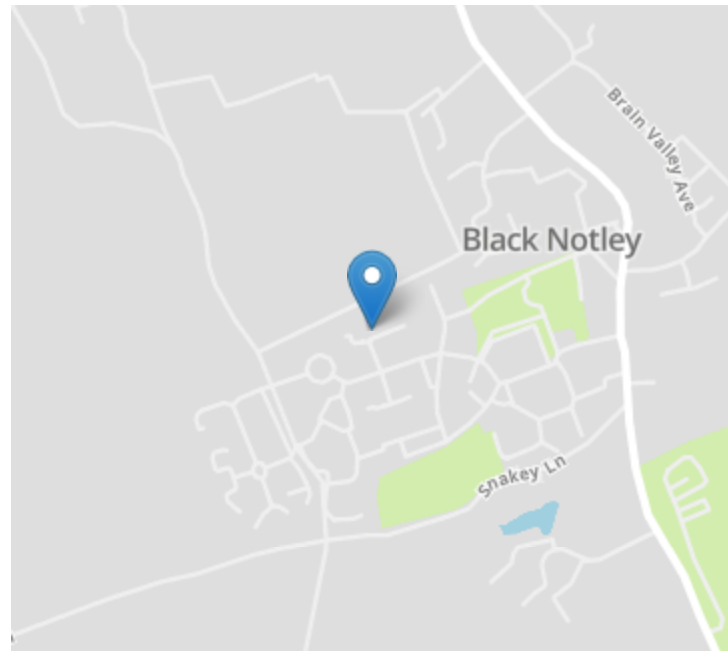
Property Details.

Floorplans



Michaelsons Property has been made to ensure the accuracy of the floorplans contained herein, measurements of areas, volumes, distances etc. are given as an approximate and are not intended to be relied upon for any other purpose. The services, systems and appliances shown hereon have not been tested and no guarantee is given for their operation or efficiency. See also www.michaelsons.co.uk

Location



We have not carried out a structural survey and the services, appliances and specific fittings have not been tested. All photographs, measurements, floor plans and distances referred to are given as a guide only and should not be relied upon for the purchase of carpets or any other fixtures or fittings. Gardens, roof terraces, balconies and communal gardens as well as tenure and lease details cannot have their accuracy guaranteed for intending purchasers. Lease details, service ground rent (where applicable) are given as a guide only and should be checked and confirmed by your solicitor prior to exchange of contracts.